

MACKENZIE REGIONAL WASTE MANAGEMENT COMMISSION

AGENDA

SEPTEMBER 06, 2008

Page

1. **CALL TO ORDER**
2. **ADOPTION OF AGENDA**
3. **DELEGATIONS**
 - 3.1 Doug Gramson / Northern Services

4. **REPORTS**
 - 4.1 Manager's Reports for May, June and July 2008

4-23

- 4.2 Financial Reports as at July 31, 2008

24-29

5. **ADOPTION OF MINUTES**
 - 5.1 Minutes of May 23, 2008 Regular Meeting

30-37

6. **BUSINESS ARISING FROM THE MINUTES**

Page	
	7. NEW BUSINESS
38-40	7.1 Policy 26-05 Appointment of the Secretary-Treasurer
41-42	7.2 Policy 24-05 Reserve and Trust Fund Accounts
43-44	7.3 Policy 51-06 Batteries
45-46	7.4 Policy 34-05 Tires
47-49	7.5 Invoice to Northern Services
	8. CORRESPONDENCE
50	8.1 Letter from Highway 43 East Waste Commission
51-53	8.2 RCA Conference 2008
	9. NOTICE OF MOTION
	9.1 2009 Budget
	10. NEXT MEETING
	10.1 October 4, 2008

Page

11. IN-CAMERA ITEMS

54

11.1 Town of High Level Invoice

12. ADJOURNMENT

MACKENZIE REGIONAL WASTE MANAGEMENT COMMISSION
REQUEST FOR DECISION

Issue:
Monthly Operating Reports for May, June, and July 2008

Recommendation:
Reviewed by Manager and accept for information.

Comments:

Date: August 25, 2008

Submitted By: Pat Sliworsky, Manager

Reviewed By:

Manager's Report

- The waste in 2008 is lower as compared to 2007. 1000 metric tonnes less was placed in the pit in 2007. In looking at the report there was a difference of -800 Tonnes of commercial/industrial from Mackenzie County and -100 Tonnes of commercial/industrial from High Level.
- 14 loads of tires (over 230 Tonnes) have been taken out of the Landfill over the last 2 years.
- The office building is now setup at the Landfill.
- We are now recycling milk cartons and jugs.
- We have updated the changes (Effective July 1/08) to the *Alberta Public Service Subsistence, Travel and Moving Expenses Regulation*.

They include the following:

	<u>Old Price</u>	<u>New Price</u>
- breakfast	\$8.05	\$9.20
- lunch	\$10.20	\$11.60
- dinner	\$18.25	\$20.75
- daily allowance	\$6.45	\$7.35
- accommodation	\$17.70	\$20.15
- mileage	\$0.43/km	\$0.505/km

- We are scheduled to partake in the Getting to Know You Night in La Crete on September 12, the Town of High Level Trade Show on September 19 & 20, and the Getting to Know You Night in Rainbow Lake in October.
- I attended a meeting in Edmonton on August 27th regarding the Standards and Guidelines for Landfills in Alberta.
- I will be attending a Conference in Valleyview on September 10th-12th. One of the tours at this conference is to the Transfer Station which now has the new "Transtor" bin system to help cut costs to hauling of waste. Another item that I will be looking into is the proposal that Northern CARE is putting together for all members regarding metal recycling. In talking to them to date they mentioned that they should at least be able to recycle our metal at zero cost in the future. 2008 Budget is \$10,000 for metal recycling costs.
- A notification for composting has been sent in to Alberta Environment for them to review in order to allow us to start operation.
- We are still looking for a contractor to setup our electric fence. Margo Supplies are the only one that has contacted us in reply to the RFP's that were sent out and they still haven't got back to us as to how much it will cost.
- Our web site is up and running. www.mrwmc.com
- Next meeting to be about the 2009 Budget. Request for items that the Board would like to see included in the next budget. Does the Board wish to send out RFP's for an auditor?

***Mackenzie Regional Waste Management Commission
Class IIB Landfill***

Monthly Operations Report and Summary

Month of May 2008

Reporting To:

Alberta Environmental and Protection

Attention: Mr. George Neurohr

10320 - 99th Street

Grande Prairie, Alberta

T8V 6J4

Phone: 780-538-5351

Mackenzie Regional Waste Management Commission
Monthly Operations Summary
Month of May 2008

1: Supervision and Operating Personnel

<u>Landfill Manager</u>	<u>Pat Sliworsky</u>	<u>MRWMC</u>
<u>Scale Operations</u>	<u>Erica Stewart</u>	<u>MRWMC</u>
<u>Landfill Operator</u>	<u>Neville Pomeroy</u>	<u>MRWMC</u>
<u>Equipment Operator</u>	<u>Hamid Achour</u>	<u>MRWMC</u>
<u>Administrative/Financial Assistant</u>	<u>Kathy Bancarz</u>	<u>MRWMC</u>
<u>Summer Student</u>	<u>Danyelle Davis</u>	<u>MRWMC</u>

2: Load Inspections Inspections are conducted on a random basis throughout the month

3: Daily Activities Please find attached the Summary of Daily Activities and Information
Daily journal filed at the landfill office;
Scale cleaning
Sorting and hauling recycled metals and white goods

4: Operational Problems
Ravens & Seagulls
Customers placing waste at incorrect locations
Customers not covering & securing loads

5: Public Complaints

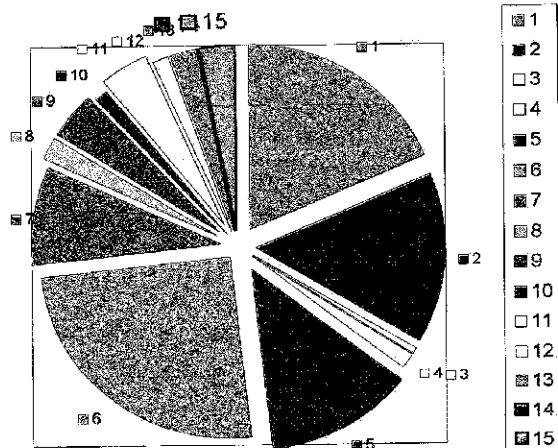
6: Special Activities Litter fences moved to appropriate locations
White goods being hauled off of the site
Metal being sorted and hauled off of the site

Mackenzie Regional Waste Management Commission
Monthly Reporting Summary
Month of May 2008

Monitoring Parameters	Frequency	Method	Sampling Location	Reporting Method	Attachment of Action
Weight & type of waste received	Daily, per load	Landfill Weigh Scale	Landfill Entrance	Scale Record per load	Attached Waste Received Report
Weight & type of waste removed	Daily, per load	Landfill Weigh Scale	Landfill Entrance	Scale Record per load	Attachment #2 Load Summary
Hazardous waste detection	Daily, per load	Observation and load inspection	Landfill & Entrance and disposal storage sites	Operating Record	None observed this reporting
Location of waste deposited	Daily	Per survey record	Active portion of cell	Operating Record	cell #3B
Cover Thickness	Daily	Observation	Active portion of cell	Operating Record	None, using snow as daily cover
Working Face Width	Daily	Observation	Active portion of cell	Operating Record	75ft working face, monitored
Leachate level monitoring	Per operation plan	Measurement	Leachate storage pond or cell	Operating Record	Annual reporting
Leachate analysis	Per operation plan	Grab Sample	Leachate storage pond or cell	Operating Record	none
Volume of leachate removed	As removed	Measurement	Leachate storage pond or cell	Operating Record	none
Surface Monitoring	Surface water monitoring plan	Observation	Active portion of cell	Operating Record	Daily
Intermediate cover	When cover applied	Observation	Completion of cell	Operating Record	none
Final cover	Cell Closure	Survey cores and test pits	Completion of cell	Survey Record	none
Groundwater monitoring	Per GWP as amended	Measurement and grab sample	Groundwater monitoring wells	Operating Record	Annual reporting

Mackenzie Regional Landfill

Waste Received
May 2008

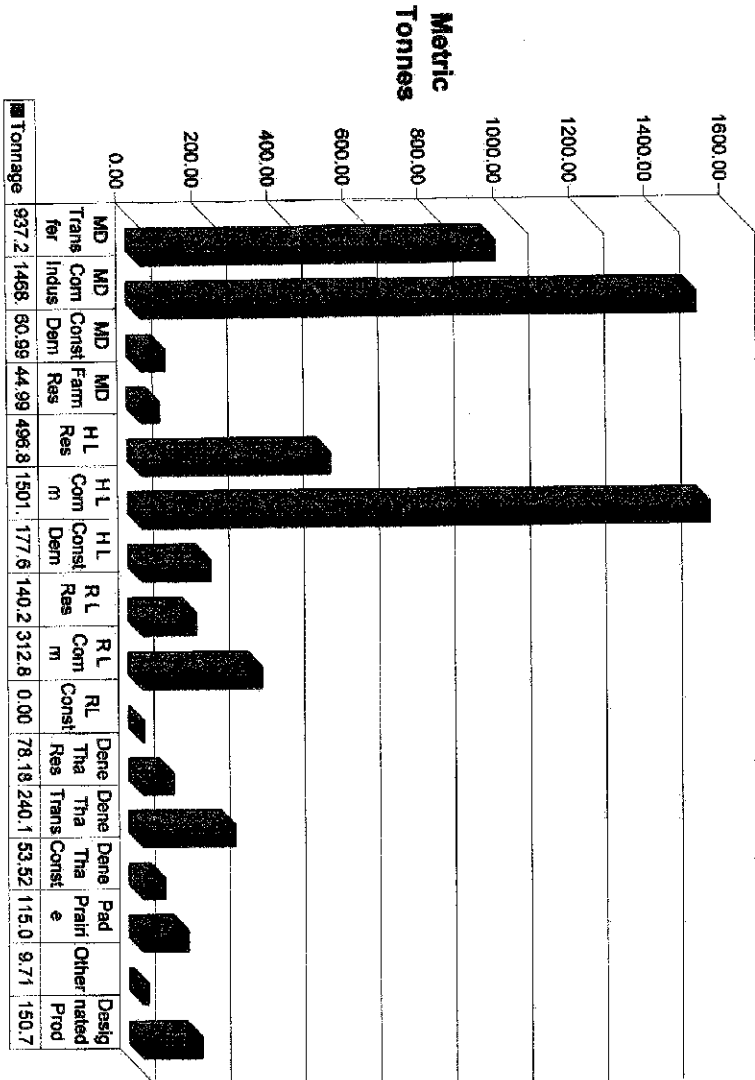


Waste Volume Legend	Metric Tonne	% of Total	Legend
MD #23 Transfer Stations	333.26	18%	1
MD #23 Commercial - Industrial	274.75	15%	2
MD #23 Construction - Demolition	7.76	0%	3
MD #23 Farm Residential	27.38	2%	4
H L Residential	228.18	13%	5
H L Commercial-Industrial	448.75	25%	6
H L Construction-Demolition	155.11	9%	7
R L Residential	35.39	2%	8
R L Commercial-Industrial	75.12	4%	9
Dene Tha Residential	22.13	1%	10
Dene Tha Transfer	74.99	4%	11
Dene Tha Const./Demo.	24.55	1%	12
Paddle Transfer	39.78	2%	13
Non-Members	0.00	0%	14
Products to Designated Areas	55.06	3%	15
Total	1802.21	100%	

Items not included in chart

Soil with Hydrocarbons	0.00
DIRT	165.00

Landfill Accumulated Tonnage to May 31, 2008



**Mackenzie Regional Waste Management Commission
Summary of Waste Received in 2008 - Sorted by Area - per Metric Tonne**

	January	February	March	April	May	June	July	August	September	October	November	December	Total
Mackenzie County													
Transfer Station	121.36	130.26	141.30	210.87	333.26								637.77
Commercial - Industrial	239.33	323.87	370.24	250.64	274.75								1,468.84
Construction - Demolition	0.00	0.00	18.24	36.88	7.78								80.89
Farm Residential	3.40	4.74	3.67	3.80	27.38								44.99
Total Mackenzie County	366.09	469.06	531.46	602.30	643.19	0.00	0.00	0.00	0.00	0.00	0.00	0.00	2,512.06
Town of High Level													
Residential	69.58	67.05	64.00	75.04	228.16								486.89
Commercial - Industrial	248.72	265.87	270.80	266.52	418.75								1,501.78
Construction - Demolition	7.89	0.77	11.32	1.05	155.11								177.82
Total High Level	326.19	333.69	346.12	342.71	802.02	0.00	0.00	0.00	0.00	0.00	0.00	0.00	2,168.51
Town of Rainbow Lake													
Residential	24.42	23.04	33.85	23.58	35.30								140.29
Commercial - Industrial	68.63	86.49	53.54	58.11	75.12								312.88
Construction - Demolition	0.00	0.00	0.00	0.00	0.00								0.00
Total Rainbow Lake	93.05	109.53	87.39	81.69	110.42	0.00	0.00	0.00	0.00	0.00	0.00	0.00	453.17
Cane The First Nations													
Residential	11.80	16.78	12.49	14.97	22.78								78.78
Transfer Station	38.17	52.81	42.08	34.01	74.39								240.70
Construction - Demolition	8.29	8.33	4.65	9.70	24.55								55.52
Total Cane The	58.26	78.03	59.22	58.68	121.87	0.00	0.00	0.00	0.00	0.00	0.00	0.00	371.80
Paddle Prairie Waste Settlement													
Transfer Station	17.24	17.24	21.21	18.03	38.78								115.00
Total Paddle Prairie	17.24	17.24	21.21	18.03	38.78	0.00	0.00	0.00	0.00	0.00	0.00	0.00	115.00
Others													
Non-members	0.00	0.00	8.71	0.00	0.00								8.71
Total Others	0.00	0.00	8.71	0.00	0.00								8.71
Total Waste Deposited in Pit	884.94	965.66	1,085.32	1,014.92	4,747.15	0.00	0.00	0.00	0.00	0.00	0.00	0.00	5,837.89
Products to Designated Area													
E-waste, electronics	0.31	0.55	0.77	0.64	1.91								4.58
Liquid Sludge	14.63	12.76	10.02	18.63	2.62								58.78
Wooden Burnable	2.52	2.00	4.17	24.34									37.71
Plastic Containers	0.60	0.00	0.00	0.00	0.00								0.00
Batteries	1.32	0.07	1.09	0.28	3.00								5.74
Tires	1.24	0.00	3.51	3.33	3.22								11.30
White Goods	1.80	0.98	1.75	0.33	0.65								20.37
Car Bodies	0.00	0.00	0.00	0.00	0.00								0.00
Assorted Metal	0.51	0.17	0.28	0.74	10.24								11.92
Oil/Fire/Cell Containers	0.08	0.00	0.00	0.01	0.27								0.34
Asbestos	0.00	0.00	0.00	0.00	0.00								0.00
Animal-haulers responsible for	0	0.00	0	0	0.01								0.06
Total to Designated Areas	22.99	16.99	22.08	34.61	95.06	0.00	0.00	0.00	0.00	0.00	0.00	0.00	180.72
Products Diverted for Recycling													
2007 Monthly Total by Weight	977.93	982.24	1,077.40	1,049.93	1,802.21	0.00	0.00	0.00	0.00	0.00	0.00	0.00	5,788.70
2008 Monthly Total by Weight	1,030.12	976.76	1,195.49	1,322.70	1,901.95	1,748.86	1,434.49	1,470.43	1,328.82	1,548.28	1,340.70	893.97	16,143.90
2008 Monthly Total by Weight	1,144.29	1,121.87	1,323.88	1,379.77	1,956.87	1,751.26	1,481.48	1,735.83	2,108.09	1,965.05	1,018.01	1,342.58	19,789.27
Soil with Hydrocarbons	0.00	0.00	0.00	0.00	0.00	0.00	0.00	0.00	0.00	0.00	0.00	0.00	0.00
DIRT	0	0	88.59	8.11	165.00	0.00	0.00	0.00	0.00	0.00	0.00	0.00	271.70

***Mackenzie Regional Waste Management Commission
Class IIB Landfill***

Monthly Operations Report and Summary

Month of June 2008

Reporting To:

Alberta Environmental and Protection

Attention: Mr. George Neurohr

10320 - 99th Street

Grande Prairie, Alberta

T8V 6J4

Phone: 780-538-5351

Mackenzie Regional Waste Management Commission
Monthly Operations Summary
Month of June 2008

1: Supervision and Operating Personnel

<u>Landfill Manager</u>	<u>Pat Sliworsky</u>	<u>MRWMC</u>
<u>Scale Operations</u>	<u>Erica Stewart</u>	<u>MRWMC</u>
<u>Landfill Operator</u>	<u>Neville Pomeroy</u>	<u>MRWMC</u>
<u>Equipment Operator</u>	<u>Hamid Achour</u>	<u>MRWMC</u>
<u>Administrative/Financial Assistant</u>	<u>Kathy Bancarz</u>	<u>MRWMC</u>
<u>Summer Student</u>	<u>Danyelle Davis</u>	<u>MRWMC</u>

2: Load Inspections Inspections are conducted on a random basis throughout the month

3: Daily Activities Please find attached the Summary of Daily Activities and Information
Daily journal filed at the landfill office;
Scale cleaning
Sorting and hauling recycled metals and white goods

4: Operational Problems
Ravens & Seagulls
Customers placing waste at incorrect locations
Customers not covering & securing loads

5: Public Complaints

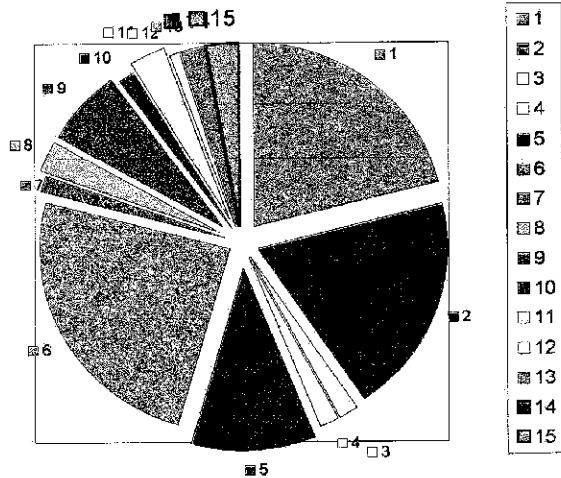
6: Special Activities Litter fences moved to appropriate locations
White goods being hauled off of the site
Metal being sorted and hauled off of the site

Mackenzie Regional Waste Management Commission
Montly Reporting Summary
Month of June 2008

Monitoring Parameters	Frequency	Method	Sampling Location	Reporting Method	Attachment of Action
Weight & type of waste received	Daily, per load	Landfill Weigh Scale	Landfill Entrance	Scale Record per load	Attached Waste Received Report
Weight & type of waste removed	Daily, per load	Landfill Weigh Scale	Landfill Entrance	Scale Record per load	Attachment #2 Load Summary
Hazardous waste detection	Daily, per load	Observation and load inspection	Landfill & Entrance and disposal storage sites	Operating Record	None observed this reporting
Location of waste deposited	Daily	Per survey record	Active portion of cell	Operating Record	cell #3A
Cover Thickness	Daily	Observation	Active portion of cell	Operating Record	None, using snow as daily cover
Working Face Width	Daily	Observation	Active portion of cell	Operating Record	75ft working face, monitored
Leachate level monitoring	Per operation plan	Measurement	Leachate storage pond or cell	Operating Record	Annual reporting
Leachate analysis	Per operation plan	Grab Sample	Leachate storage pond or cell	Operating Record	none
Volume of leachate removed	As removed	Measurement	Leachate storage pond or cell	Operating Record	none
Surface Monitoring	Surface water monitoring plan	Observation	Active portion of cell	Operating Record	Daily
Intermidlate cover	When cover applied	Observation	Completeion of cell	Operating Record	none
Final cover	Cell Closure	Survey cores and test pits	Completion of cell	Survey Record	none
Groundwater monitoring	Per GWP as amended	Measurement and grab sample	Groundwater monitoring wells	Operating Record	Annual reporting

Mackenzie Regional Landfill

**Waste Received
June 2008**



Waste Volume Legend	Metric Tonne	% of Total	Legend
MD #23 Transfer Stations	291.80	21%	1
MD #23 Commercial - Industrial	268.29	19%	2
MD #23 Construction - Demolition	23.01	2%	3
MD #23 Farm Residential	23.40	2%	4
H L Residential	147.56	11%	5
H L Commercial-Industrial	339.65	25%	6
H L Construction-Demolition	20.03	1%	7
R L Residential	38.40	3%	8
R L Commercial-Industrial	93.35	7%	9
Dene Tha Residential	17.25	1%	10
Dene Tha Transfer	44.56	3%	11
Dene Tha Const./Demo.	10.01	1%	12
Paddle Transfer	26.87	2%	13
Non-Members	0.00	0%	14
Products to Designated Areas	39.22	3%	15
Total	1383.40	100%	

Items not included in chart

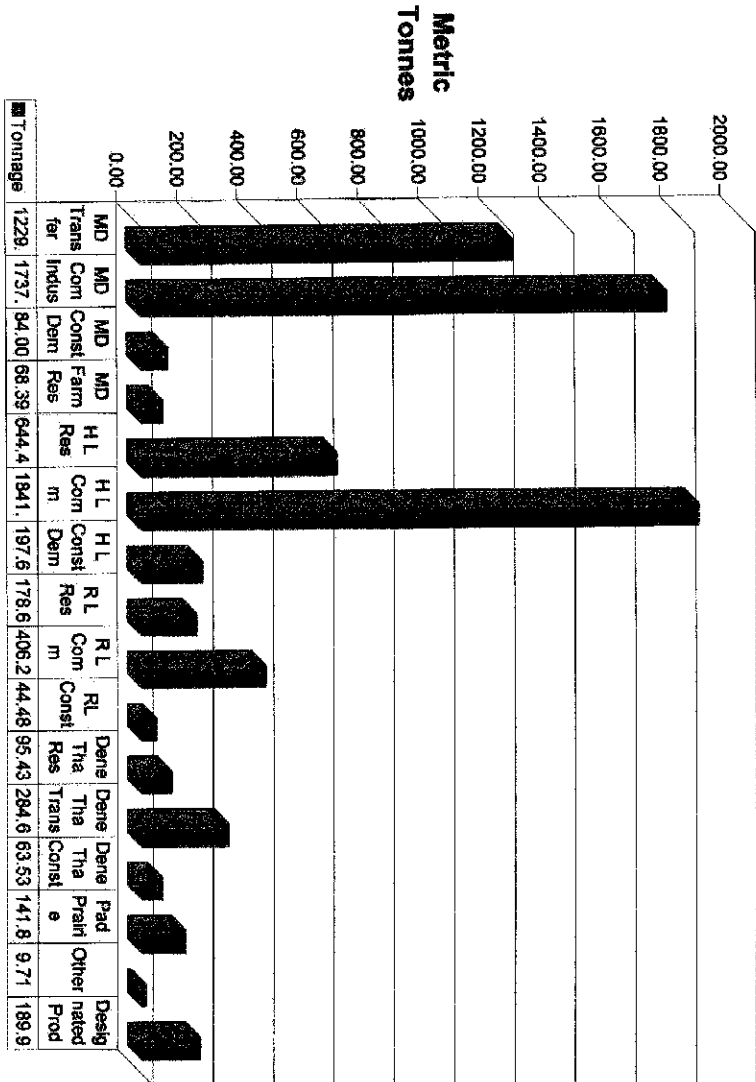
Soil with Hydrocarbons

1873.24

DIRT

476.54

Landfill Accumulated Tonnage to June 30, 2008



**Mackenzie Regional Waste Management Commission
Summary of Waste Received in 2008 - Sorted by Area - per Metric Tonne**

	January	February	March	April	May	June	July	August	September	October	November	December	Total
Mackenzie County													
Transfer Station	127.36	130.46	141.30	210.67	353.26	291.60							1229.04
Commercial - Industrial	239.53	333.67	370.24	250.64	274.75	268.29							1737.13
Construction - Demolition	0.00	0.00	16.24	36.98	7.76	23.01							84.00
Farm Residential	5.40	4.74	3.67	3.80	27.39	23.40							68.39
Total Mackenzie County	368.09	469.05	531.45	502.30	643.15	606.60	0.00	0.00	0.00	0.00	0.00	0.00	3,118.56
Town of High Level													
Residential	69.56	60.09	64.00	75.04	228.19	147.56							642.44
Commercial - Industrial	246.72	265.97	270.60	289.52	448.75	336.55							1841.41
Construction - Demolition	2.50	0.77	0.71	7.86	15.11	20.03							197.65
Total High Level	300.88	326.82	345.32	392.22	692.04	507.24	0.00	0.00	0.00	0.00	0.00	0.00	2,684.50
Town of Rainbow Lake													
Residential	24.42	23.04	33.86	23.56	35.33	35.40							178.69
Commercial - Industrial	69.63	56.46	58.64	68.11	75.12	93.35							406.21
Construction - Demolition	0.00	0.00	0.00	0.00	0.00	44.48							44.48
Total Rainbow Lake	94.05	79.50	92.40	91.67	110.45	173.23	0.00	0.00	0.00	0.00	0.00	0.00	629.38
Dane the First Nations													
Residential	11.93	15.79	12.26	15.67	22.13	17.25							95.43
Transfer Station	39.11	52.97	42.09	34.01	74.99	44.52							284.67
Construction - Demolition	0.29	6.33	6.56	8.70	24.59	10.01							63.53
Total Dane Fns	51.33	75.09	60.91	58.38	121.71	71.82	0.00	0.00	0.00	0.00	0.00	0.00	443.63
Pacific Prairie Waste Settlement													
Transfer Station	17.74	17.24	21.21	16.03	39.78	28.67							141.67
Total Pacific Prairie	17.74	17.24	21.21	16.03	39.78	28.67	0.00	0.00	0.00	0.00	0.00	0.00	141.67
Others													
Non-members	0.00	0.00	9.71	0.00	0.00	0.00							9.71
Other Charges	0.00	0.00	9.71	0.00	0.00	0.00							9.71
Total Waste Deposited In Pit	64.94	68.66	1,083.42	1,014.82	1,747.15	1,386.69	0.00	0.00	0.00	0.00	0.00	0.00	7,026.64
Products to Designated Area													
Evaporators electronics	0.51	0.56	0.77	0.94	1.61	0.13							4.71
Liquid Slump	14.63	12.78	10.02	16.83	2.52	11.49							70.25
Wooden Burnable	2.52	2.00	4.88	4.17	24.34	19.00							56.71
Pesticide Containers	0.00	0.00	0.00	0.00	0.00	0.22							0.22
Batteries	1.32	0.07	1.09	0.28	3.00	0.00							6.74
Tires	1.24	0.00	3.51	3.22	3.36	14.68							28.21
White Goods	1.80	0.88	1.75	6.33	3.65	2.60							14.89
Household Hazardous Wastes	0.00	0.00	0.00	0.00	0.00	0.03							0.03
Asbestos Metal	0.31	0.17	0.28	0.74	10.24	1.83							12.59
Oil Filter/Oil Containers	0.06	0.00	0.00	0.01	0.27	0.21							0.55
Animal/hair/s responsible for	0.00	0.00	0.00	0.00	0.00	0.00							0.00
Asbestos	0.00	0.06	0.00	0.00	0.01	0.00							0.08
Total to Designated Areas	22.39	16.56	22.08	34.61	64.06	39.22	0.00	0.00	0.00	0.00	0.00	0.00	189.94
Products Diverted for Recycle													
2008 Monthly Total by Weight	877.33	882.24	1,017.40	1,046.58	1,802.21	1,427.88							62.67
2007 Monthly Total by Weight	1,030.12	976.76	1,105.49	1,222.70	1,907.85	1,746.93							7,216.86
2006 Monthly Total by Weight	1,144.29	1,121.87	1,533.80	1,379.77	1,653.87	1,751.28							16,438.27
Soil with Hydrocarbons	0.00	0.00	0.00	0.00	0.00	0.00							1,873.24
DIRT	0	0	88.58	8.11	168.00	476.54							748.24

***Mackenzie Regional Waste Management Commission
Class IIB Landfill***

Monthly Operations Report and Summary

Month of July 2008

Reporting To:

Alberta Environmental and Protection

Attention: Mr. George Neurohr

10320 - 99th Street

Grande Prairie, Alberta

T8V 6J4

Phone: 780-538-5351

Mackenzie Regional Waste Management Commission
Monthly Operations Summary
Month of July 2008

1: Supervision and Operating Personnel

<u>Landfill Manager</u>	<u>Pat Sliworsky</u>	<u>MRWMC</u>
<u>Scale Operations</u>	<u>Erica Deveaux</u>	<u>MRWMC</u>
<u>Landfill Operator</u>	<u>Neville Pomeroy</u>	<u>MRWMC</u>
<u>Equipment Operator</u>	<u>Hamid Achour</u>	<u>MRWMC</u>
<u>Administrative/Financial Assistant</u>	<u>Kathy Bancarz</u>	<u>MRWMC</u>
<u>Summer Student</u>	<u>Danyelle Davis</u>	<u>MRWMC</u>

2: Load Inspections Inspections are conducted on a random basis throughout the month

3: Daily Activities Please find attached the Summary of Daily Activities and Information
Daily journal filed at the landfill office;
Scale cleaning
Sorting and hauling recycled metals and white goods

4: Operational Problems
Ravens & Seagulls
Customers placing waste at incorrect locations
Customers not covering & securing loads

5: Public Complaints

6: Special Activities Litter fences moved to appropriate locations
White goods being hauled off of the site
Metal being sorted and hauled off of the site

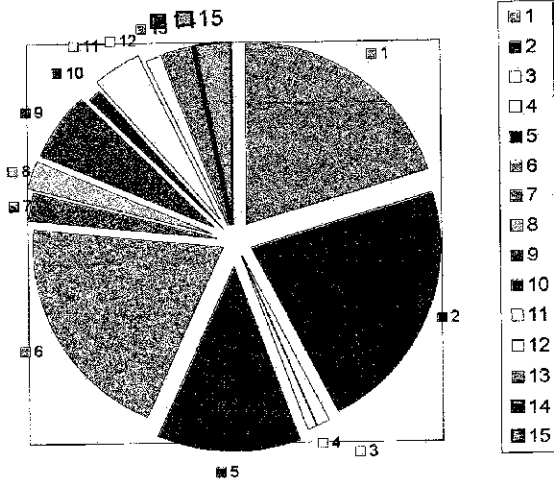
|

Mackenzie Regional Waste Management Commission
Monthly Reporting Summary
Month of July 2008

Monitoring Parameters	Frequency	Method	Sampling Location	Reporting Method	Attachment of Action
Weight & type of waste received	Daily, per load	Landfill Weigh Scale	Landfill Entrance	Scale Record per load	Attached Waste Received Report
Weight & type of waste removed	Daily, per load	Landfill Weigh Scale	Landfill Entrance	Scale Record per load	Attachment #2 Load Summary
Hazardous waste detection	Daily, per load	Observation and load inspection	Landfill & Entrance and disposal storage sites	Operating Record	None observed this reporting
Location of waste deposited	Daily	Per survey record	Active portion of cell	Operating Record	cell #3A
Cover Thickness	Daily	Observation	Active portion of cell	Operating Record	None, using dirt as daily cover
Working Face Width	Daily	Observation	Active portion of cell	Operating Record	75ft working face, monitored
Leachate level monitoring	Per operation plan	Measurement	Leachate storage pond or cell	Operating Record	Annual reporting
Leachate analysis	Per operation plan	Grab Sample	Leachate storage pond or cell	Operating Record	none
Volume of leachate removed	As removed	Measurement	Leachate storage pond or cell	Operating Record	none
Surface Monitoring	Surface water monitoring plan	Observation	Active portion of cell	Operating Record	Daily
Intermediate cover	When cover applied	Observation	Completion of cell	Operating Record	none
Final cover	Cell Closure	Survey cores and test pits	Completion of cell	Survey Record	none
Groundwater monitoring	Per GWP as amended	Measurement and grab sample	Groundwater monitoring wells	Operating Record	Annual reporting

Mackenzie Regional Landfill

Waste Received
July 2008



Waste Volume Legend	Metric Tonne	% of Total	Legend
MD #23 Transfer Stations	266.88	20%	1
MD #23 Commercial - Industrial	290.03	22%	2
MD #23 Construction - Demolition	14.58	1%	3
MD #23 Farm Residential	10.71	1%	4
H L Residential	159.96	12%	5
H L Commercial-Industrial	262.11	20%	6
H L Construction-Demolition	33.22	3%	7
R L Residential	33.91	3%	8
R L Commercial-Industrial	80.21	6%	9
Dene Tha Residential	16.32	1%	10
Dene Tha Transfer	51.16	4%	11
Dene Tha Const./Demo.	20.58	2%	12
Paddle Transfer	33.25	3%	13
Non-Members	0.00	0%	14
Products to Designated Areas	39.01	3%	15
Total	1311.93	100%	

Items not included in chart

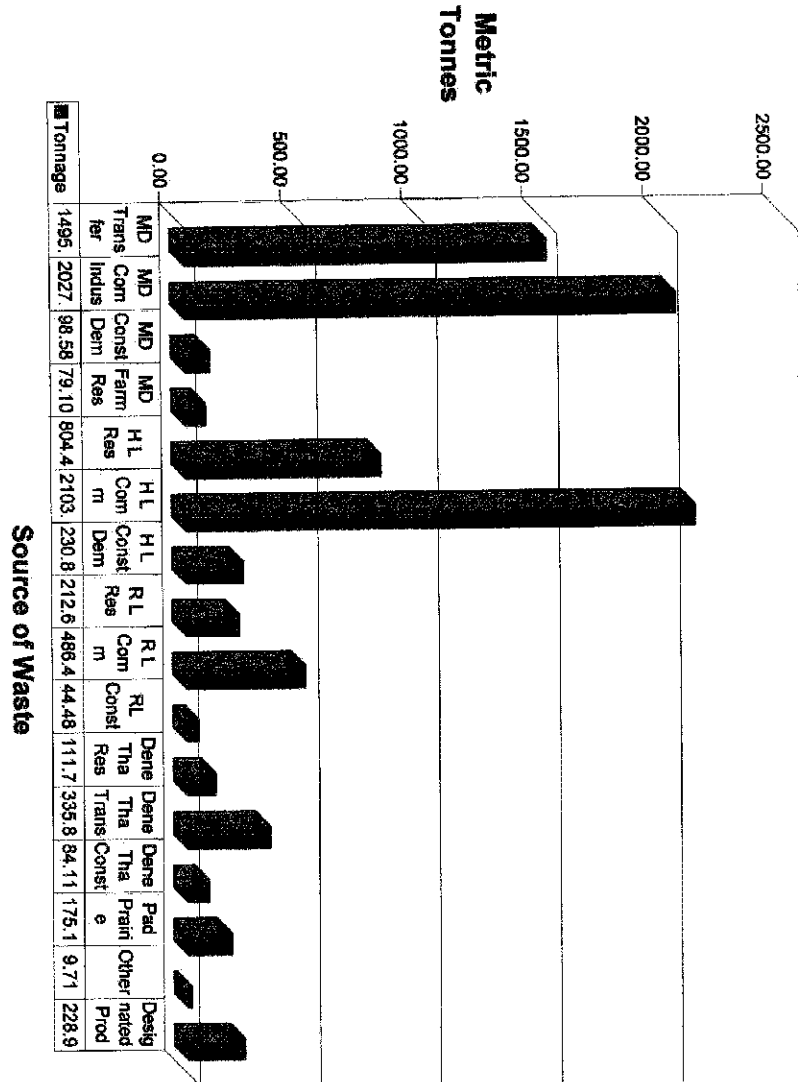
Soil with Hydrocarbons

751.20

DIRT

53.66

Landfill Accumulated Tonnage to July 31, 2008



**Mackenzie Regional Waste Management Commission
Summary of Waste Received in 2008 - Sorted by Area - per Metric Tonne**

	January	February	March	April	May	June	July	August	September	October	November	December	Total
Mackenzie County													
Transfer Stations	121.38	130.45	141.30	210.87	333.28	291.80	269.93						1465.82
Commercial - Industrial	239.33	333.67	370.24	250.84	274.75	263.23	250.03						2027.18
Construction - Demolition	0.00	0.00	16.24	36.98	7.78	23.01	14.56						86.58
Farm Residential	3.40	4.74	3.67	3.80	27.36	23.40	10.71						79.10
Total Mackenzie County	364.09	469.08	537.45	502.30	643.16	605.40	582.20	0.00	0.00	0.00	0.00	0.00	3,700.78
Town of High Level													
Residential	63.53	60.63	64.00	75.04	226.16	147.58	158.95						604.40
Commercial - Industrial	248.12	283.97	279.83	289.52	448.75	358.25	282.11						2,033.82
Construction - Demolition	2.36	0.77	1.32	7.88	153.11	20.03	13.22						230.87
Total High Level	320.88	324.82	346.32	392.22	692.04	507.24	465.29	0.00	0.00	0.00	0.00	0.00	3,139.79
Town of Rainbow Lake													
Residential	24.22	23.04	33.83	23.58	35.99	38.20	33.91						212.80
Commercial - Industrial	90.63	50.48	53.54	59.11	78.12	83.35	80.21						483.42
Construction - Demolition	0.00	0.00	0.00	0.00	0.00	44.48	0.00						44.48
Total Rainbow Lake	84.05	79.50	87.40	81.69	119.51	178.23	114.12	0.00	0.00	0.00	0.00	0.00	746.50
Dane The First Nations													
Residential	11.80	13.78	12.48	15.97	22.73	17.23	18.32						113.75
Transfer Station	38.11	52.91	42.08	34.01	74.99	44.56	61.18						335.82
Construction - Demolition	8.28	6.33	4.65	9.70	24.55	10.01	20.58						84.11
Total Dane First	58.20	75.03	56.22	59.68	121.87	71.82	88.06	0.00	0.00	0.00	0.00	0.00	331.69
Paddle Prairie Mills Settlement													
Transfer Station	17.74	17.24	21.21	18.05	38.78	26.87	33.25						135.72
Total Paddle Prairie	17.74	17.24	21.21	18.05	38.78	26.87	33.25	0.00	0.00	0.00	0.00	0.00	135.72
Others													
Non-Members	0.00	0.00	8.74	0.00	0.00	0.00	0.00						8.74
Total Chairs	0.00	0.00	8.74	0.00	0.00	0.00	0.00						8.74
Total Waste Deposited in Pit	854.94	883.66	1,035.32	1,014.92	1,741.15	1,389.69	1,272.92	0.00	0.00	0.00	0.00	0.00	8,299.87
Products to Designated Area													
E-waste electronics	0.31	0.55	0.77	0.34	1.81	0.73	1.36						6.07
Liquid Slump	14.93	12.78	10.02	18.83	2.52	11.49	4.21						74.40
Wooden Burnable	2.52	2.00	4.68	4.17	24.34	19.00	18.74						73.46
Ferrous Containers	0.00	0.00	0.00	0.00	0.00	0.22	0.00						0.22
Non-Ferrous Containers	1.32	0.97	1.09	0.26	3.00	0.00	1.48						7.20
Batteries	1.24	0.00	3.91	3.32	3.22	3.36	4.19						22.66
Tires	1.80	0.89	1.78	8.33	8.65	2.90	2.79						28.00
White Goods	0.00	0.00	0.00	0.00	0.00	0.00	0.00						0.00
Household Hazardous Waste	0.51	0.17	0.23	0.74	10.24	1.88	4.21						18.01
Assorted Metals	0.03	0.00	0.00	0.01	0.27	0.21	0.00						0.53
Oil Filter/Oil Containers	0.00	0.00	0.00	0.00	0.00	0.00	0.00						0.00
Asbestos	0.00	0.00	0.00	0.00	0.00	0.00	0.00						0.00
Animal/halters responsible for	0.00	0.00	0.00	0.00	0.00	0.00	0.00						0.00
Total to Designated Areas	22.39	18.88	22.28	34.81	65.06	39.01	39.01	0.00	0.00	0.00	0.00	0.00	228.95
Products Diverted for Recycle													
2006 Monthly Total by Weight	877.33	992.24	1,077.40	1,048.53	1,807.85	1,427.88	1,311.93						8,528.92
2007 Monthly Total by Weight	1,030.12	976.76	1,185.48	1,222.70	1,907.85	1,748.65	1,434.48						16,143.90
2008 Monthly Total by Weight	1,144.29	1,121.87	1,523.88	1,375.77	1,956.67	1,751.26	1,481.43						14,488.27
Soil with Hydrocarbons	0.00	0.00	0.00	0.00	0.00	0.00	0.00						2,624.44
DIRT	0	0	88.59	8.11	165.00	476.54	53.66						801.90

MACKENZIE REGIONAL WASTE MANAGEMENT COMMISSION
REQUEST FOR DECISION

Issue:
Financial Report

Recommendation:

Adoption of the Financial Report.

Comments:

Date: August 25, 2008

Submitted By: Pat Sliworsky, Manager

Reviewed By:

Mackenzie Regional Waste Management Commission
Balance Sheet
July 31, 2008

ASSETS		
Current Assets		
Chequing Account	136,920.52	
Petty Cash	100.00	
Undeposited Funds	0.00	
Safety Program Funds	0.00	
Total Cash		137,020.52
Accounts Receivable	147,801.10	
Accounts Receivable - Other	0.00	
Allowance For Doubtful Accounts	(850.00)	
GST Rebate	4,175.69	
Accrued Return on Investments	0.00	
Security Deposits	0.00	
Total Receivables		151,126.79
Prepaid Insurance		1,811.00
Prepaid Land Lease		698.50
Prepaid Membership Fees		150.38
Prepaid Legal Fees		56.25
Pre-Paid Advertising		402.04
Prepaid Rental Fees		150.00
Short Term Investments		300,000.00
Total Current Assets		591,415.48
Long Term Investments		
Term Deposit Investments		494,379.44
Total Long Term Investments		494,379.44
Capital Assets		
Building Assets	259,331.49	
Accumulated Amortization	(126,596.53)	
Net - Building Assets		132,734.96
Engineering Structures	2,236,671.28	
Accumulated Amortization	(1,431,299.80)	
Net - Engineering Structures		805,371.48
Furniture and Equipment	72,019.96	
Accumulated Amortization	(52,055.45)	
Net - Furniture and Equipment		19,964.51
Machinery and Equipment	594,329.76	
Accumulated Amortization	(41,673.51)	
Net - Machinery and Equipment		552,656.25
Total Capital Assets		1,510,727.20
TOTAL ASSETS		2,596,522.12
LIABILITIES		
Current Liabilities		
Accounts Payable		31,404.88
Accounts Payable - Other		270.26
Credit Card Payable		2,188.02
Staledated Cheques		(53.50)
Current Portion of Long Term Debt		15,684.98

Accrued Interest on Long Term Debt		0.00
Accrued Audit Fees		0.00
Accrued Bin Rental		3,300.00
Accrued Equipment Repair Expense		6,617.56
Accrued Payroll		6,431.16
Accrued Utilities		229.19
EI Payable	0.00	
CPP Payable	0.00	
Income Tax Payable	0.00	
Total Receiver General		0.00
AD&D	0.00	
Dependent Life	0.00	
Dental	0.00	
Extended Health	0.00	
Group Life	0.00	
Long Term Disability	0.00	
Short Term Disability	0.00	
Total Premiums Payable		0.00
LAPP (ER) Payable	0.00	
LAPP (EE) Payable	0.00	
Total Pension Payable		0.00
Workers Compensation Payable		0.00
Vacation Pay Payable		236.52
GST Charged on Sales	3,403.14	
GST Paid on Purchases	(1,380.54)	
GST Adjustments	0.00	
ITC Adjustments	0.00	
GST Owing		2,022.60
Total Current Liabilities		68,331.67
Long Term Liabilities		
Debenture Payable		350,975.00
Deferred Contributions - Cap. Asset		64,870.75
Landfill Reclamation		1,664,186.21
Total Long Term Liabilities		2,080,031.96
TOTAL LIABILITIES		2,148,363.63
EQUITY		
Equity		
Equity in Capital Assets		697,369.76
General Landfill Reserve		230,909.12
Total Equity		928,278.88
Retained Earnings		
Retained Earnings - Previous Year		(482,582.96)
Current Earnings		2,462.57
Total Retained Earnings		(480,120.39)
TOTAL EQUITY		448,158.49
LIABILITIES AND EQUITY		2,596,522.12

Mackenzie Regional Waste Management Commission
Income Statement
For The Seven Months Ended July 31, 2008

REVENUE	ACTUAL	ACTUAL	BUDGET	BUDGET
Tipping Fees				
County Transfer Stations	73,660.33		135,983.00	
County Commercial/Industrial	100,188.35		218,398.00	
County Construction/Demolition	4,996.12		5,092.00	
County Farm Residential	4,636.33		8,315.00	
Total County Revenue		183,481.13		367,788.00
High Level Residential	45,423.02		72,434.00	
High Level Commercial/Industrial	118,458.99		200,581.00	
High Level Construction/Demolition	0.00		11,164.00	
Total High Level Revenue		163,882.01		284,179.00
Rainbow Lake Residential	10,480.55		17,666.00	
Rainbow Lake Commercial/Industrial	26,286.62		43,467.00	
Total Rainbow Lake Revenue		36,767.17		61,133.00
Dene Tha Residential	14,043.95		23,028.33	
Dene Tha Commercial/Industrial	10,513.75		0.00	
Dene Tha Construction/Demolition	0.00		32,768.33	
Dene Tha Transfer Station	42,002.75		79,526.67	
Total Dene Tha Revenue		66,560.45		135,323.33
Paddle Prairie Transfer Station		21,940.01		38,501.67
Non Members		1,213.75		15,000.00
Contaminated Soil		20,589.04		17,373.00
Total Tipping Fees		494,433.56		919,298.00
Other Revenue				
Return on Investments		6,500.96		15,000.00
Interest Earned		10,593.24		0.00
Extra Work Charges		3,415.00		1,000.00
Batteries		524.00		0.00
Expense Reimbursements		2,204.28		0.00
WCB Dividends		1,176.37		0.00
Provincial Grant		4,346.00		0.00
Total Other Revenue		28,759.85		16,000.00
TOTAL REVENUE		523,193.41		935,298.00
EXPENSE				
Operating Expenses				
Accounting Fees		75.00		0.00
Advertising		2,359.05		3,000.00
Administration & Service Fees		80.19		0.00
Auditing Fees		17,458.65		12,500.00
Finning Maintenance/Labour	12,397.75		5,000.00	
Flat Repairs	202.02		350.00	
Oil Sampling	0.00		40.00	
Steam Cleaning /Vehicle Wash	1,026.60		1,987.50	
Vehicle Oil Changes	264.86		300.00	
Welding Maintenance	1,756.28		15,000.00	
Parts and Materials	9,223.17		5,664.00	
Other Labour	1,596.00		0.00	
Total Equip/Vehicle Maint & Repair		28,466.68		28,341.50

	ACTUAL	ACTUAL	BUDGET	BUDGET
Gas	2,805.04		3,772.80	
Oil, Grease & Anti-freeze	2,247.76		3,500.00	
Propane	0.00		0.00	
Total Fuel/Gas & Oil		27,066.87		42,306.40
Building & Content Insurance	259.55		650.75	
Equipment Insurance	217.63		350.00	
Vehicle Insurance	0.00		250.00	
General Liability Insurance	608.14		0.00	
Total Insurance		1,085.32		1,250.75
Contributed to Landfill Closure		60,506.67		103,725.77
Dry Cleaning		217.25		0.00
Land Lease Agreement		0.00		750.00
Legal Fees		78.75		3,000.00
Membership / Conf. Fees		1,459.62		0.00
Postage & Freight		1,291.14		840.00
Rental Fees		279.48		200.00
Subscriptions & Publications		0.00		300.00
Survey for Annual Report		6,174.93		6,000.00
Coffee/Drinking Water Supplies	601.69		1,000.00	
Janitorial Supplies	612.91		500.00	
Office Supplies	3,660.96		2,500.00	
Shop Supplies	2,240.05		1,200.00	
Total Supplies		7,115.61		5,200.00
Telephone & Communications		4,247.91		2,520.00
Tools Expense		252.60		0.00
Training and Education		1,271.00		2,000.00
Travel & Subsistence		5,777.98		11,327.40
Electrical	1,889.23		3,840.00	
Heat	6,148.09		5,200.00	
Water Tank Fills	911.25		1,440.00	
Total Utilities		8,948.57		10,480.00
Vehicle Lease		2,947.14		5,052.24
Total Operating Expenses		175,160.41		238,794.06
Payroll Expenses				
Wages and Salaries		158,234.47		275,499.76
Commission Members Per Diem		4,175.00		8,550.00
EI Expense	3,682.32		7,665.13	
CPP Expense	7,170.59		16,517.67	
WCB Expense	(328.54)		4,270.25	
Employee Benefits	10,213.20		14,648.70	
Pension Expense	9,257.47		17,508.20	
Alberta Health Care	2,552.00		0.00	
Vacation Pay Expense	236.52		0.00	
Total Employer Contributions		32,783.56		60,609.95
Total Payroll Expenses		195,193.03		344,659.71
Site Maintenance and Repair				
Building Repair		4,085.56		2,900.00
Ground Water		3,370.00		7,700.00
Leachate		14,162.00		20,800.00
Landfill Contract		(10,000.00)		0.00
Bin Rental		3,300.00		0.00
Recycling Expenses		3,538.20		17,400.00
Roads		7,876.20		8,070.40

	ACTUAL	ACTUAL	BUDGET	BUDGET
Surface Water		0.00		500.00
Site Clean up		2,050.00		3,000.00
New Signs at the Landfill Entrance		845.00		1,400.00
Total Site Maintenance and Repair		29,226.96		61,770.40
Other Expenses				
Amortization/Depreciation		110,714.92		0.00
Bank & Collection Charges		91.09		0.00
Bank Reconciliation Adjustments		0.01		0.00
Interest Expense		7,875.42		0.00
Uncollectible Accounts		0.00		1,000.00
Waste Hauling Study		0.00		20,000.00
Master Plan Review		0.00		3,000.00
Promotion		55.00		0.00
Cleanup Rural Dump Sites		0.00		20,000.00
Soil Testing (Hydrocarbons)		2,414.00		0.00
Total Other Expenses		121,150.44		44,000.00
TOTAL EXPENSE		520,730.84		689,224.17
NET INCOME		2,462.57		246,073.83
Capital Expenditures				
Loader / Backhoe		0.00		19,907.79
Compactor		23,920.70		48,565.15
Fuel Tank for Office		0.00		3,000.00
Office Expansion		62,592.49		20,000.00
Office Furniture		1,295.76		0.00
Reclaim Monitoring Wells/ Covers		9,000.00		15,500.00
Litter Fences		15,769.00		15,692.00
Future Excavation of Cell 5 (over 10 yrs)		0.00		30,000.00
Total Capital Expenditures		112,577.95		152,664.94
Net Income - Capital Expenditures		(110,115.38)		93,408.89

MACKENZIE REGIONAL WASTE MANAGEMENT COMMISSION
REQUEST FOR DECISION

Issue:
Minutes of May 23, 2008

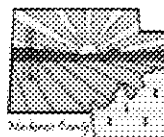
Recommendation:
Adoption of the minutes.

Comments:

Date: August 25, 2008

Submitted By: Pat Sliworsky, Manager

Reviewed By:



Mackenzie Regional Waste Management Commission

Regular Board Meeting
Stardust Motor Inn at 6 p.m.
May 23, 2008

MINUTES

In Attendance	Stuart Watson Jerry Chomiak Peter Braun Carrie Demkiw	Chair, Mackenzie County Vice Chair, Town of High Level Mackenzie County Town of High Level
Staff:	Pat Sliworsky Kathy Bancarz	Manager Administrative/Financial Assistant
Regrets:	Rose Cretney Kelly Drover John Klassen	Town of Rainbow Lake Town of Rainbow Lake Director of Environmental Services, Mackenzie County

1. CALL TO ORDER

Stuart Watson called the meeting to order at 6:22 p.m.

2. ADOPTION OF AGENDA

Resolution #18-08

Moved by Peter Braun
THAT the agenda for the May 23, 2008 board meeting be adopted with the following additions:

- 7.8 Agenda Package Distribution
- 7.9 Web Site Designer
- 7.10 New Office Setup
- 7.11 BJE Group

CARRIED

3. DELEGATIONS

There were none

4. REPORTS

4.1 Managers Report January, February, March and April, 2008

- The waste in 2008 is lower as compared to 2007. 425 metric tonnes less was placed in the pit in 2007. In looking at the report there was a difference of -300 Tonnes of commercial/industrial from Mackenzie County and -50

Tonnes of residential from High Level. My conclusion is that these can both be attributed to the closer of Footner.

- Danyelle Davis has been hired for the Summer Student position.
- One load of tires was finally taken out of the Zama Transfer Station.
- At the Regional Landfill, one monitoring well was reclaimed and another was drilled to replace it. The secure covers were left behind and will be put in place once the ground thaws.
- The office building is looking at a late May or early June setup.
- The street light above the Landfill entrance gate and sign has been installed and is working.
- We have started the recycling of inkjet cartridges and cell phones at the Landfill. Once more boxes are received this will be expanded to the rest of the serving area. All money made goes directly to the local food banks.
- I am working on implementing the recycling of milk containers.

The 2007 Year End Report and the 2007 Groundwater Report was handed out. Members will review the reports at their convenience and contact Pat Sliworsky, Manager, with any questions.

Resolution #19-08

Moved by Jerry Chomiak

THAT the manager's report be accepted for information.

CARRIED

**4.2 Financial Report as of
April 30, 2008**

There was a discussion regarding the amount of cash on hand, and whether some of it can be put into term deposits. Administration will look into what amount can be put into a short term investment. Administration will also check into what the current investments are allotted for, and contact the members with their findings through email.

Resolution #20-08

Moved by Carrie Demkiw

THAT the financial report be accepted for information.

CARRIED

4.3 Auditor's Report

Pat Sliworsky, Manager, relayed the Auditor's message that money is not to be pulled out of the long-term investments for operating funds. There were also four recommendations from the Auditor, three of them have been taken care of and the last one is in progress.

Resolution #21-08

Moved by Peter Braun

THAT the Auditor's Report be accepted for information.

CARRIED

**4.4 Edmonton Conference
and Tours Report**

Stuart Watson, Peter Braun and Manager Pat Sliworsky attended the conference in Edmonton. Stuart recommended that all the members attend one of these conferences as it was very informative. This specific conference is held every three years. The tours of Clover Bar Landfill and the Gold Bar Wastewater Treatment Plant were very enlightening about what to do when you are bigger than we are. A great percentage, approximately 70-80%, of the recycling there is composted instead of going into the landfill. Stuart mentioned that Eco Funds has attractive recycle bins for parks and are willing to pay for them. They also learned that the Alberta Research Council has grant money available. It was discussed that cardboard is a big problem here as it can't be feasibly sent to Edmonton anymore, and that grant money could be used to obtain a small grinder. Cardboard could be grinded and used for compost and daily cover. On the way back from the conference they stopped by the Landfill at Gunn and the Landfill and Waste Transfer Station in Whitecourt. At the Waste Transfer Station they were able to see how the composting is done. When using only yard waste, there is very little smell.

Resolution #22-08

Moved by Jerry Chomiak
THAT the report be accepted for information.

CARRIED

5. ADOPTION OF MINUTES**5.1 Regular Meeting of
January 12, 2008****Resolution #23-08**

Moved by Peter Braun
THAT the minutes of the January 12, 2008 Mackenzie Regional Waste Management Commission meeting be adopted as presented.

CARRIED

6. BUSINESS ARISING FROM THE MINUTES

There were none

7. NEW BUSINESS**7.1 4-H Agreement****Resolution #24-08**

Moved by Jerry Chomiak
THAT the Commission enter into an agreement with the Great North 4-H Beef Club that would pay them all monies collected for any batteries and e-waste they collect, with the condition that the group provides the Commission with a copy of its insurance certificate.

CARRIED

**7.2 Addition to the
Human Resource
Policy****Resolution #25-08**

Moved by Peter Braun
THAT the Commission accept the addition to the Human Resource Policy of 5.7 Travel Benefit Allowance as presented.

CARRIED

**7.3 Health and Safety
Policy****Resolution #26-08**

Moved by Carrie Demkiw
THAT the Commission adopt the Health and Safety Policy 52-08 as presented.

CARRIED

**7.4 Freon Removal
Contract**

The Board discussed the current charge to the public. People don't like to pay for Freon removal, and the concern is they will try to do it themselves or find a dumping spot for their appliance. The intent was not to have people not bring them into the landfill. They then discussed waiving the Freon charge and only charging the weight back to the appropriate municipality as it is more cost efficient than paying someone to clean up illegal dumping.

Resolution #27-08

Moved by Peter Braun
THAT the Commission extend the contract with 1215778 Alberta Ltd. (A&L Maintenance) with the change of the new prices quoted effective August 1, 2008 to July 31, 2010.

CARRIED

Resolution #28-08

Moved by Jerry Chomiak
THAT effective immediately there will be no charge for freon removal at the Mackenzie Regional Landfill and to change Bylaw 35-05 effective May 24, 2008.

CARRIED

**7.5 Fixed Asset
Capitalization Policy****Resolution #29-08**

Moved by Carrie Demkiw
THAT the Commission adopt the Fixed Asset Capitalization Policy 53-08 as presented.

CARRIED

7.6 Trade Show Prize

Pat Sliworsky, Manager, suggested a 3 in 1 mower. The board discussed the importance of trade shows and get to know you nights as a means of awareness and education. Funds for the mower will come out of the advertising budget.

Resolution #30-08

Moved by Peter Braun
THAT Pat Sliworsky, Manager, promotes the Commission through

local Trade Shows etc. within the user area.

CARRIED

7.7 Composting Discussion

- Good idea to start composting at the Landfill, but with yard waste only.
- Contractors won't haul yard waste themselves because they get charged for it.
- Need to register before collecting.
- What is the cost involved in setting up?
The Commission already has the equipment, water supply and pump. It's pretty self-sufficient so the cost is minimal.

Resolution #31-08

Moved by Carrie Demkiw
THAT Pat Sliworsky, Manager, start the application process for composting at the landfill.

CARRIED

7.8 Agenda Package Distribution

It was discussed that the agendas have been too large to send as an attachment. Administration will continue to send a link to the agenda.

7.9 Web Site Designer

Resolution #32-08

Moved by Jerry Chomiak
THAT the Commission enter into an agreement with George Vanberg to set up and host the web site for the Mackenzie Regional Waste Management Commission at a web site address of "mrwmc.com".

CARRIED

7.10 New Office Setup

Pat Sliworsky, Manager, presented quotes from Built Rite Structures and EOS Pipeline for the installation of the pilings.

Resolution #33-08

Moved by Peter Braun
THAT the Commission accept Built Rite Structures proposal with the screw pilings to set up the new office at the Landfill with the condition that they go in at least twelve feet.

CARRIED

7.11 BJE Group

Resolution #34-08

Moved by Carrie Demkiw
THAT the Commission remove the contract holdback (contract performance security) from accounts payable and place it into cash.

CARRIED

8. CORRESPONDENCE

**8.1 Waste Management
Assistance Program**

Resolution #35-08

Moved by Peter Braun
THAT the letter be accepted for information.

CARRIED

**8.2 Letter From Recycle
Plus**

Resolution #36-08

Moved by Peter Braun
THAT the letter be accepted for information.

CARRIED

9. NOTICE OF MOTION

10. NEXT MEETING DATE

The next meeting is September 6, 2008 at 10:00 a.m. starting at the Mackenzie Regional Landfill for a tour and then proceeding to the Olivier room at the Stardust.

11. IN-CAMERA ITEMS

Resolution #37-08

Moved by Jerry Chomiak
THAT the Board go in-camera at 8:48 p.m.

CARRIED

Resolution #38-08

Moved by Carrie Demkiw
THAT the Board come out of camera at 9:16 p.m.

CARRIED

Resolution #39-08

Moved by Jerry Chomiak
THAT the Commission obtain the final invoice from KPMG for the extras and seek legal advice, send the legal advice to the board members through secure means and follow up with conference calls.

CARRIED

12. ADJOURNMENT

Resolution #40-08

Moved by Peter Braun
THAT the meeting be adjourned at 9:20 p.m.

CARRIED

Chairman

Mackenzie Regional Waste Management Commission
Minutes of May 23, 2008

Manager

MACKENZIE REGIONAL WASTE MANAGEMENT COMMISSION
REQUEST FOR DECISION

Issue:
Appointment of the Secretary-Treasurer 26-05

Recommendation:
THAT the Commission rescind the Appointment of the Secretary-Treasurer 26-05 policy.

Comments:
There is no need to appoint a position that currently exists within the Commission's administration.

Date: August 11, 2008

Submitted By: Pat Sliworsky, Manager

Reviewed By:

Mackenzie Regional Waste Management Commission

TITLE: Appointment of the Secretary-Treasurer
POLICY NO: 26-05
RESCINDS: N/A

Policy Objective: To ensure due diligence in all financial activities of the Commission.

Policy Statement:

At the first meeting following the Municipal Elections or an annual Organizational Meeting, the Commission shall appoint a Secretary-Treasurer as recommended by the Commission Manager.

Responsibilities and Authorities:

The Secretary-Treasurer shall, at the direction of the Commission:

- Administer the funds of the Commission
- Maintain accounting records of all transactions of the Commission on a computer system together with appropriate backup and archival copies in accordance with goods records management practices, showing all its receipts and expenditures relating to the Facilities
- Submit financial statements for the preceding months to the Board at its regular meetings
- Deposit all monies on behalf of the Commission
- Pay all accounts that have been approved by the Commission for payment
- Conduct regular audits of the Operating Contractor's financial practices
- Coordinate and facilitate the annual independent audit of the Commission's financial affairs

As directed by the Commission, the Secretary-Treasurer shall deposit funds into trust accounts and reserves established by the Commission.

The Secretary-Treasurer shall invest portions of the reserve and trust funds, as directed by the Commission Board.

In discharging its responsibilities, the Secretary-Treasurer shall open and keep proper and accurate books of account of all the financial transactions involved in the management and operation of the Facilities.

Entries shall be made therein of all matters as are usually written and entered in books of account kept by persons engaged in concerns of a similar nature to that carried on by the Commission.

*Mackenzie Regional Waste Management Commission
Appointment of the Secretary-Treasurer Policy 26-05
Page 2 of 2*

All books, securities, letters and other things belonging to or concerning the Commission and Facilities managed by the Secretary-Treasurer shall be kept at the municipal office of the Secretary-Treasurer and shall be accessible to the Board of Directors and/or officer of the Commission who shall have free access at all reasonable times to inspect, examine and copy them.

	DATE:	RES. NO.
Approved	October 22, 2005	67-05
Amended		
Amended		

MACKENZIE REGIONAL WASTE MANAGEMENT COMMISSION
REQUEST FOR DECISION

Issue:
Reserve & Trust Fund Accounts 24-05

Recommendation:
THAT the Commission accept the change to the Reserve & Trust Fund Accounts 24-05 policy.

Comments:
The only change is to replace the title “Secretary-Treasurer” to “Administrative/Financial Assistant”.

Date: August 11, 2008
Submitted By: Pat Sliworsky, Manager
Reviewed By:

**Mackenzie Regional
Waste Management Commission**

TITLE: Reserve and Trust Fund Accounts
POLICY NO: 24-05
RESCINDS: N/A

Policy Objective: To ensure the Commission is able to meet present and future financial obligations by establishing reserve funds.

Policy Statement:

The Commission shall establish and maintain trust funds, sufficient to meet defined and future financial obligations.

Background:

A Landfill Reserve was established to provide for capital expenditures at the landfill site.

Responsibilities and Authorities:

The Commission will establish the sources and level of funding to be deposited in each reserve fund.

The Secretary-Treasurer shall establish reserve funds, deposit and invest the money collecting in the funds, in a responsible manner as approved by the Commission.

The Secretary-Treasurer shall provide financial status reports to the Commission for each reserve fund on a regular basis, as directed by the Board.

	DATE:	RES. NO.
Approved	October 22, 2005	67-05
Amended		
Amended		

MACKENZIE REGIONAL WASTE MANAGEMENT COMMISSION
REQUEST FOR DECISION

Issue:
Batteries 51-06

Recommendation:
THAT the Commission accept the change to the Batteries 51-06 policy.

Comments:
The section quoted below to be deleted now that all batteries are being recycled from the Landfill.

“Batteries will not be accepted at the landfill from commercial businesses.”

Date: August 11, 2008

Submitted By: Pat Sliworsky, Manager

Reviewed By:

MACKENZIE REGIONAL WASTE MANAGEMENT COMMISSION POLICY

	Policy No.: 51-06
Facility: Mackenzie Regional Landfill	Effective Date: January 20, 2007
Policy Title: BATTERIES	Page 1 of 1

PURPOSE:

To establish the storage and management of automobile batteries for recycling.

POLICY:

1. Automobile batteries containing liquids and or lead will be accepted at the landfill for recycling purposes from residents.
2. Batteries will not be accepted at the landfill from commercial businesses.
3. All efforts will be made to encourage landfill customers to separate batteries from other waste.
4. Batteries accepted for recycling will be stored:
 - a. On wooden pallets placed over a lime pad;
 - b. In a sheltered area; or
 - c. Covered with a tarp or plastic, or in an approved container.

RESPONSIBILITIES:

1. Recycling of automobile batteries will be coordinated by the Manager in accordance with contractual agreements.
2. The Board will be responsible to review the policy.

	DATE	RESOLUTION
Approved	January 20, 2007	12-07
Amended		
Amended		

MACKENZIE REGIONAL WASTE MANAGEMENT COMMISSION
REQUEST FOR DECISION

Issue:
Tires 34-05

Recommendation:
THAT the Commission accept the change to the Tires 34-05 policy.

Comments:

The section quoted below to be deleted now that all tires are being recycled from the Landfill.

“Larger tires will have a disposal fee attached to cover recycle fees, as the tire recycling board does not subsidize them. The Mackenzie Regional Landfill Commission accept the Large tires with rims intact as per current fee schedule.”

Date: August 11, 2008

Submitted By: Pat Sliworsky, Manager

Reviewed By:

**Mackenzie Regional
Waste Management Commission
Policy**

TITLE: Special Waste, Tires
POLICY NO: 34-05
RESCINDS: N/A

Policy Objective: To ensure that any waste materials that may have long term impact on the Commission and its facilities, are subject to environmental, engineering and regulatory due diligence before they are accepted for handling and disposal.

Policy Statement:

The Mackenzie Regional Landfill will accept Tires subjected to Federal, Provincial and Municipal governing regulations in force by the Environmental Protection and Enhancement Act.

Background:

The High Level Landfill will accept vehicle Tires at no charge. Larger tires will have a disposal fee attached to cover recycle fees, as the tire recycling board does not subsidize them. The Mackenzie Regional Landfill Commission accept the Large tires with rims intact as per current fee schedule.

Responsibilities and Authorities:

The waste hauler must inform the scale operator they are hauling Tires. The waste hauler will be required to dispose of the Tires in the designated area. The Landfill operator will inspect the load for contaminates.

The Mackenzie Regional Landfill will encourage waste generators to divert their Tires to a Tire recycler.

	DATE	RESOLUTION NO
Adopted	October 22, 2005	67-05

**MACKENZIE REGIONAL WASTE MANAGEMENT COMMISSION
REQUEST FOR DECISION**

Item # _____

Issue:

Charges to Northern Services for waste totaling \$629.86 including GST.

Recommendation:

THAT the Commission continue to pursue payment from Northern Services for waste delivered to the Mackenzie Regional Landfill on June 6th, 2008.

Manager Comments:

The contractor was hauling in 18 loads of clean fill from June 2-6, 2008 at no charge. The 19th load contained a mix of the clean fill and 3 blocks of concrete that was added to the load as they claimed to be cleaning up the "Town of High Level's" broken curb. Because this load was mixed it was placed in our Construction Pit and charged out at \$49.25/Tonne.

Date: August 11, 2008

Submitted By: Pat Sliworsky, Manager

Reviewed By:

Mackenzie Regional Waste Management Commission
 Box 235
 High Level, Alberta T0H 1Z0

INVOICE

Invoice No.: 2209
 Date: Jun 30, 2008

Northern Services
 9509 - 105 Avenue
 High Level, Alberta T0H 1Z0

Business No.:

Item No.	Unit	Description	Tax	Unit Price	Amount
1029 1011	Attached 11635	Top Soil (HL Com/Ind) - No Charge Commercial / Industrial (HL)	G	599.87	599.87
		G - GST, 5% GST			29.99
Terms: Net 30 Payment Options: Cash or Cheque Only				Total Amount:	629.86

Jul 02,08
08:47:30

MACKENZIE REGIONAL LANDFILL - SE1-110-20-W5M
Customer = NORTH
Charges to Customers for Shipments Received
From Date Jun 01,08 to Jun 30,08

Page

Ticket	Load	Src	Netwgt	NetTon	Total	Total w/tax
11414	22	CMID	7170	7.17	0.00	0.00
11418	26	CMID	6620	6.62	0.00	0.00
11472	5	CMID	6620	6.62	0.00	0.00
11477	10	CMID	6110	6.11	0.00	0.00
11483	16	CMID	7040	7.04	0.00	0.00
11489	22	CMID	9290	9.29	0.00	0.00
11491	24	CMID	10320	10.32	0.00	0.00
11496	29	CMID	9930	9.93	0.00	0.00
11600	5	CMID	9830	9.83	0.00	0.00
11606	11	CMID	8580	8.58	0.00	0.00
11609	14	CMID	9330	9.33	0.00	0.00
11612	15	CMID	9720	9.72	0.00	0.00
11617	20	CMID	9710	9.71	0.00	0.00
11618	21	CMID	10190	10.19	0.00	0.00
11621	24	CMID	10250	10.25	0.00	0.00
11623	26	CMID	11040	11.04	0.00	0.00
11627	30	CMID	10500	10.50	0.00	0.00
11630	33	CMID	10670	10.67	0.00	0.00
11635	38	CMID	12180	12.18	0.00	0.00
TOTAL:			175100	175.10	599.87	629.86
					599.87	629.86



HIGHWAY 43 EAST WASTE COMMISSION

BOX 219

SANGUDO, ALBERTA T0E 2A0

Office: 785-3411 or 1(866)880-5722

Landfill: 967-3466



July 16th, 2008

Mackenzie Regional Waste Management Commission
Box 235
High Level, AB T0H 1Z0

Dear Sir:

I am writing to all Waste/Landfill Commissions in Alberta requesting your support on lobbying the provincial government to ban the sale or giving away of plastic bags in the province of Alberta.

As many of you have seen in the newspapers and on TV, plastic bags are having a great impact on our environment by creating litter and harming birds, fish and animals.

In landfills, plastic bags do not disintegrate for years and the contents in these bags remain for years as well. The cost incurred by the landfill to control the litter is very high. This includes the collection of plastic that blows around and gets tangled in equipment: we have to cover the plastic immediately in order to stop it from blowing around. We are sure you also have other issues with these products.

Wouldn't it be nice if Alberta led the way and banned the use of plastic bags? Many other municipalities have already taken steps to ban the use of plastic bags. We would like your support in this important issue. We believe this would go a long way in helping the environment and in cleaning up our roads and highways by eliminating a good deal of litter.

We look forward to hearing from you as with your help we are prepared to meet with the minister to take action on this issue. This is only the first step as many other items/issues have to be looked at - plastic can/bottle holders, mattresses and chesterfields which are also being placed in the landfill.

Yours truly,

Per: [Signature]

Gordon M. Harris
Chairperson
HWY 43 East Waste Commission

GH/to

PAINT THE TOWN GREEN

OCTOBER 8-10, 2008
JASPER, ALBERTA



AGENDA

Wednesday, October 8, 2008

10:00 am – 3:00 pm Golf Tournament

Highly acclaimed for its challenging layout and spectacular beauty, the Jasper Park Lodge Golf Club is rated by SCOPES of Magazine as the #1 Best Golf Resort in Canada Today. The award winning par 72 golf course remains one of the "must play" courses in Canada, it's a true classic that combines the best of what golf is all about.

Dress code: No hard soles

10:00 am – 11:30 am Horseback Riding

Join us for a guided trail ride departing from the stable at Jasper Park Lodge, and traversing along the mighty Athabasca River, returning by Linn. Arrive with great views at Mount Edith Cavell. No experience necessary. Limit 24 riders. If demand warrants, we may organize a second ride at 1:00 - 2:30 pm.

11:00 am Conference Registration / Exhibit Set-up

1:00 pm Zero Waste Workshop

- o Richard Anthony

3:30 pm – 5:00 pm PLENARY SESSION: Communities Taking Charge

- o Gary Peacock (Town of Turner Valley) - Polystyrene Ban
- o Chad Townsend (Town of Denville) - Newspaper EPR

5:30 pm Dinner Break - on your own

7:00 pm Welcoming Reception: Are You Smarter Than a Fourth Grader?

Paint the Town Green – Agenda

Thursday, October 9, 2008

8:30 am Conference Opening and Welcome

- o Don Zumbal (RCA President)
- o Diane McQueen (Parliamentary Secretary, Minister of Environment)

9:00 am – 10:00 am KEYNOTE ADDRESS

- o Andrew Nelson, *Director of Garbage: The Revolution Starts At Home*

Sponsored by BFI

10:30 am – 12:00 pm SESSION: Zero Waste Communities

- o John Marshall (Stat Cars) – *Where are we at?*
- o Paul Crain (City of Toronto)
- o Richard Anthony – *Introduction to Zero Waste*

12:00 pm – 1:30 pm Lunch and AGM**1:30 pm – 3:00 pm** CONCURRENT SESSION: Multi-Family Recycling

- o Yvonne De Gouveia (AMRC) – *Multi-Residential Recycling Programs in Ontario*
- o Allen Lynch (Vancouver North Shore program)
- o Rose Bawellier (City of Edmonton)

1:30 pm – 3:00 pm CONCURRENT SESSION: Rural Programs

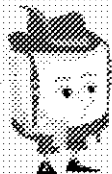
- o Dave Whitford (Alberta Environment) – *Agricultural Plastics Diversion*
- o Shawn Searle (eCycle Solutions Inc.) and Lyle Hoffman (Hoffman Consulting) – *Recycling 101 for Rural Communities*
- o Lyle Dorn (Arrow Business Training) – *One-Of-A-Kind's Trash is a Rural Area's Treasure*

3:30 pm – 5:00 pm CONCURRENT SESSION: Composting

- o Barry Frazier (Product Care Association) – *Reduce Composting Full-Cost Report*
- o Hugh Penigrew (RD of Sachem) and Mike Tate (Greenway Limited) – *Lime Stabilization: Another Tool in Your Treatment Suite*

3:30 pm – 5:00 pm CONCURRENT SESSION: IC&I

- o Diana Sathiy (Calgary Board of Education) – *CBE Sponsorship Initiative*
- o Fred Branson (City of Calgary) – *Dumpsterless Downtown*
- o Mike Chapman (MPCar) – *CO2 Standards & Waste Reduction Programs*

6:30 pm Oktoberfest Banquet
Rs of Excellence Awards

Friday, October 10, 2008

8:45 am – 10:15 am PLENARY SESSION: Innovation

Paint the Town Green – Agenda

- o Dan Zembal (Alberta Waste & Recycling) - Resource Recovery: Working together to make C&D recycling more practical and affordable
- o Gary Spataro (City of Edmonton) - Edmonton Reuse Centre
- o Kathleen Boyles (Waste Recursion Store) - Compostable dishes and cutlery
- o Wade Chan (Alberta Research Council) - Paper from straw

10:45 am – 12:00 pm PLENARY SESSION: Looking Forward

- o Ahmad Harsani (Canadian Standards Association) - Greenwashing

12:00 pm – 1:00 pm WORKING LUNCH**1:00 pm** CONFERENCE CLOSING

- o Dawn Brown (incoming RCA President)

1:00 pm – 2:30 pm ALBERTA RECYCLING COLLECTION SITE WORKSHOP

The Alberta Recycling Collection Site Workshop will provide an overview of Alberta's Tires, Electronics and Paint Recycling programs for municipal collection site managers and operators. The workshop will include an update on progress toward adding Off-The-Road tires and new electronic materials to the programs, as well as an update on the progress of the new paint recycling program. The Alberta Recycling Management Authority is looking forward to your participation in this valuable session and to hearing your feedback on these programs.

Session times and topics are subject to change. Speakers will be added as they are confirmed.

Paint the Town Green is being powered with 100% green electricity. This means that **Green Power** will inject carbon-free green power onto the Alberta grid to match the amount of electricity used by the event. All of the electricity injected on our behalf will be sourced exclusively from producers who meet or exceed the federal government's "Ecology" standard for renewable energy.

[back to RCA home](#) | [sponsors](#) | [contact us](#) | [speakers](#) | [agenda](#) | [register](#) | [back to top](#) |

© copyright 2008 Recycling Council of Alberta

08/25/2008 11:02 FAX

001/001



Town of High Level
 10511 103 STREET
 HIGH LEVEL AB T0H 1Z0

HISTORICAL

Invoice:	IVC0000000007002
Type:	
Date:	7/21/2008
Page:	1

TOWN OF HIGH LEVEL
 Gateway to the South

Bill to:

MACKENZIE REGIONAL WASTE
 BOX 235
 HIGH LEVEL AB T0H 1Z0

Ship to:

MACKENZIE REGIONAL WASTE
 BOX 235
 HIGH LEVEL AB T0H 1Z0

Invoice Number		Customer ID		Payment Terms	
MACK008				Net 30	
Quantity	Description	Unit	Unit Price	Amount	Tax
1.00	ADMIN SUPPORT FOR 2007	Each	\$0.00	\$25,000.00	\$25,000.00
				\$25,000.00	
				\$0.00	
				\$0.00	
				\$0.00	
				\$0.00	
				\$25,000.00	