

MACKENZIE REGIONAL WASTE MANAGEMENT COMMISSION

AGENDA

FEBRUARY 07, 2009

Page

- 1. CALL TO ORDER**
- 2. ADDITIONS TO OR DELETIONS FROM THE AGENDA**
- 3. ADOPTION OF AGENDA**
- 4. DELEGATIONS**
 - 4.1 Auditor

- 5. REPORTS**
 - 5.1 Manager's Report for November and December, 2008

 - 5.2 Financial Reports December 31, 2008

- 6. ADOPTION OF MINUTES**

3-16

17-22

Page		
	6.	ADOPTION OF MINUTES
23-28	6.1	Minutes of November 29, 2008 Regular Meeting
	7.	BUSINESS ARISING FROM THE MINUTES
	8.	NEW BUSINESS
	8.1	Direction Regarding Waste Hauling
29-30	8.2	Uncollectible Accounts
	9.	CORRESPONDENCE
31	9.1	Peace Country Proposal
32	9.2	Composting Council of Canada
	10.	NOTICE OF MOTION
	11.	NEXT MEETING
	11.1	April 04, 2009
	12.	IN-CAMERA ITEMS
	13.	ADJOURNMENT

MACKENZIE REGIONAL WASTE MANAGEMENT COMMISSION
REQUEST FOR DECISION

Issue:
Monthly Operating Reports for November and December 2008

Recommendation:
Reviewed by Manager and accept for information.

Comments:

Date: February 7, 2009
Submitted By: Pat Sliworsky, Manager
Reviewed By:

Manager's Report

- On December 6th, 2008 we had a very successful Christmas Party. It was attended by all staff members, two board members, and most had a chaperone.
- Presently working with the Auditor to complete the 2008 Audit for the May 1st, 2009 deadline.
- Presently working on the 2008 Annual Report and the 2008 Groundwater Monitoring Report.
- I am planning on attending the 2-day Composting Workshop in Red Deer, previously sent to each board member.
- I have had interest from 2 different metal recyclers. Peace Country has sent in their proposal.

***Mackenzie Regional Waste Management Commission
Class IIB Landfill***

Monthly Operations Report and Summary

Month of November 2008

Reporting To:

Alberta Environmental and Protection

Attention: Mr. George Neurohr

10320 - 99th Street

Grande Prairie, Alberta

T8V 6J4

Phone: 780-538-5351

Mackenzie Regional Waste Management Commission
Monthly Operations Summary
Month of November 2008

1: Supervision and Operating Personnel

<u>Landfill Manager</u>	<u>Pat Sliworsky</u>	<u>MRWMC</u>
<u>Scale Operations</u>	<u>Erica Deveaux</u>	<u>MRWMC</u>
<u>Landfill Operator</u>	<u>Neville Pomeroy</u>	<u>MRWMC</u>
<u>Equipment Operator</u>	<u>Hamid Achour</u>	<u>MRWMC</u>
<u>Administrative/Financial Assistant</u>	<u>Kathy Bancarz</u>	<u>MRWMC</u>

2: Load Inspections Inspections are conducted on a random basis throughout the month

3: Daily Activities Please find attached the Summary of Daily Activities and Information
Daily journal filed at the landfill office;
Scale cleaning
Sorting and hauling recycled metals and white goods

4: Operational Problems
Ravens
Customers placing waste at incorrect locations
Customers not covering & securing loads

5: Public Complaints

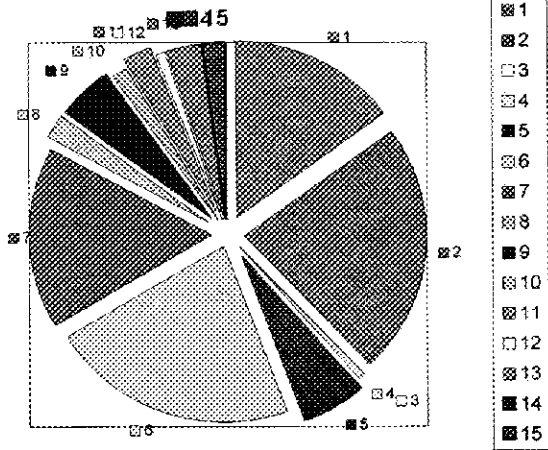
6: Special Activities Litter fences moved to appropriate locations
White goods being hauled off of the site
Metal being sorted and hauled off of the site

Mackenzie Regional Waste Management Commission
Monthly Reporting Summary
Month November 2008

Monitoring Parameters	Frequency	Method	Sampling Location	Reporting Method	Attachment of Action
Weight & type of waste received	Daily, per load	Landfill Weigh Scale	Landfill Entrance	Scale Record per load	Attached Waste Received Report
Weight & type of waste removed	Daily, per load	Landfill Weigh Scale	Landfill Entrance	Scale Record per load	Attachment #2 Load Summary
Hazardous waste detection	Daily, per load	Observation and load inspection	Landfill & Entrance and disposal storage sites	Operating Record	None observed this reporting
Location of waste deposited	Daily	Per survey record	Active portion of cell	Operating Record	cell #3B
Cover Thickness	Daily	Observation	Active portion of cell	Operating Record	None, using contaminated dirt as daily cover
Working Face Width	Daily	Observation	Active portion of cell	Operating Record	75ft working face, monitored
Leachate level monitoring	Per operation plan	Measurement	Leachate storage pond or cell	Operating Record	Annual reporting
Leachate analysis	Per operation plan	Grab Sample	Leachate storage pond or cell	Operating Record	none
Volume of leachate removed	As removed	Measurement	Leachate storage pond or cell	Operating Record	none
Surface Monitoring	Surface water monitoring plan	Observation	Active portion of cell	Operating Record	Daily
Intermediate cover	When cover applied	Observation	Completion of cell	Operating Record	none
Final cover	Cell Closure	Survey cores and test pits	Completion of cell	Survey Record	none
Groundwater monitoring	Per GWP as amended	Measurement and grab sample	Groundwater monitoring wells	Operating Record	Annual reporting

Mackenzie Regional Landfill

**Waste Received
November 2008**

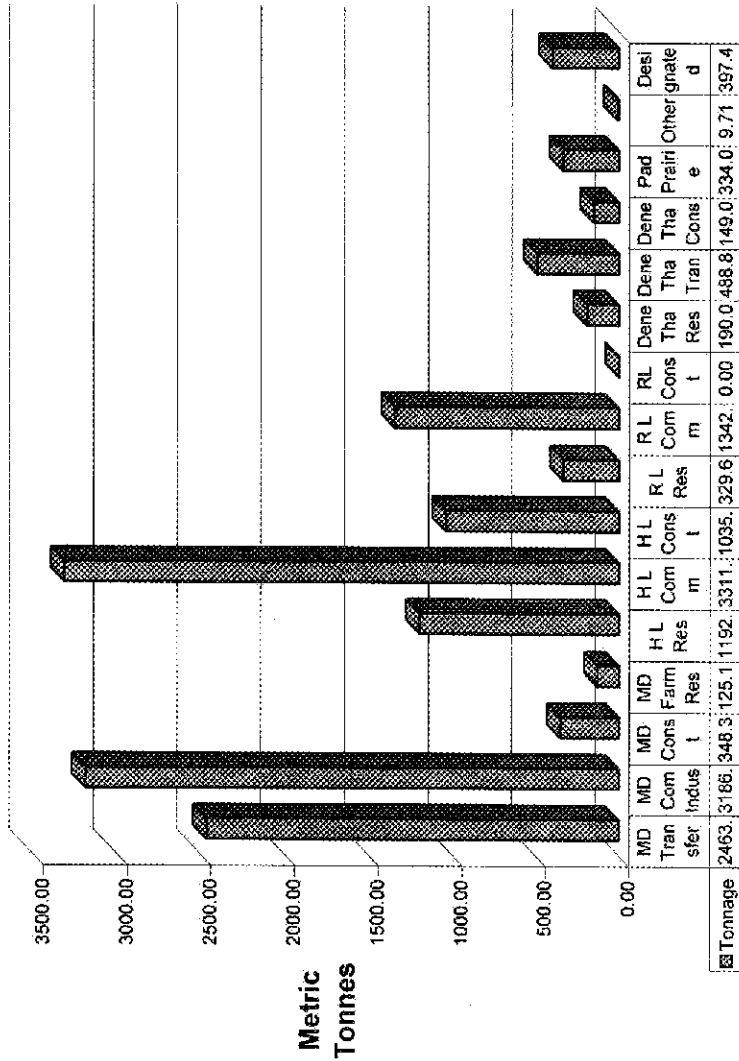


Waste Volume Legend	Metric Tonne	% of Total	Legend
MD #23 Transfer Stations	177.14	15%	1
MD #23 Commercial - Industrial	269.92	23%	2
MD #23 Construction - Demolition	0.00	0%	3
MD #23 Farm Residential	6.56	1%	4
H L Residential	69.62	6%	5
H L Commercial-Industrial	255.70	22%	6
H L Construction-Demolition	194.90	17%	7
R L Residential	28.37	2%	8
R L Commercial-Industrial	58.77	5%	9
Dene Tha Residential	16.27	1%	10
Dene Tha Transfer	27.83	2%	11
Dene Tha Const./Demo.	8.82	1%	12
Paddle Transfer	38.90	3%	13
Non-Members	0.00	0%	14
Products to Designated Areas	21.26	2%	15
Total	1174.06	100%	

Items not included in chart

Soil with Hydrocarbons	38.43
DIRT	0.00

Landfill Accumulated Tonnage to November 30, 2008



Source of Waste

**Mackenzie Regional Waste Management Commission
Summary of Waste Received in 2008 - Sorted by Area - per Metric Tonne**

	January	February	March	April	May	June	July	August	September	October	November	December	Total
Mackenzie County	127.36	187.45	141.30	270.87	333.28	291.80	268.88	263.03	263.02	274.72	251.87	177.14	2,653.87
Transfer Stations	239.33	333.97	370.24	260.94	274.75	268.29	230.03	282.64	332.84	332.84	263.92	263.92	3,186.42
Commercial - Industrial	0.00	0.00	16.24	36.89	7.76	23.01	14.59	237.78	10.23	1.73	0.00	0.00	948.32
Construction - Demolition	5.46	4.74	3.67	3.86	37.38	23.40	10.71	14.92	15.00	6.56	0.00	0.00	125.13
Farm Residential	386.06	488.06	521.46	602.30	643.75	606.60	592.20	799.35	632.79	637.00	483.62	0.00	6,125.94
Town of High Level													
Residential	65.58	60.08	64.00	74.04	228.18	137.56	159.95	118.81	36.27	108.37	65.85	0.00	1,182.07
Commercial - Industrial	248.72	263.97	270.80	269.52	446.73	339.65	262.11	304.30	312.24	338.10	255.70	0.00	3,311.99
Construction - Demolition	2.56	0.77	11.52	7.86	155.11	20.03	35.22	43.75	22.69	543.17	184.80	0.00	1,035.39
Total High Level	390.88	394.82	346.32	352.22	632.04	507.24	455.26	481.88	433.20	988.24	520.22	0.00	5,638.31
Town of Rainbow Lake													
Residential	24.42	23.04	33.86	28.38	35.39	38.40	33.97	24.68	28.57	34.28	28.37	0.00	320.68
Commercial - Industrial	66.63	56.46	53.54	58.71	76.12	137.83	60.21	68.18	77.20	606.03	58.71	0.00	1,342.08
Construction - Demolition	0.00	0.00	0.00	0.00	0.00	0.00	0.00	0.00	0.00	0.00	0.00	0.00	0.00
Total Rainbow Lake	91.05	79.50	87.40	87.09	111.51	176.23	114.12	94.84	105.77	640.28	87.14	0.00	1,871.74
Dena Tha First Nations													
Residential	11.90	15.76	12.48	15.97	22.19	17.25	16.32	18.97	18.69	24.36	16.27	0.00	180.07
Transfer Station	36.11	52.91	42.06	34.01	74.96	44.36	51.16	43.05	36.00	45.16	27.83	0.00	483.65
Construction - Demolition	6.29	6.30	4.65	9.70	24.55	10.01	30.56	13.55	28.26	14.30	8.92	0.00	148.07
Total Dena Tha	54.30	75.03	59.19	59.68	131.67	71.62	88.06	75.57	82.98	81.84	53.92	0.00	827.99
Poudre Prairie Waste Settlement													
Transfer Station	17.74	17.24	21.21	19.03	36.78	26.87	33.26	41.28	46.26	32.47	38.90	0.00	334.03
Total Poudre Prairie	17.74	17.24	21.21	19.03	36.78	26.87	33.26	41.28	46.26	32.47	38.90	0.00	334.03
Others	0.00	0.00	0.00	0.00	0.00	0.00	0.00	0.00	0.00	0.00	0.00	0.00	0.00
Non-members	0.00	0.00	0.00	0.00	0.00	0.00	0.00	0.00	0.00	0.00	0.00	0.00	0.00
Total Other	0.00	0.00	0.00	0.00	0.00	0.00	0.00	0.00	0.00	0.00	0.00	0.00	0.00
Total Waste Deposited in Pit	854.84	965.66	1,056.32	1,614.92	1,747.16	1,388.66	1,272.92	1,472.11	1,302.00	2,279.84	1,182.80	0.00	14,686.32
Products to Designated Area													
E-waste, electronics	0.51	0.65	0.77	0.84	1.61	0.13	1.35	3.72	0.83	2.69	0.35	0.00	15.67
Liquid Sludge	14.63	12.78	10.02	16.83	2.52	11.49	4.21	13.84	2.60	16.61	13.63	0.00	124.54
Wooden Burnable	2.62	2.00	4.85	4.17	24.34	18.00	16.74	10.93	6.19	39.24	3.63	0.00	132.46
Plastic Containers	0.00	0.00	0.00	0.00	0.00	0.22	0.00	0.45	0.50	0.00	0.00	0.00	1.17
Batteries	1.32	0.67	1.08	0.26	3.00	0.00	1.48	3.88	0.16	3.78	0.07	0.00	14.86
Tires	1.24	0.00	3.31	3.33	3.22	3.36	8.16	6.84	4.06	5.32	0.88	0.00	38.89
White Goods/Assorted metals	2.11	1.16	2.61	7.07	19.89	4.78	7.00	9.83	5.87	4.06	2.29	0.00	65.86
Household Hazardous Waste	0.00	0.00	0.00	0.00	0.00	0.03	0.01	0.00	0.00	0.00	0.00	0.00	0.40
Compost	0.00	0.00	0.00	0.00	0.00	0.00	0.00	0.00	0.00	2.43	0.00	0.00	2.44
Oil Filter/Oil Containers	0.06	0.00	0.00	0.01	0.27	0.21	0.00	0.17	0.53	0.54	0.00	0.00	1.31
Asbestos	0.00	0.00	0.00	0.00	0.00	0.00	0.00	0.69	0.00	0.00	0.00	0.00	0.69
Average haulers responsible for	0.00	0.05	0.60	0.00	0.01	0.00	0.04	0.00	0.16	0.00	0.03	0.00	0.33
Total to Designated Areas	22.98	16.86	22.08	34.61	55.06	39.22	39.07	50.16	20.21	76.08	21.26	0.00	397.45
Products Diverted for Recycle	5.24	1.71	7.38	11.61	8.48	18.01	19.01	24.24	16.77	18.76	3.69	0.00	136.07
2008 Monthly Total by Weight	977.33	983.24	1,077.40	1,646.53	1,802.21	1,427.88	1,314.93	1,522.26	1,332.21	2,395.70	1,174.95	0.00	14,903.75
2007 Monthly Total by Weight	1,030.12	1,195.46	1,272.70	1,307.85	1,746.95	1,434.49	1,470.43	1,326.92	1,348.29	1,340.10	893.97	0.00	16,143.90
2008 Monthly Total by Weight	1,144.29	1,121.97	1,523.96	1,379.77	1,856.67	1,751.20	1,481.43	1,735.83	2,108.06	1,565.09	1,018.01	0.00	17,828.85
Soil with Hydrocarbons	0.00	0.00	0.00	0.00	0.00	1873.24	751.20	171.70	27.82	46.88	38.43	0.00	2,909.27
DIRT	0	0	0	8.11	165.00	476.64	53.66	71.89	344.24	938.44	0	0	2,156.67

***Mackenzie Regional Waste Management Commission
Class IIB Landfill***

Monthly Operations Report and Summary

Month of December 2008

Reporting To:

Alberta Environmental and Protection

Attention: Mr. George Neurohr

10320 - 99th Street
Grande Prairie, Alberta
T8V 6J4

Phone: 780-538-5351

Mackenzie Regional Waste Management Commission
Monthly Operations Summary
Month of December 2008

1: Supervision and Operating Personnel

<u>Landfill Manager</u>	<u>Pat Sliworsky</u>	<u>MRWMC</u>
<u>Scale Operations</u>	<u>Erica Deveaux</u>	<u>MRWMC</u>
<u>Landfill Operator</u>	<u>Neville Pomeroy</u>	<u>MRWMC</u>
<u>Equipment Operator</u>	<u>Hamid Achour</u>	<u>MRWMC</u>
<u>Administrative/Financial Assistant</u>	<u>Kathy Bancarz</u>	<u>MRWMC</u>

2: Load Inspections Inspections are conducted on a random basis throughout the month

3: Daily Activities Please find attached the Summary of Daily Activities and Information
Daily journal filed at the landfill office;
Scale cleaning
Sorting and hauling recycled metals and white goods

4: Operational Problems
Ravens
Customers placing waste at incorrect locations
Customers not covering & securing loads

5: Public Complaints

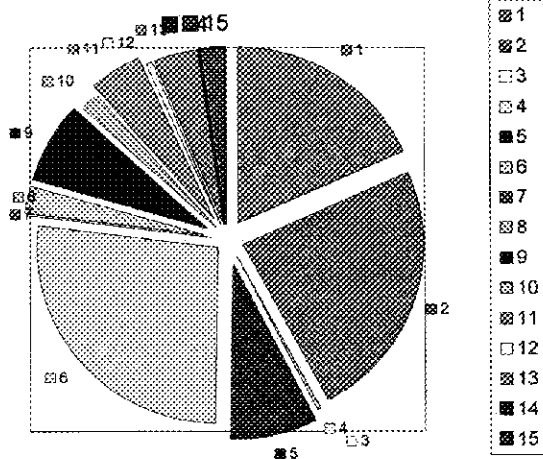
6: Special Activities Litter fences moved to appropriate locations
White goods being hauled off of the site
Metal being sorted and hauled off of the site

**Mackenzie Regional Waste Management Commission
Monthly Reporting Summary
Month December 2008**

Monitoring Parameters	Frequency	Method	Sampling Location	Reporting Method	Attachment of Action
Weight & type of waste received	Daily, per load	Landfill Weigh Scale	Landfill Entrance	Scale Record per load	Attached Waste Received Report
Weight & type of waste removed	Daily, per load	Landfill Weigh Scale	Landfill Entrance	Scale Record per load	Attachment #2 Load Summary
Hazardous waste detection	Daily, per load	Observation and load inspection	Landfill & Entrance and disposal storage sites	Operating Record	None observed this reporting
Location of waste deposited	Daily	Per survey record	Active portion of cell	Operating Record	Cell #3A
Cover Thickness	Daily	Observation	Active portion of cell	Operating Record	None, using dirt as daily cover
Working Face Width	Daily	Observation	Active portion of cell	Operating Record	75ft working face, monitored
Leachate level monitoring	Per operation plan	Measurement	Leachate storage pond or cell	Operating Record	Annual reporting
Leachate analysis	Per operation plan	Grab Sample	Leachate storage pond or cell	Operating Record	none
Volume of leachate removed	As removed	Measurement	Leachate storage pond or cell	Operating Record	none
Surface Monitoring	Surface water monitoring plan	Observation	Active portion of cell	Operating Record	Daily
Intermediate cover	When cover applied	Observation	Completion of cell	Operating Record	none
Final cover	Cell Closure	Survey cores and test pits	Completion of cell	Survey Record	none
Groundwater monitoring	Per GWP as amended	Measurement and grab sample	Groundwater monitoring wells	Operating Record	Annual reporting

Mackenzie Regional Landfill

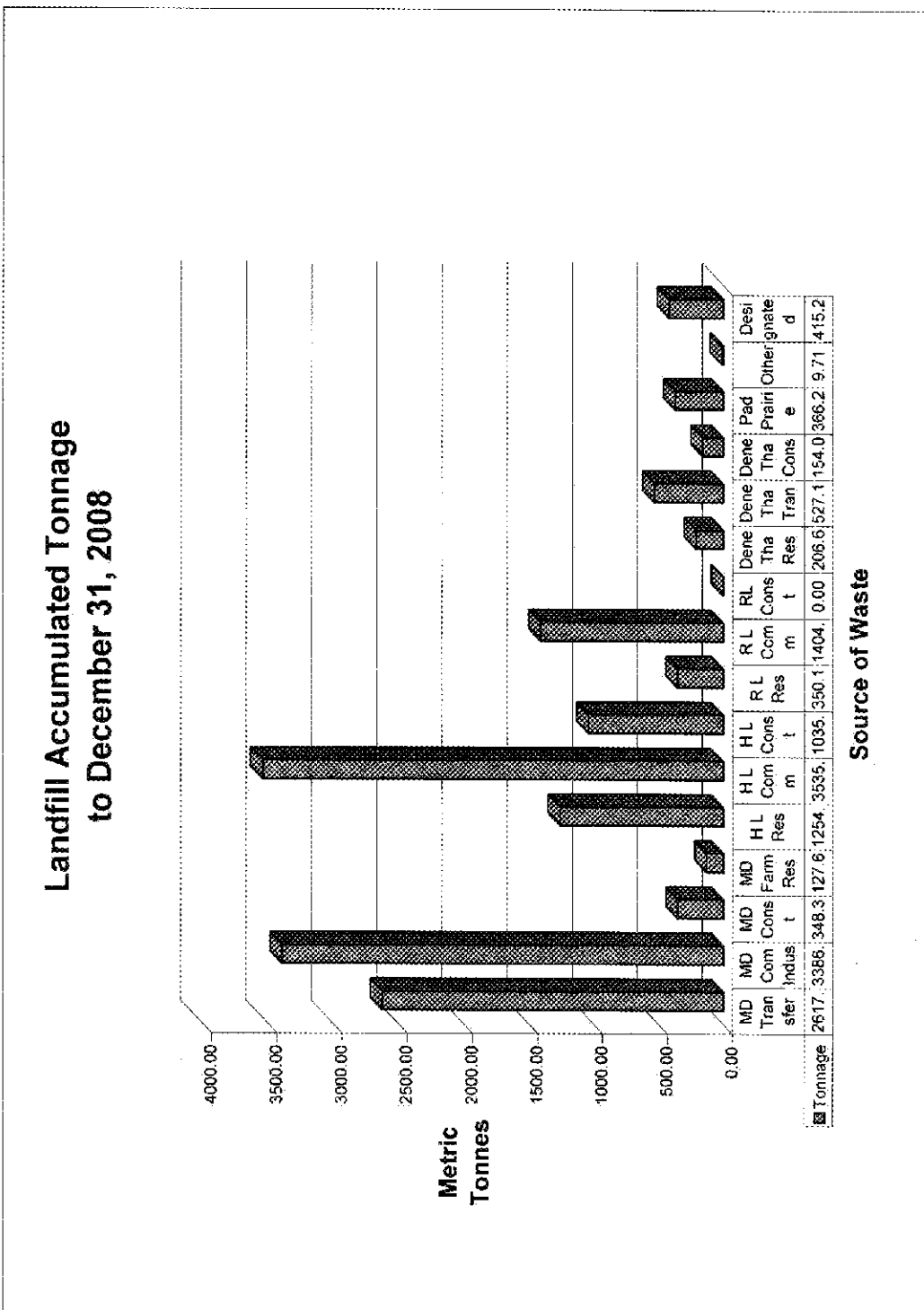
**Waste Received
December 2008**



Waste Volume Legend	Metric Tonne	% of Total	Legend
MD #23 Transfer Stations	153.69	18%	1
MD #23 Commercial - Industrial	200.10	24%	2
MD #23 Construction - Demolition	0.00	0%	3
MD #23 Farm Residential	2.49	0%	4
H L Residential	62.83	8%	5
H L Commercial-Industrial	223.49	27%	6
H L Construction-Demolition	0.39	0%	7
R L Residential	20.42	2%	8
R L Commercial-Industrial	62.54	7%	9
Dene Tha Residential	15.38	2%	10
Dene Tha Transfer	38.28	5%	11
Dene Tha Const./Demo.	6.15	1%	12
Paddle Transfer	32.22	4%	13
Non-Members	0.00	0%	14
Products to Designated Areas	17.81	2%	15
Total	835.79	100%	

Items not included in chart

Soil with Hydrocarbons	30.55
DIRT	0.00



**Mackenzie Regional Waste Management Commission
Summary of Waste Received in 2008 - Sorted by Area - per Metric Tonne**

	January	February	March	April	May	June	July	August	September	October	November	December	Total
Mackenzie County													
Transfer Stations	121.38	138.45	121.38	210.87	533.26	291.80	266.88	264.07	274.72	251.91	177.14	153.69	2671.36
Commercial - Industrial	299.33	353.87	370.24	290.64	274.75	266.29	290.03	282.64	332.84	273.85	368.92	200.10	3396.31
Construction - Demolition	0.00	0.00	16.24	36.98	7.76	23.01	14.58	237.78	10.23	1.73	0.00	0.00	348.32
Farm Residential	5.40	4.74	3.67	3.80	27.38	23.40	10.71	14.92	15.00	9.55	6.36	2.48	127.62
Total Mackenzie County	366.09	469.06	531.46	502.30	543.15	606.50	602.20	759.38	632.79	637.00	453.82	358.28	6,473.81
Town of High Level													
Residential	69.58	80.08	84.00	75.04	228.18	147.56	153.66	113.81	95.27	108.97	69.82	62.83	1254.90
Commercial - Industrial	248.72	263.57	270.00	269.52	449.75	338.65	262.11	304.30	312.24	336.10	255.70	223.49	3253.35
Construction - Demolition	2.96	0.77	11.52	7.66	15.11	20.03	43.75	194.30	22.95	14.30	0.00	0.00	1035.77
Total High Level	320.68	324.62	346.32	352.22	693.04	507.24	459.52	491.66	430.20	568.24	520.22	286.71	5,826.03
Town of Rainbow Lake													
Residential	24.42	25.04	35.88	33.85	35.39	35.40	33.91	24.88	29.57	34.26	28.37	20.42	350.10
Commercial - Industrial	69.63	56.46	53.84	68.11	75.12	137.83	89.21	59.18	77.20	90.03	98.77	62.54	1404.80
Construction - Demolition	0.00	0.00	0.00	0.00	0.00	0.00	0.00	0.00	0.00	0.00	0.00	0.00	0.00
Total Rainbow Lake	94.05	73.50	87.40	81.69	110.51	173.23	114.12	94.04	106.77	124.29	87.14	62.96	1,754.70
Dane The First Nations													
Residential	11.90	15.79	12.48	15.07	27.19	17.25	16.22	18.97	13.89	24.30	17.45	15.38	208.53
Transfer Station	36.11	52.31	42.08	34.01	74.66	44.86	51.76	43.05	39.00	43.18	27.65	38.28	527.13
Construction - Demolition	8.29	6.33	4.65	8.70	24.69	10.01	29.58	13.55	28.29	14.30	7.64	6.15	154.04
Total Dane The First Nations	56.30	74.43	59.21	57.78	126.54	72.12	97.56	75.57	81.18	81.78	52.74	60.21	887.70
Peddie Prairie Metis Settlement													
Transfer Station	17.74	17.24	21.21	16.03	38.78	25.87	33.25	41.28	46.26	32.47	38.90	32.22	356.25
Total Peddie Prairie	17.74	17.24	21.21	16.03	38.78	25.87	33.25	41.28	46.26	32.47	38.90	32.22	366.23
Others													
Non-members	0.00	0.00	0.00	0.00	0.00	0.00	0.00	0.00	0.00	0.00	0.00	0.00	0.00
Total Others	0.00	0.00	0.00	0.00	0.00	0.00	0.00	0.00	0.00	0.00	0.00	0.00	0.00
Total Waste Deposited in Pit	854.94	956.66	1,055.32	1,014.92	1,747.15	1,389.68	1,272.92	1,472.11	1,302.00	2,273.84	1,152.80	817.96	15,324.25
Products to Designated Area													
Electronics	0.51	0.35	0.77	0.84	1.81	0.13	1.36	3.72	0.83	2.68	0.38	1.72	18.36
Liquid Sump	14.63	12.76	10.02	18.83	2.52	11.49	4.21	13.84	2.90	19.81	13.62	13.14	137.48
Wooden Burnable	2.52	2.00	4.59	4.17	24.34	19.00	16.74	10.93	6.19	38.24	3.65	0.00	132.46
Pesticide Containers	0.00	0.00	0.00	0.00	0.00	0.22	0.00	0.45	0.50	0.00	0.00	0.00	1.17
Batteries	1.32	0.97	1.09	0.28	3.00	0.00	1.48	3.68	1.18	3.75	0.07	0.00	14.86
Tires	1.24	0.00	3.21	3.33	3.22	3.36	6.19	6.84	4.08	5.32	0.85	0.00	40.62
White Goods/Assorted metals	2.11	1.15	2.01	7.07	18.85	4.78	7.00	9.83	5.67	4.06	2.28	2.05	67.91
Household Hazardous Waste	0.00	0.00	0.00	0.00	0.00	0.00	0.01	0.00	0.00	0.00	0.38	0.00	0.42
Compost	0.00	0.00	0.00	0.00	0.00	0.00	0.00	0.00	0.00	0.00	0.01	0.00	2.44
Oil Filter/Oil Containers	0.06	0.00	0.00	0.01	0.27	0.21	0.00	0.17	0.05	0.54	0.00	0.19	1.50
Acetone	0.00	0.00	0.00	0.00	0.00	0.00	0.00	0.66	0.30	0.00	0.00	0.00	0.96
Animals/Feeders responsible for	0.00	0.00	0.00	0.00	0.01	0.00	0.04	0.00	0.18	0.00	0.00	0.00	0.23
Total to Designated Area	22.38	16.58	22.08	34.81	55.06	38.22	38.87	50.16	20.21	76.86	21.24	17.81	416.24
Products Diverted for Recycle	5.24	1.77	7.38	11.61	28.19	8.48	18.01	24.24	10.77	18.79	3.59	4.55	136.07
2008 Monthly Total by Weight	877.31	972.24	1,077.40	1,048.53	1,802.21	1,427.86	1,311.93	1,522.28	1,322.21	2,356.70	1,174.08	838.78	15,739.53
2007 Monthly Total by Weight	1,030.12	876.76	1,189.48	1,272.79	1,807.85	1,434.49	1,434.49	1,470.43	1,338.92	1,548.36	1,340.10	863.87	15,133.90
2009 Monthly Total by Weight	1,144.28	1,121.87	1,523.96	1,379.77	1,656.67	1,481.43	1,481.43	1,735.83	2,108.09	1,585.09	1,018.61	1,342.86	17,828.83
Soil with Hydrocarbons	0.00	0.00	0.00	0.00	0.00	1873.24	751.20	171.70	27.82	46.88	38.43	30.55	2,519.82
DNET	0	0	98.59	8.11	165.00	475.54	53.86	71.89	344.24	339.44	0	0	2,166.67

MACKENZIE REGIONAL WASTE MANAGEMENT COMMISSION
REQUEST FOR DECISION

Issue:
Financial Report

Recommendation:

Adoption of the Financial Report.

Comments:

Date: February 7, 2009

Submitted By: Pat Sliworsky, Manager

Reviewed By:

Mackenzie Regional Waste Management Commission
Comparative Balance Sheet
December 31, 2008

	2008	2007
ASSETS		
Current Assets		
Chequing Account	126,794.35	841,094.28
Petty Cash	100.00	0.00
Undeposited Funds	0.00	0.00
Safety Program Funds	641.37	0.00
Total Cash	127,535.72	841,094.28
Accounts Receivable	118,197.02	80,467.98
Accounts Receivable - Other	0.00	0.00
Allowance For Doubtful Accounts	(850.00)	(850.00)
GST Rebate	3,860.72	4,175.69
Accrued Return on Investments	0.00	1,209.40
Security Deposits	0.00	0.00
Total Receivables	121,207.74	85,003.07
Prepaid Insurance	1,398.41	0.00
Prepaid Land Lease	407.47	0.00
Prepaid Membership Fees	231.83	0.00
Prepaid Conference Fees	0.00	0.00
Prepaid Legal Fees	0.00	0.00
Prepaid Telephone	94.70	0.00
Pre-Paid Advertising	0.00	0.00
Prepaid Rental Fees	224.99	0.00
Short Term Investments	400,000.00	0.00
Total Current Assets	651,100.86	926,097.35
Long Term Investments		
Term Deposit Investments	494,830.78	486,977.30
Total Long Term Investments	494,830.78	486,977.30
Capital Assets		
Building Assets	259,405.49	196,739.00
Accumulated Amortization	(130,256.68)	(121,608.86)
Net - Building Assets	129,148.81	75,130.14
Engineering Structures	2,236,671.28	2,211,902.28
Accumulated Amortization	(1,481,229.28)	(1,361,398.63)
Net - Engineering Structures	755,442.00	850,503.65
Furniture and Equipment	73,619.96	70,724.20
Accumulated Amortization	(53,171.34)	(50,898.59)
Net - Furniture and Equipment	20,448.62	19,825.61
Machinery and Equipment	635,667.83	210,128.76
Accumulated Amortization	(70,419.04)	(7,004.29)
Net - Machinery and Equipment	565,248.79	203,124.47
Total Capital Assets	1,470,288.22	1,148,583.87
TOTAL ASSETS	2,616,219.86	2,561,658.52
LIABILITIES		
Current Liabilities		
Accounts Payable	22,468.68	19,103.10
Accounts Payable - Other	279.31	283.01
Credit Card Payable	1,555.89	1,936.04
Staledated Cheques	(53.50)	(53.50)
Current Portion of Long Term Debt	0.38	31,025.00
Accrued Insurance	0.00	0.00
Accrued Interest on Long Term Debt	0.00	705.26

	2008	2007
Accrued Metal Recycling	0.00	0.00
Accrued Audit Fees	13,500.00	12,200.00
Accrued Bin Rental	0.00	0.00
Accrued Equipment Repair Expense	0.00	6,745.76
Accrued Freight Expense	17.00	
Accrued Surface Water Testing	0.00	0.00
Accrued Payroll	5,476.83	9,954.48
Accrued Utilities	307.29	0.00
EI Payable	0.04	0.00
CPP Payable	(0.16)	0.00
Income Tax Payable	37.26	0.00
Total Receiver General	37.14	0.00
AD&D	0.00	0.00
Dependent Life	0.00	0.00
Dental	0.00	0.00
Extended Health	0.00	0.00
Group Life	0.00	(5.12)
Long Term Disability	0.00	(12.08)
Short Term Disability	0.00	(5.60)
Total Premiums Payable	0.00	(22.80)
LAPP (ER) Payable	0.00	0.00
LAPP (EE) Payable	0.00	0.00
Total Pension Payable	0.00	0.00
Workers Compensation Payable	0.00	3,631.08
Vacation Pay Payable	0.00	0.00
GST Charged on Sales	0.00	15,990.73
GST Paid on Purchases	(16.00)	(9,057.30)
GST Adjustments	0.00	0.00
ITC Adjustments	0.00	0.00
GST Owing	(16.00)	6,933.43
Total Current Liabilities	43,572.82	92,440.86
Long Term Liabilities		
Debenture Payable	350,975.00	350,975.00
Deferred Contributions - Cap. Asset	61,766.46	69,216.75
Landfill Reclamation	1,707,405.31	1,603,679.54
Total Long Term Liabilities	2,120,146.77	2,023,871.29
TOTAL LIABILITIES	2,163,719.59	2,116,312.15
EQUITY		
Equity		
Equity in Capital Assets	697,369.76	697,369.76
General Landfill Reserve	283,909.12	230,909.12
Total Equity	981,278.88	928,278.88
Retained Earnings		
Retained Earnings - Previous Year	(534,476.76)	(544,478.51)
Current Earnings	5,698.15	61,546.00
Total Retained Earnings	(528,778.61)	(482,932.51)
TOTAL EQUITY	452,500.27	445,346.37
TOTAL LIABILITIES AND EQUITY	2,616,219.86	2,561,658.52

**Mackenzie Regional Waste Management Commission
Comparative Income Statement
For The Year Ended December 31, 2008**

REVENUE	Budget 2008		Actual 2008		Actual 2007
Tipping Fees					
County Transfer Stations	135,983.00		128,703.68		
County Commercial/Industrial	218,398.00		168,640.99		
County Construction/Demolition	5,092.00		17,328.84		
County Farm Residential	8,315.00		7,497.11		
Total County Revenue		387,788.00		322,170.62	
High Level Residential	72,434.00		69,663.18		
High Level Commercial/Industrial	200,581.00		180,657.82		
High Level Construction/Demolition	11,164.00		50,083.07		
Total High Level Revenue		284,179.00		300,404.07	
Rainbow Lake Residential	17,666.00		17,443.04		
Rainbow Lake Commercial/Industrial	43,467.00		69,316.45		
Total Rainbow Lake Revenue		61,133.00		86,759.49	
Dene Tha Residential	23,028.33		25,614.65		
Dene Tha Commercial/Industrial	0.00		221.25		
Dene Tha Construction/Demolition	32,768.33		19,407.60		
Dene Tha Transfer Station	79,526.67		66,408.00		
Total Dene Tha Revenue		135,323.33		111,651.50	
Paddle Prairie Transfer Station		38,601.67		45,831.26	
Non Members		15,000.00		1,213.75	
Contaminated Soil		17,373.00		21,809.76	
Total Tipping Fees		919,298.00		889,840.45	869,005.41
Other Revenue					
Return on Long-term Investments		15,000.00		6,644.08	29,978.75
Interest Earned		0.00		13,254.02	
Extra Work Charges		1,000.00		4,419.00	
Batteries		0.00		1,338.00	
Expense Reimbursements		0.00		2,204.28	
WCB Dividends		0.00		1,176.37	
Deferred Contributions - Capital		0.00		7,450.29	8,089.67
E-Waste		0.00		2,060.05	
Paint / HH Waste Recycling		0.00		2,051.00	
Metal Recycling		0.00		100.00	
Total Other Revenue		16,000.00		40,697.09	38,068.42
TOTAL REVENUE		935,298.00		930,537.54	907,073.83
EXPENSE					
Operating Expenses					
Accounting Fees		0.00		75.00	
Advertising		3,000.00		3,070.09	3,957.04
Administration & Service Fees		0.00		18,807.34	4,783.87
Auditing Fees		12,500.00		30,958.66	28,095.00
Finning Maintenance/Labour	5,000.00		17,777.75		
Landfill Purchased Maintenance					56,956.32
Flat Repairs	350.00		650.64		
Oil Sampling	40.00		0.00		
Steam Cleaning /Vehicle Wash	1,987.50		1,524.96		
Vehicle Oil Changes	300.00		532.99		
Welding Maintenance	15,000.00		1,893.78		

	Budget 2008		Actual 2008		Actual 2007
Parts and Materials	5,664.00		11,943.70		22,715.51
Other Labour	0.00		1,774.00		6,241.45
Total Equip/Vehicle Maint & Repair		28,341.50		36,097.82	12,860.40
Deisel (Dyed)	35,033.60		38,082.58		
Gas	3,772.80		4,481.84		
Oil, Grease & Anti-freeze	3,500.00		3,826.41		
Total Fuel/Gas & Oil		42,306.40		46,392.83	14,078.67
Building & Content Insurance	650.75		693.14		932.15
Equipment Insurance	350.00		451.59		
Vehicle Insurance	250.00		181.62		242.50
General Liability Insurance	0.00		1,061.38		
Total Insurance		1,250.75		2,387.73	0.00
Contributed to Landfill Closure		103,725.77		103,725.77	97,391.31
Dry Cleaning		0.00		235.25	
Land Lease Agreement		750.00		291.03	743.40
Landfill Contract					147,783.36
Legal Fees		3,000.00		135.00	860.36
Membership / Conf. Fees		0.00		2,879.17	192.94
Office Rental					4,664.00
Postage & Freight		840.00		2,028.55	1,837.72
Rental Fees		200.00		504.49	
Subscriptions & Publications		300.00		0.00	185.37
Survey for Annual Report		6,000.00		6,174.93	
Coffee/Drinking Water Supplies	1,000.00		1,064.38		
Janitorial Supplies	500.00		865.40		
Office Supplies	2,500.00		5,503.39		5,456.33
Shop Supplies	1,200.00		3,690.84		6,169.71
Total Supplies		5,200.00		11,124.01	0.00
Telephone & Communications		2,520.00		6,107.13	3,611.57
Tools Expense		0.00		718.42	
Training and Education		2,000.00		1,426.00	695.00
Travel & Subsistance		11,327.40		11,577.97	5,557.07
Electrical	3,840.00		2,861.01		1,718.27
Heat	5,200.00		12,961.25		5,099.41
Water Tank Fills	1,440.00		1,538.75		781.25
Total Utilities		10,480.00		17,361.01	7,598.93
Vehicle Lease		5,052.24		5,052.24	
Total Operating Expenses		238,794.06		307,130.43	435,609.98
Payroll Expenses					
Wages and Salaries		275,499.75		280,992.62	161,677.58
Commission Members Per Diem		8,550.00		9,425.00	9,260.00
EI Expense	7,665.13		5,327.15		
CPP Expense	16,517.67		10,749.60		
WCB Expense	4,270.25		2,168.90		5,815.01
Employee Benefits	14,648.70		18,174.74		
Pension Expense	17,508.20		18,586.86		
Alberta Health Care	0.00		4,752.00		
Vacation Pay Expense	0.00		547.56		
Total Employer Contributions		60,609.95		60,306.81	27,639.55
Total Payroll Expenses		344,659.71		350,724.63	204,392.14
Site Maintenance and Repair					
Building Repair		2,900.00		6,421.75	10,276.80
Ground Water		7,700.00		6,624.00	

	Budget 2008	Actual 2008	Actual 2007
Leachate	20,800.00	16,234.59	
Landfill Contract		(10,000.00)	
Bin Rental	3,800.00	3,600.00	
Recycling Expenses	13,800.00	16,439.35	
Roads	8,070.40	9,624.06	
Surface Water	500.00	248.00	
Site Clean up	3,000.00	2,050.00	
New Signs at the Landfill	1,400.00	1,329.00	
Total Site Maintenance and Repair	61,770.40	52,568.75	10,276.80
Other Expenses			
Amortization/Depreciation	0.00	194,165.97	148,328.25
Bank & Collection Charges	0.00	97.62	2,116.58
Bank Reconciliation Adjustments	0.00	0.01	
Interest Expense	0.00	17,138.78	5,757.50
Uncollectible Accounts	1,000.00	0.00	682.31
Promotion	0.00	64.20	
Safety Awards	0.00	535.00	
Cleanup Rural Dump Sites	20,000.00	0.00	
Soil Testing (Hydrocarbons)	0.00	2,414.00	
Total Other Expenses	21,000.00	214,415.58	156,884.65
TOTAL EXPENSE	666,224.17	924,839.39	807,163.57
NET INCOME	269,073.83	5,698.15	99,910.26
Capital Expenditures	Budget 2008	Actual 2008	Actual 2007
Electric Perimeter Fence	30,000.00	0.00	
Track Loader / Backhoe	19,908.00	0.00	
816-F2 Compactor (over 10 years)	48,535.00	31,024.62	38,364.25
Fuel Tank for Office	3,000.00	0.00	
Office Expansion	20,000.00	62,666.49	
Litter Fences	15,692.00	15,769.00	
Waste Hauling Study	20,000.00	20,000.00	
Master Plan Review (due in 2010)	3,000.00	3,000.00	
Future Excavation of Cell 5 (over 10 yrs)	30,000.00	30,000.00	
Office Furniture	0.00	1,295.76	
Reclaim Monitoring Wells/ Covers	15,500.00	9,000.00	
Heat Blankets for Propane Tanks	0.00	1,600.00	
New Motor for 963 Track Loader	0.00	41,338.07	
Total Capital Expenditures	205,635.00	215,693.94	38,364.25
Net Income - Capital Expenditures	63,438.83	(209,995.79)	61,546.01

Note: The 816-F2 Compactor was purchased in 2008 with the debenture recorded in 2007 \$384,201.00

The funds for the Master Plan Review, Future Excavation for Cell 5, and the Waste Hauling Study were transferred from Retained Earnings to the General Landfill Reserve

MACKENZIE REGIONAL WASTE MANAGEMENT COMMISSION
REQUEST FOR DECISION

Issue:
Minutes of November 29, 2008

Recommendation:
Adoption of the minutes.

Comments:

Date: February 7, 2009
Submitted By: Pat Sliworsky, Manager
Reviewed By:



Mackenzie Regional Waste Management Commission

Regular Board Meeting
Stardust, Olivier Room
10:00 a.m.
November 29, 2008

MINUTES

In Attendance	Stuart Watson Jerry Chomiak Peter Braun Kelly Drover John Klassen	Chair, Mackenzie County Vice Chair, Town of High Level Mackenzie County Town of Rainbow Lake Director of Environmental Services, Mackenzie County
Staff:	Pat Sliworsky Kathy Bancarz	Manager Administrative/Financial Assistant
Delegates:	Rod Chalifoux Rob Griffin	High Level Native Friendship Centre The Groundworx Co.
Regrets:	Carrie Demkiw Rose Cretney	Town of High Level Town of Rainbow Lake
<u>1. CALL TO ORDER</u>		
1.1 Election of Chairman and Vice-Chairman	<p>Chairman Stuart Watson called the meeting to order at 10:00 a.m.</p> <p><i>Position of Chairman</i> Peter Braun Nominated Stuart Watson, who accepted</p> <p>Call for other nominations.</p> <p>Resolution #75-08 Moved by Jerry Chomiak THAT nominations for the position of Chairman cease.</p> <p>CARRIED</p> <p>Stuart Watson was acclaimed as chairman.</p> <p><i>Position of Vice-Chairman</i> Stuart Watson nominated Jerry Chomiak, who accepted.</p> <p>Call for other nominations.</p>	

Mackenzie Regional Waste Management Commission
Minutes of November 29, 2008

1.2 Per diems Review	<p><u>Resolution #76-08</u> Moved by Peter Braun THAT nominations for the position of Vice-Chairman cease.</p> <p>CARRIED</p> <p>Jerry Chomiak was acclaimed as Vice-Chairman.</p> <p><u>Resolution #77-08</u> Moved by Jerry Chomiak THAT Policy No. 41-05 be accepted for information.</p> <p>CARRIED</p>
<u>2. ADDITIONS TO OR DELETIONS FROM THE AGENDA</u>	
	There were none.
<u>3. ADOPTION OF AGENDA</u>	
	<p><u>Resolution #78-08</u> Moved by Peter Braun THAT the agenda for the November 29, 2008 board meeting be adopted as presented.</p> <p>CARRIED</p>
<u>4. DELEGATIONS</u>	
4.1 Rod Chalifoux High Level Native Friendship Centre	<p>Rod Chalifoux explained to the Board that the insurance for the High Level Native Friendship Centre was insufficient and would not cover the cost for disposal of the building. He asked to have their tipping fees lowered or waived. Rod Chalifoux was thanked by Chairman Stuart Watson and then left the meeting.</p> <p><u>Resolution #79-08</u> Moved by Kelly Drover THAT the verbal report by Rod Chalifoux be accepted for information.</p> <p>CARRIED</p>
4.2 Rob Griffin The Groundworx Co.	<p>Rob Griffin presented ideas on recycling concrete and asphalt. Rob Griffin was thanked by Chairman Stuart Watson and then left the meeting.</p> <p><u>Resolution #80-08</u> Moved by Peter Braun THAT the presentation by Rob Griffin be accepted for information.</p> <p>CARRIED</p>
<u>5. REPORTS</u>	
5.1 Managers Report	Manager Pat Sliworsky presented his report with following addition:

Mackenzie Regional Waste Management Commission
Minutes of November 29, 2008

5.2 Financial Report as of October 31, 2008	<ul style="list-style-type: none"> • Manager Pat Sliworsky and Carrie Demkiw went to Grimshaw to attend a meeting with three other Waste Commissions and Authorities in an effort to cut costs for future use of contractors. <p><u>Resolution #81-08</u> Moved by Jerry Chomiak THAT the Manager's Report be accepted for information.</p> <p>CARRIED</p> <p><u>Resolution #82-08</u> Moved by Jerry Chomiak THAT the Financial Report be accepted for information.</p> <p>CARRIED</p>
<u>6. ADOPTION OF MINUTES</u>	
6.1 Regular Meeting of October 25, 2008	<p><u>Resolution #83-08</u> Moved by Peter Braun THAT the minutes of the October 25, 2008 Mackenzie Regional Waste Management Commission meeting be adopted as presented.</p> <p>CARRIED</p>
<u>7. BUSINESS ARISING FROM THE MINUTES</u>	
7.1 Waste Study	<p><u>Resolution #84-08</u> Moved by Jerry Chomiak THAT the waste study report be accepted for information.</p> <p>CARRIED</p>
<u>8. NEW BUSINESS</u>	
8.1 Rod Chalifoux High Level Native Friendship Centre	<p><u>Resolution #85-08</u> Moved by Jerry Chomiak THAT administration proceed with collection and send a letter to the High Level Native Friendship Centre.</p> <p>CARRIED</p>
8.2 Rob Griffin The Groundworx Co.	<p>The Board discussed the pros and cons of stock-piling and crushing concrete.</p> <p><u>Resolution #86-08</u> Moved by Jerry Chomiak THAT Administration do more research and bring it back to a</p>

Mackenzie Regional Waste Management Commission
Minutes of November 29, 2008

	meeting in the Spring. CARRIED
<u>9. CORRESPONDENCE</u>	
9.1 963 Engine Oil Analysis	<u>Resolution #87-08</u> Moved by Peter Braun THAT the report be accepted for information. CARRIED
	The meeting recessed at 11:15 a.m. The meeting reconvened at 11:26 a.m.
<u>10. NOTICE OF MOTION</u>	
	There were none.
<u>11. NEXT MEETING DATE</u>	
	The next meeting will be held February 07, 2009 at 10:00 a.m. at Stardust Motor Inn, Olivier Room.
<u>12. IN-CAMERA ITEMS</u>	
	<u>Resolution #88-08</u> Moved by Jerry Chomiak THAT the Board go in-camera at 11:28 a.m. CARRIED
	<u>Resolution #89-08</u> Moved by Jerry Chomiak THAT the Board come out of camera at 11:45 a.m. CARRIED
	The meeting recessed at 11:45 a.m. The meeting reconvened at 12:07 p.m.
12.1 Financial Services 2007	<u>Resolution #90-08</u> Moved by Kelly Drover THAT the Board accept the letter from Dean Krause as information and retain legal council and have all future official correspondence regarding this matter be directed to the legal council. In favour: 3 Opposed: 1 CARRIED
12.2 Auditor	<u>Resolution #91-08</u> Moved by Peter Braun THAT the Commission appoint Daniel M. Ringrose CA as the auditor for the Commission for a three year term.

Mackenzie Regional Waste Management Commission
Minutes of November 29, 2008

	CARRIED
<u>13. ADJOURNMENT</u>	
	<u>Resolution #74-08</u> Moved by Kelly Drover THAT the meeting be adjourned at 12:13 p.m. CARRIED

Chairman

Manager

MACKENZIE REGIONAL WASTE MANAGEMENT COMMISSION
REQUEST FOR DECISION

Issue: Uncollectible Accounts Written Off December 31, 2008

Recommendation:

THAT the Board approve the 2008 Uncollectible Accounts write-off in the amount of \$220.43 and send Emroc Drywall and Kevin Fowler to collections.

Comments:

Most are amounts challenged are because of no response to statements or phone calls. Any amounts collected from these accounts will be credited to the account. The amount budgeted for 'Uncollectible Accounts' in 2008 was \$1,000.00. Emroc Drywall paid \$250.00 (what he referred to as his calculation of the waste minus the snow in the load).

Date: February 7, 2009

Submitted By: Pat Sliworsky, Manager

Reviewed By:

**Mackenzie Regional Waste Management Commission
Recommended Write Offs
2008**

Customer	Amount	Date of Invoice	Reason
Abe Banman	26.50	February 2007	Restricted, no response to statements or phone calls
Jacob Wiebe	26.50	June 2007	Restricted, no response to statements or phone calls
Donald Moberly	26.50	July 2007	Restricted, no response to statements or phone calls
John Ruane	26.50	December 2007	Restricted, no response to statements or phone calls
3D Insulating	8.27	February 2008	Restricted, no response to statements or phone calls
Tom Sigurder	26.25	March 2008	Moved, no forwarding address
Emroc Drywall	259.38	March 2008	Paid \$250, his calculation of what he owes
Mathew Chalifoux	26.25	April 2008	Restricted, no response to statements or phone calls
Alex Appannah	26.25	May 2008	Restricted, no response to statements or phone calls
Kevin Fowler	65.16	August 2008	Restricted, no response to statements or phone calls
606862 Alberta Ltd.	27.41	September 2008	Restricted, no response to statements or phone calls

Total: 544.97

Good Morning Pat,

Thanks for taking the time to talk to me about the needs of the Mackenzie Regional Landfill.

The following is the proposal that we had talked about when we met in High Level.

With the volume, and the spread out nature of the site it would have cost any individual site an exuberant amount of money for the clean-up whether small or large. Therefore I combined the project allowing for cost sharing between 10 sites.

The combined total cost to clean all the sites that you had indicated in your email to me would be \$40,000. This would include the Mob and Demob of the Aljon Super 400 Bailer, and Magnet, and clean-up and removal of material from the sites.

For Budgeting purposes here are some examples for cost tracking:

1) Split the billing equally between the 10 sites giving a costing of \$4000 per site on a cost share basis.

2) Track the volume that comes off each site and do the costing on a per volume basis, allowing the larger sites to pay more and the smaller sites to pay less on a percentage basis.

If you have any questions about the above proposal, or any other related issue please give me a call at the office (780) 332-4013 or on my cell at (780) 618-7668.

Regards,

Wade McDonald
Owner/Manager
Peace Country Steel & Salvage Ltd.



COMPOST MATTERS!

**A two-day workshop for all those interested
in organics recycling and composting.**

Updates on:

**Regulatory
Developments!**

**Diversion
Initiatives!**

**Marketing
Programs!**

Confirmed speakers to-date include:

Brent Tarasoff

Bio Cycle Nutrient Solutions

Duncan Kenyon

Blue Source Canada

Peggy Strankman

Canadian Cattlemen's Association

Rob Olenick

Top Spray

Dr. Peter Flynn

University of Alberta

FEBRUARY 24 & 25, 2009

Sessions and Accommodations:

**Capri Hotel Trade and Convention Centre
3310 50 Ave, Red Deer, Alberta T4N 3X9**

** A block of rooms has been reserved starting at a price of \$110 + tax/night.
Please confirm your participation with The Composting Council of Canada's
event and reserve before the end of January to obtain these rates.*

Registration Fees:

	Members:	Potential Members:
Single Day:	\$125 + GST	\$175 + GST
Both Days :	\$200 + GST	\$250 + GST

**MARK YOUR CALENDARS NOW!
FULL AGENDA DETAILS TO BE
RELEASED IN EARLY JANUARY.**

For more information, please contact:

Danielle Buklis @ 1-877-571-GROW (4769) or via email at info@compost.org
Mailing Address: 16 Northumberland St., Toronto, ON M6H 1P7