

MACKENZIE REGIONAL WASTE MANAGEMENT COMMISSION

AGENDA

JUNE 27, 2009

Page

1. **CALL TO ORDER**
2. **ADDITIONS TO OR DELETIONS FROM THE AGENDA**
3. **ADOPTION OF AGENDA**
4. **DELEGATIONS**
5. **REPORTS**

3-21

5.1 Manager's Report for March, April and May 2009

22-28

5.2 Financial Reports as at May 31, 2009

6. **ADOPTION OF MINUTES**

29-33

6.1 Minutes of April 4, 2009 Regular Meeting

Page

7. BUSINESS ARISING FROM THE MINUTES

7.1 Waste Transportation

34-35

7.2 Shop Upgrade

8. NEW BUSINESS

9. CORRESPONDENCE

36

9.1 Electronics Recycling Association

37

9.2 Omni McCann

10. NOTICE OF MOTION

10.1 Vehicle Lease

11. NEXT MEETING

11.1 September 12, 2009

12. IN-CAMERA ITEMS

13. ADJOURNMENT

MACKENZIE REGIONAL WASTE MANAGEMENT COMMISSION
REQUEST FOR DECISION

Issue:
Monthly Operating Reports for March, April, and May 2009

Recommendation:
Reviewed by Manager and accept for information.

Comments:

Date: June 27, 2009
Submitted By: Pat Sliworsky, Manager
Reviewed By:

***Mackenzie Regional Waste Management Commission
Class IIB Landfill***

Monthly Operations Report and Summary

Month of March 2009

Reporting To:

Alberta Environmental and Protection

Attention: Mr. George Neurohr

10320 - 99th Street

Grande Prairie, Alberta

T8V 6J4

Phone: 780-538-5351

Mackenzie Regional Waste Management Commission
Monthly Operations Summary
Month of March 2009

1: Supervision and Operating Personnel

<u>Landfill Manager</u>	<u>Pat Sliworsky</u>	<u>MRWMC</u>
<u>Scale Operations</u>	<u>Erica Deveaux</u>	<u>MRWMC</u>
<u>Landfill Operator</u>	<u>Neville Pomeroy</u>	<u>MRWMC</u>
<u>Equipment Operator</u>	<u>Hamid Achour</u>	<u>MRWMC</u>
<u>Administrative/Financial Assistant</u>	<u>Kathy Bancarz</u>	<u>MRWMC</u>

2: Load Inspections Inspections are conducted on a random basis throughout the month

3: Daily Activities Please find attached the Summary of Daily Activities and Information
Daily journal filed at the landfill office;
Scale cleaning
Sorting and hauling recycled metals and white goods

4: Operational Problems
Ravens
Customers placing waste at incorrect locations
Customers not covering & securing loads

5: Public Complaints

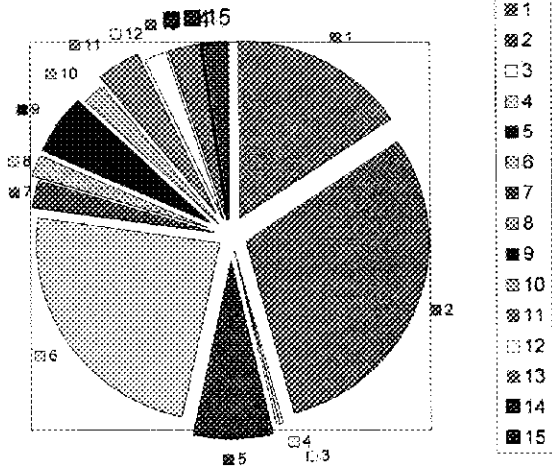
6: Special Activities Litter fences moved to appropriate locations
White goods being hauled off of the site
Metal being sorted and hauled off of the site

Mackenzie Regional Waste Management Commission
Montly Reporting Summary
Month March 2009

Monitoring Parameters	Frequency	Method	Sampling Location	Reporting Method	Attachment of Action
Weight & type of waste received	Daily, per load	Landfill Weigh Scale	Landfill Entrance	Scale Record per load	Attached Waste Received Report
Weight & type of waste removed	Daily, per load	Landfill Weigh Scale	Landfill Entrance	Scale Record per load	Attachment #2 Load Summary
Hazardous waste detection	Daily, per load	Observation and load inspection	Landfill & Entrance and disposal storage sites	Operating Record	None observed this reporting
Location of waste deposited	Daily	Per survey record	Active portion of cell	Operating Record	cell #3B
Cover Thickness	Daily	Observation	Active portion of cell	Operating Record	None, using dirt as daily cover
Working Face Width	Daily	Observation	Active portion of cell	Operating Record	75ft working face, monitored
Leachate level monitoring	Per operation plan	Measurement	Leachate storage pond or cell	Operating Record	Annual reporting
Leachate analysis	Per operation plan	Grab Sample	Leachate storage pond or cell	Operating Record	none
Volume of leachate removed	As removed	Measurement	Leachate storage pond or cell	Operating Record	none
Surface Monitoring	Surface water monitoring plan	Observation	Active portion of cell	Operating Record	Daily
Intermediate cover	When cover applied	Observation	Completion of cell	Operating Record	none
Final cover	Cell Closure	Survey cores and test pits	Completion of cell	Survey Record	none
Groundwater monitoring	Per GWP as amended	Measurement and grab sample	Groundwater monitoring wells	Operating Record	Annual reporting

Mackenzie Regional Landfill

**Waste Received
March 2009**

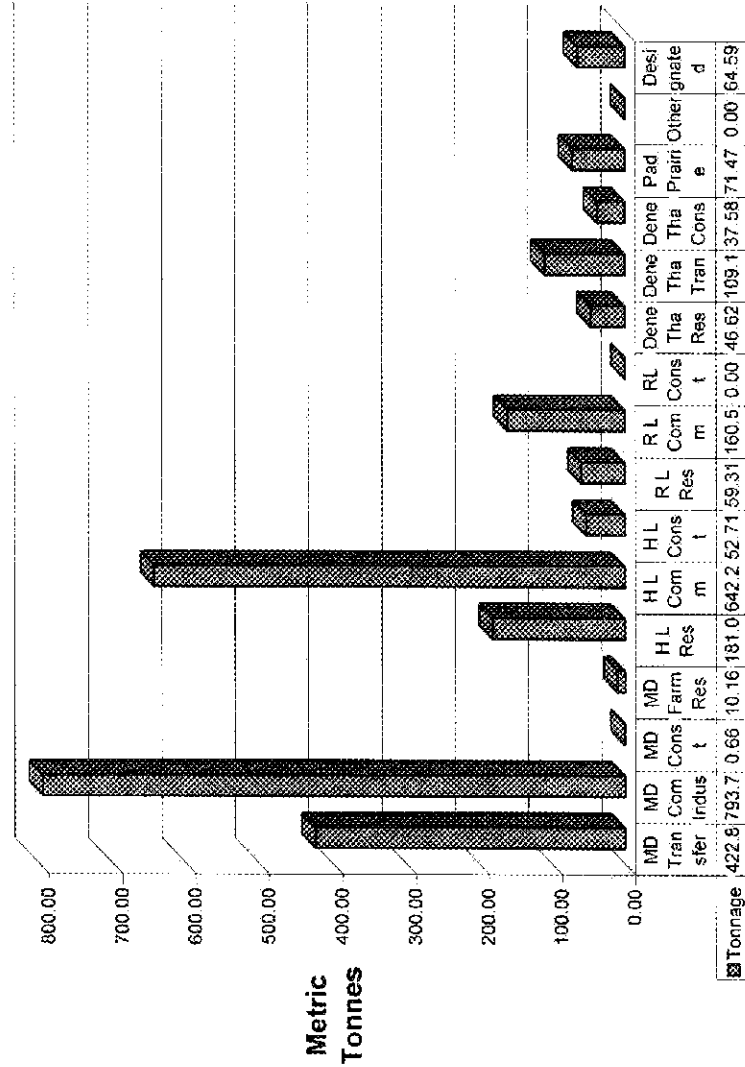


Waste Volume Legend	Metric Tonne	% of Total	Legend
MD #23 Transfer Stations	146.01	15%	1
MD #23 Commercial - Industrial	287.22	30%	2
MD #23 Construction - Demolition	0.54	0%	3
MD #23 Farm Residential	3.60	0%	4
H L Residential	64.78	7%	5
H L Commercial-Industrial	227.24	24%	6
H L Construction-Demolition	21.86	2%	7
R L Residential	18.23	2%	8
R L Commercial-Industrial	54.15	6%	9
Dene Tha Residential	17.59	2%	10
Dene Tha Transfer	37.28	4%	11
Dene Tha Const./Demo	18.40	2%	12
Paddle Transfer	24.42	3%	13
Non-Members	0.00	0%	14
Products to Designated Areas	21.74	2%	15
Total	943.06	100%	

Items not included in chart

Soil with Hydrocarbons	49.73
DIRT	8.00

Landfill Accumulated Tonnage to March 31, 2009



Mackenzie Regional Waste Management Commission
Summary of Waste Received in 2009 - Sorted by Area - per Metric Tonne

	January	February	March	April	May	June	July	August	September	October	November	December	Total
Mackenzie County	157.33	125.57	146.01										428.91
Transfer Stations	280.76	245.70	267.22										793.71
Commercial - Industrial	0.04	0.08	0.54										0.66
Construction - Demolition	4.30	2.17	3.60										10.18
Farm Residential	415.68	372.48	437.27	0.00	0.00	0.00	0.00	0.00	0.00	0.00	0.00	0.00	1,227.33
Total Mackenzie County	699.75	745.83	853.64	0.00	0.00	0.00	0.00	0.00	0.00	0.00	0.00	0.00	2,297.52
Town of High Level	63.16	53.15	64.78										181.09
Commercial - Industrial	214.01	200.08	227.24										641.33
Construction - Demolition	1.59	29.25	21.85										52.69
Total High Level	276.66	252.49	313.68	0.00	0.00	0.00	0.00	0.00	0.00	0.00	0.00	0.00	842.83
Town of Rainbow Lake	24.90	16.28	16.23										57.41
Commercial - Industrial	51.72	54.66	54.15										160.53
Construction - Demolition	0.00	0.00	0.00										0.00
Total Rainbow Lake	76.62	71.16	72.38	0.00	0.00	0.00	0.00	0.00	0.00	0.00	0.00	0.00	219.54
Deer The First Nations	13.79	15.25	17.59										46.63
Residential	36.07	35.76	37.28										109.14
Transfer Station	12.00	7.18	18.40										37.58
Construction - Demolition	61.85	59.22	73.27	0.00	0.00	0.00	0.00	0.00	0.00	0.00	0.00	0.00	195.34
Total Deer The First Nations	123.71	127.40	146.54	0.00	0.00	0.00	0.00	0.00	0.00	0.00	0.00	0.00	377.65
Transfer Station	25.00	22.05	24.42	0.00	0.00	0.00	0.00	0.00	0.00	0.00	0.00	0.00	71.47
Total Prairie Provinces	25.00	22.05	24.42	0.00	0.00	0.00	0.00	0.00	0.00	0.00	0.00	0.00	71.47
Officers	0.00	0.00	0.00	0.00	0.00	0.00	0.00	0.00	0.00	0.00	0.00	0.00	0.00
Non-members	0.00	0.00	0.00	0.00	0.00	0.00	0.00	0.00	0.00	0.00	0.00	0.00	0.00
TOTAL OTHERS	0.00	0.00	0.00	0.00	0.00	0.00	0.00	0.00	0.00	0.00	0.00	0.00	0.00
Total Waste Deposited in PH	839.37	807.27	821.32	0.00	0.00	0.00	0.00	0.00	0.00	0.00	0.00	0.00	2,468.06
Products to Designated Area	0.16	0.81	0.67										1.64
e-waste electronics	26.28	1.25	14.97										42.50
Liquid Soap	1.18	4.18	1.57										6.93
Wooden Burnable	0.00	0.00	0.00										0.00
Pesticide Containers	1.87	0.30	1.04										3.21
Staples	0.56	0.37	0.68										1.61
Tires	1.86	1.53	2.82										6.21
Other Containers	0.36	0.00	0.00										0.36
Household Hazardous Waste	0.01	0.01	0.01										0.03
Compost	0.00	0.00	0.00										0.00
Oil Filter/Oil Containers	0.00	0.00	0.00										0.00
Asbestos	0.00	0.00	0.00										0.00
Animal Carriers, responsible for	0.00	0.00	0.00										0.00
Total to Designated Areas	34.28	8.67	21.74	0.00	0.00	0.00	0.00	0.00	0.00	0.00	0.00	0.00	64.69
Products Diverted for Recycle	4.42	3.12	2.95										10.50
2009 Monthly Total by Weight	893.64	815.94	843.06	0.00	0.00	0.00	0.00	0.00	0.00	0.00	0.00	0.00	2,652.64
2008 Monthly Total by Weight	877.33	862.24	1,077.40	1,048.83	1,602.21	1,427.89	1,311.93	1,302.76	1,222.21	2,356.70	1,174.05	835.79	15,759.54
2007 Monthly Total by Weight	1,030.10	898.76	1,106.46	1,279.73	1,907.85	1,746.80	1,454.45	1,470.45	1,326.92	3,548.25	1,340.10	863.97	16,143.21
Soils with Hydrocarbons	32.59	32.43	48.73	0.00	0.00	0.00	0.00	0.00	0.00	0.00	0.00	0.00	114.75
DIRT	0	0	0	0	0	0	0	0	0	0	0	0	0

***Mackenzie Regional Waste Management Commission
Class IIB Landfill***

Monthly Operations Report and Summary

Month of April 2009

Reporting To:

Alberta Environmental and Protection

Attention: Mr. George Neurohr

10320 - 99th Street
Grande Prairie, Alberta
T8V 6J4

Phone: 780-538-5351

Mackenzie Regional Waste Management Commission
Monthly Operations Summary
Month of April 2009

1: Supervision and Operating Personnel

<u>Landfill Manager</u>	<u>Pat Sliworsky</u>	<u>MRWMC</u>
<u>Scale Operations</u>	<u>Erica Deveaux</u>	<u>MRWMC</u>
<u>Landfill Operator</u>	<u>Neville Pomeroy</u>	<u>MRWMC</u>
<u>Equipment Operator</u>	<u>Hamid Achour</u>	<u>MRWMC</u>
<u>Administrative/ Financial Assistant</u>	<u>Kathy Bancarz</u>	<u>MRWMC</u>

2: Load Inspections Inspections are conducted on a random basis throughout the month

3: Daily Activities Please find attached the Summary of Daily Activities and Information
Daily journal filed at the landfill office;
Scale cleaning
Sorting and hauling recycled metals and white goods

4: Operational Problems
Ravens & Gulls
Customers placing waste at incorrect locations
Customers not covering & securing loads

5: Public Complaints

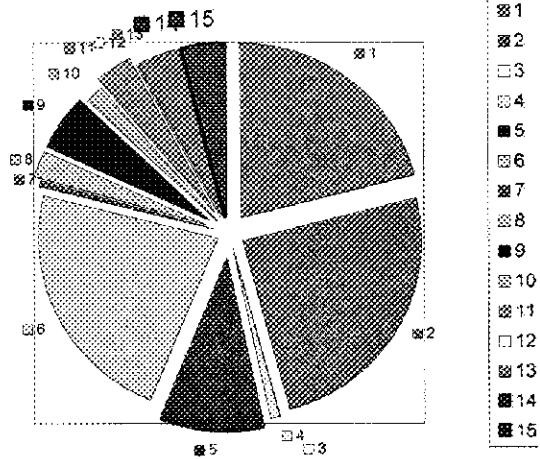
6: Special Activities Litter fences moved to appropriate locations
White goods being hauled off of the site
Metal being sorted and hauled off of the site

Mackenzie Regional Waste Management Commission
Montly Reporting Summary
Month April 2009

Monitoring Parameters	Frequency	Method	Sampling Location	Reporting Method	Attachment of Action
Weight & type of waste received	Daily, per load	Landfill Weigh Scale	Landfill Entrance	Scale Record per load	Attached Waste Received Report
Weight & type of waste removed	Daily, per load	Landfill Weigh Scale	Landfill Entrance	Scale Record per load	Attachment #2 Load Summary
Hazardous waste detection	Daily, per load	Observation and load inspection	Landfill & Entrance and disposal storage sites	Operating Record	None observed this reporting
Location of waste deposited	Daily	Per survey record	Active portion of cell	Operating Record	cell #3B
Cover Thickness	Daily	Observation	Active portion of cell	Operating Record	None, using dirt as daily cover
Working Face Width	Daily	Observation	Active portion of cell	Operating Record	75ft working face, monitored
Leachate level monitoring	Per operation plan	Measurement	Leachate storage pond or cell	Operating Record	Annual reporting
Leachate analysis	Per operation plan	Grab Sample	Leachate storage pond or cell	Operating Record	none
Volume of leachate removed	As removed	Measurement	Leachate storage pond or cell	Operating Record	none
Surface Monitoring	Surface water monitoring plan	Observation	Active portion of cell	Operating Record	Daily
Intermediate cover	When cover applied	Observation	Completion of cell	Operating Record	none
Final cover	Cell Closure	Survey cores and test pits	Completion of cell	Survey Record	none
Groundwater monitoring	Per GWP as amended	Measurement and grab sample	Groundwater monitoring wells	Operating Record	Annual reporting

Mackenzie Regional Landfill

**Waste Received
April 2009**



Waste Volume Legend	Metric Tonne	% of Total	Legend
MD #23 Transfer Stations	205.55	21%	1
MD #23 Commercial - Industrial	241.83	25%	2
MD #23 Construction - Demolition	0.35	0%	3
MD #23 Farm Residential	6.38	1%	4
H L Residential	92.51	9%	5
H L Commercial-Industrial	222.59	23%	6
H L Construction-Demolition	6.35	1%	7
R L Residential	22.90	2%	8
R L Commercial-Industrial	52.38	5%	9
Dene Tha Residential	16.13	2%	10
Dene Tha Transfer	31.29	3%	11
Dene Tha Const./Demo.	2.08	0%	12
Paddle Transfer	36.43	4%	13
Non-Members	0.00	0%	14
Products to Designated Areas	38.08	4%	15
Total	974.85	100%	

Items not included in chart

Soil with Hydrocarbons	33.76
DIRT	3.23

**Mackenzie Regional Waste Management Commission
Summary of Waste Received in 2009 - Sorted by Area - per Metric Tonne**

Mackenzie County	January	February	March	April	May	June	July	August	September	October	November	December	Total
Transfer Stations	151.38	125.51	145.07	205.55									628.50
Commercial - Industrial	260.79	245.70	297.22	241.93									1,035.54
Construction - Demolition	0.04	0.08	0.54	0.35									1.01
Farm Residential	4.36	2.17	3.60	6.36									16.54
Total Mackenzie County	416.56	373.48	437.37	454.11	0.00	0.00	0.00	0.00	0.00	0.00	0.00	0.00	1,661.48
Town of High Level													
Residential	63.15	53.15	64.76	92.51									273.56
Commercial - Industrial	254.91	200.08	227.34	222.59									864.92
Construction - Demolition	1.59	29.26	0.35	0.35									39.95
Total High Level	279.65	282.48	313.88	321.45	0.00	0.00	0.00	0.00	0.00	0.00	0.00	0.00	1,197.48
Town of Rainbow Lake													
Residential	54.59	16.49	18.23	22.90									89.71
Commercial - Industrial	51.72	54.86	54.13	52.38									212.51
Construction - Demolition	0.06	0.00	0.00	0.00									0.00
Total Rainbow Lake	0.00	71.15	72.36	75.28	0.00	0.00	0.00	0.00	0.00	0.00	0.00	0.00	296.12
Dene The First Nations													
Residential	33.78	15.25	17.54	15.13									62.75
Transfer Station	35.07	35.79	32.28	31.29									140.45
Construction - Demolition	12.00	7.18	18.40	2.05									39.66
Total Dene The	61.85	58.22	73.27	48.50	0.00	0.00	0.00	0.00	0.00	0.00	0.00	0.00	242.64
Poudre Prairie Metis Settlement													
Transfer Station	25.00	22.05	24.42	35.43									107.90
Total Poudre Prairie	25.00	22.05	24.42	35.43	0.00	0.00	0.00	0.00	0.00	0.00	0.00	0.00	107.90
Others													
Non-members	0.00	0.00	0.00	0.00									0.00
Total Others	0.00	0.00	0.00	0.00	0.00	0.00	0.00	0.00	0.00	0.00	0.00	0.00	0.00
Total Waste Deposited in PII	859.37	807.37	921.32	945.77	0.00	0.00	0.00	0.00	0.00	0.00	0.00	0.00	3,524.82
Products in Designated Area													
E-waste, electronics	0.76	0.81	0.67	1.30									2.54
Liquid Sump	28.28	1.26	14.97	20.05									64.56
Wooden Bumsble	1.18	4.19	1.57	6.88									13.83
Plastic Containers	0.00	0.00	0.00	0.00									0.00
Batteries	1.67	0.32	1.04	0.35									3.38
Tires	0.85	0.37	0.68	6.47									8.11
White Goods/Assorted metals	1.99	1.95	2.52	2.60									8.96
Household Hazardous Waste	0.30	0.00	0.00	0.00									0.30
Compost	0.01	0.01	0.01	0.15									0.18
Oil/Fire/Oil Containers	0.00	0.06	0.03	0.00									0.09
Asbestos	0.00	0.00	0.00	0.00									0.00
Animal/hair responsible for	0.03	0.00	0.25	0.00									0.28
Total to Designated Areas	34.28	6.57	24.74	36.08	0.00	0.00	0.00	0.00	0.00	0.00	0.00	0.00	103.67
Products Diverted for Recycle	4.42	3.72	4.95	11.75	0.00	0.00	0.00	0.00	0.00	0.00	0.00	0.00	23.84
2009 Monthly Total by Weight	893.65	816.94	943.06	974.88	0.00	0.00	0.00	0.00	0.00	0.00	0.00	0.00	3,627.49
2008 Monthly Total by Weight	877.33	682.24	1077.4	1045.83	1902.21	1427.88	1311.93	1522.26	1322.21	2355.7	1174.05	835.79	15,735.54
2007 Monthly Total by Weight	1,030.12	976.75	1,165.46	1,272.70	1,907.63	1,746.85	1,404.49	1,470.43	1,355.92	1,549.25	1,340.10	683.97	16,143.81
Soil with Hydrocarbons	32.56	32.43	48.73	33.76	0.00	0.00	0.00	0.00	0.00	0.00	0.00	0.00	149.47
DIRT	0	0	0	3.23	0.00	0.00	0.00	0.00	0.00	0.00	0.00	0.00	3.23

***Mackenzie Regional Waste Management Commission
Class IIB Landfill***

Monthly Operations Report and Summary

Month of May 2009

Reporting To:

Alberta Environmental and Protection

Attention: Mr. George Neurohr

10320 - 99th Street
Grande Prairie, Alberta
T8V 6J4

Phone: 780-538-5351

Mackenzie Regional Waste Management Commission
Monthly Operations Summary
Month of May 2009

1: Supervision and Operating Personnel

<u>Landfill Manager</u>	<u>Pat Sliworsky</u>	<u>MRWMC</u>
<u>Scale Operations</u>	<u>Erica Deveaux</u>	<u>MRWMC</u>
<u>Landfill Operator</u>	<u>Neville Pomeroy</u>	<u>MRWMC</u>
<u>Equipment Operator</u>	<u>Hamid Achour</u>	<u>MRWMC</u>
<u>Administrative/Financial Assistant</u>	<u>Kathy Bancarz</u>	<u>MRWMC</u>
<u>Summer Student</u>	<u>Maverick Loonskin</u>	<u>MRWMC</u>

2: Load Inspections Inspections are conducted on a random basis throughout the month

3: Daily Activities Please find attached the Summary of Daily Activities and Information
Daily journal filed at the landfill office;
Scale cleaning
Sorting and hauling recycled metals and white goods

4: Operational Problems
Ravens & Gulls
Customers placing waste at incorrect locations
Customers not covering & securing loads

5: Public Complaints

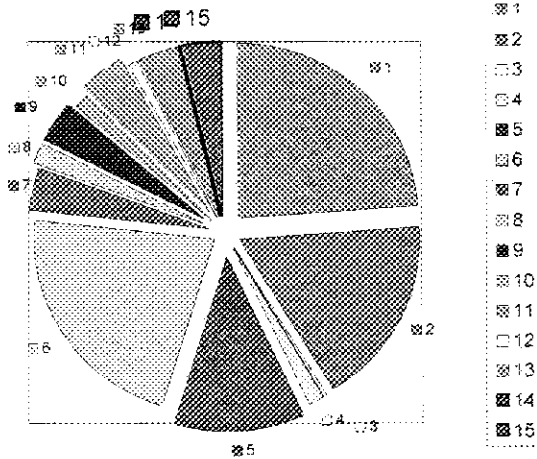
6: Special Activities Litter fences moved to appropriate locations
White goods being hauled off of the site
Metal being sorted and hauled off of the site

Mackenzie Regional Waste Management Commission
Monthly Reporting Summary
Month May 2009

Monitoring Parameters	Frequency	Method	Sampling Location	Reporting Method	Attachment of Action
Weight & type of waste received	Daily, per load	Landfill Weigh Scale	Landfill Entrance	Scale Record per load	Attached Waste Received Report
Weight & type of waste removed	Daily, per load	Landfill Weigh Scale	Landfill Entrance	Scale Record per load	Attachment #2 Load Summary
Hazardous waste detection	Daily, per load	Observation and load inspection	Landfill & Entrance and disposal storage sites	Operating Record	None observed this reporting
Location of waste deposited	Daily	Per survey record	Active portion of cell	Operating Record	Cell 3B moved to Cell 3 May 5, 2009
Cover Thickness	Daily	Observation	Active portion of cell	Operating Record	None, using dirt as daily cover
Working Face Width	Daily	Observation	Active portion of cell	Operating Record	75ft working face, monitored
Leachate level monitoring	Per operation plan	Measurement	Leachate storage pond or cell	Operating Record	Annual reporting
Leachate analysis	Per operation plan	Grab Sample	Leachate storage pond or cell	Operating Record	none
Volume of leachate removed	As removed	Measurement	Leachate storage pond or cell	Operating Record	none
Surface Monitoring	Surface water monitoring plan	Observation	Active portion of cell	Operating Record	Daily
Intermediate cover	When cover applied	Observation	Completion of cell	Operating Record	none
Final cover	Cell Closure	Survey cores and test pits	Completion of cell	Survey Record	none
Groundwater monitoring	Per GWP as amended	Measurement and grab sample	Groundwater monitoring wells	Operating Record	Annual reporting

Mackenzie Regional Landfill

**Waste Received
May 2009**



Waste Volume Legend	Metric Tonne	% of Total	Legend
MD #23 Transfer Stations	363.82	24%	1
MD #23 Commercial - Industrial	272.02	18%	2
MD #23 Construction - Demolition	3.06	0%	3
MD #23 Farm Residential	20.17	1%	4
H L Residential	179.86	12%	5
H L Commercial-Industrial	335.14	22%	6
H L Construction-Demolition	59.30	4%	7
R L Residential	29.95	2%	8
R L Commercial-Industrial	59.78	4%	9
Dene Tha Residential	23.52	2%	10
Dene Tha Transfer	60.86	4%	11
Dene Tha Const./Demo.	12.56	1%	12
Paddle Transfer	58.24	4%	13
Non-Members	0.00	0%	14
Products to Designated Areas	53.46	3%	15
Total	1531.73	100%	

Items not included in chart

Soil with Hydrocarbons	38.06
DIRT	16.04

Landfill Accumulated Tonnage to May 31, 2009



**Mackenzie Regional Waste Management Commission
Summary of Waste Received in 2009 - Sorted by Area - per Metric Tonne**

	January	February	March	April	May	June	July	August	September	October	November	December	Total
Mackenzie County	151.23	125.51	146.07	295.55	382.82								962.22
Transfer Station	280.79	246.70	287.22	241.83	272.02								1,007.56
Commercial - Industrial	0.04	0.08	0.54	0.25	3.06								4.07
Construction - Demolition	4.36	2.17	3.60	6.38	20.17								36.71
Farm Special	416.55	375.06	437.37	454.11	550.66	0.00	0.00	0.00	0.00	0.00	0.00	0.00	2,340.55
Total Mackenzie County	63.16	53.15	84.78	92.91	179.86								453.46
Town of High Level	214.91	202.08	237.24	222.56	335.14								1,169.96
Commercial - Industrial	1.60	29.26	31.86	6.26	56.30								118.30
Construction - Demolition	378.86	282.48	315.86	321.45	574.36	0.00	0.00	0.00	0.00	0.00	0.00	0.00	1,774.78
Total High Level	24.38	16.45	18.25	22.89	28.92								112.78
Town of Rainbow Lake	51.72	54.68	54.15	52.35	55.78								270.65
Commercial - Industrial	0.00	0.00	0.00	0.00	0.00								0.00
Construction - Demolition	6.00	71.15	72.38	75.28	86.73	0.00	0.00	0.00	0.00	0.00	0.00	0.00	384.26
Total Rainbow Lake	13.78	13.33	17.59	16.13	33.52								89.27
Dene The First Nations	36.97	36.79	37.28	31.28	60.46								201.28
Transfer Station	12.00	7.18	18.40	2.68	12.56								52.72
Construction - Demolition	81.85	59.32	73.27	43.60	96.54	0.00	0.00	0.00	0.00	0.00	0.00	0.00	339.78
Total Dene The First Nations	28.30	25.39	31.42	36.43	58.24								188.00
Transfer Station	28.00	27.98	24.42	36.43	58.24	0.00	0.00	0.00	0.00	0.00	0.00	0.00	188.00
Total Pacific Profile	0.00	0.00	0.00	0.00	0.00	0.00	0.00	0.00	0.00	0.00	0.00	0.00	0.00
Others	0.00	0.00	0.00	0.00	0.00	0.00	0.00	0.00	0.00	0.00	0.00	0.00	0.00
Non-members	0.00	0.00	0.00	0.00	0.00	0.00	0.00	0.00	0.00	0.00	0.00	0.00	0.00
Total Others	898.37	807.37	924.32	936.77	1,478.27	0.00	0.00	0.00	0.00	0.00	0.00	0.00	5,003.10
Total Waste Deposited in Pit	0.16	0.81	0.67	1.33	1.71								4.68
E-waste Appliances	0.16	0.81	0.67	1.33	1.71								4.68
Liquid Sludge	0.00	0.00	0.00	0.00	0.00								0.00
Wooden Burnable	1.18	4.19	1.57	6.98	17.53								31.35
Pesticide Containers	0.00	0.00	0.00	0.00	0.00								0.00
Batteries	1.87	0.32	1.04	0.31	1.98								5.52
Tires	0.58	0.37	0.68	0.47	1.02								3.05
White Consol/assorted metals	1.88	1.54	2.93	2.40	13.08								26.83
Household Appliances/Wire	0.36	0.00	0.00	0.00	0.08								0.52
Compost	0.00	0.00	0.00	0.00	0.00								0.00
Oil/Fire/Oil Containers	0.00	0.00	0.00	0.00	0.00								0.00
Ashes/soot	0.00	0.00	0.00	0.00	0.00								0.00
Animal Pellets responsible for	0.03	0.00	0.25	0.00	0.04								0.32
Total In Designated Areas	94.38	8.57	21.74	38.08	63.46	0.00	0.00	0.00	0.00	0.00	0.00	0.00	168.13
Products Diverted for Recycle	4.47	3.12	4.65	11.15	31.14	0.00	0.00	0.00	0.00	0.00	0.00	0.00	59.78
2008 Monthly Total by Weight	893.88	815.94	943.66	974.46	1,531.73	0.00	0.00	0.00	0.00	0.00	0.00	0.00	6,169.23
2008 Monthly Total by Weight	1,090.12	976.78	1,195.48	1,212.15	1,607.86	1,427.88	1,311.93	1,322.21	1,356.70	1,374.96	1,340.10	1,343.81	15,736.54
2007 Monthly Total by Weight	32.66	32.43	48.73	33.76	30.06	0.00	0.00	0.00	0.00	0.00	0.00	0.00	168.53
Soil with Hydrocarbons	0.00	0.00	0.00	0.00	0.00	0.00	0.00	0.00	0.00	0.00	0.00	0.00	0.00
DIRT	0.00	0.00	0.00	0.00	0.00	0.00	0.00	0.00	0.00	0.00	0.00	0.00	0.00

MACKENZIE REGIONAL WASTE MANAGEMENT COMMISSION
REQUEST FOR DECISION

Issue:
Financial Report

Recommendation:

Adoption of the Financial Report.

Comments:

Date: June 27, 2009

Submitted By: Pat Sliworsky, Manager

Reviewed By: Kathy Bancarz, Administrative/Financial Assistant

Mackenzie Regional Waste Management Commission
Comparative Balance Sheet
May 31, 2009

	31-May-09	31-May-08
Assets		
Current Assets		
Chequing Account	177,428.34	490,911.05
Petty Cash	100.00	100.00
Undeposited Funds	6,440.87	165.31
Safety Program Funds	216.37	1,176.37
Total Cash	184,185.58	492,352.73
Accounts Receivable	125,660.80	120,435.46
Allowance For Doubtful Accounts	(641.02)	(850.00)
GST Rebate	0.00	3,860.72
Total Receivables	125,019.78	123,446.18
Prepaid Insurance	439.66	621.86
Prepaid Land Lease	116.42	698.50
Prepaid Membership Fees	221.89	96.20
Prepaid Conference Fees	0.00	0.00
Prepaid Legal Fees	0.00	78.75
Prepaid Telephone	244.70	92.70
Prepaid Advertising	372.04	0.00
Prepaid Rental Fees	66.64	0.00
Total Prepaid Assets	1,461.35	1,588.01
Short Term Investments	406,831.23	0.00
Total Current Assets	717,497.94	617,386.92
Long Term Investments		
Term Deposit Investments	499,590.87	494,110.52
Total Long Term Investments	499,590.87	494,110.52
Capital Assets		
Building Assets	259,405.49	208,114.00
Accumulated Amortization	(133,859.54)	(124,341.77)
Net - Building Assets	125,545.95	83,772.23
Engineering Structures	2,239,971.28	2,236,671.28
Accumulated Amortization	(1,470,233.41)	(1,411,078.05)
Net - Engineering Structures	769,737.87	825,593.23
Furniture and Equipment	73,619.96	70,724.20
Accumulated Amortization	(53,750.77)	(51,724.92)
Net - Furniture and Equipment	19,869.19	18,999.28
Machinery and Equipment	635,667.83	594,329.76
Accumulated Amortization	(96,841.87)	(31,768.02)
Net - Machinery and Equipment	538,825.96	562,561.74
Total Capital Assets	1,453,978.97	1,490,926.48
TOTAL ASSETS	2,671,067.78	2,602,423.92

LIABILITIES	31-May-09	31-May-08
Current Liabilities		
Accounts Payable	10,803.38	41,881.26
Accounts Payable - Other	0.00	279.31
Credit Card Payable	337.30	3,847.98
Statedated Cheques	603.13	(53.50)
Current Portion of Long Term Debt	32,434.38	31,025.00
Accrued Insurance	0.00	318.40
Accrued Metal Recycling	0.00	2,319.00
Accrued Bin Rental	2,700.00	2,700.00
Accrued Surface Water Testing	0.00	246.00
Accrued Payroll	4,372.45	5,946.61
Accrued Utilities	0.00	195.14
EI Payable	0.00	0.00
CPP Payable	0.00	0.00
Income Tax Payable	0.00	0.00
AD&D	0.00	0.00
Dependent Life	0.00	0.00
Dental	0.00	0.00
Extended Health	0.00	0.00
Group Life	0.00	0.00
Long Term Disability	0.00	0.00
Short Term Disability	0.00	0.00
LAPP (ER) Payable	0.00	0.00
LAPP (EE) Payable	0.00	0.00
Workers Compensation Payable	0.00	0.00
Vacation Pay Payable	0.00	78.84
GST Charged on Sales	6,213.04	6,870.41
GST Paid on Purchases	(1,427.16)	(4,685.15)
GST Adjustments	0.00	0.00
ITC Adjustments	(11.45)	0.00
Total Current Liabilities	<u>56,025.07</u>	<u>90,969.30</u>
Long Term Liabilities		
Debenture Payable	318,541.00	350,975.00
Deferred Contributions - Cap. Asset	58,662.17	66,112.46
Landfill Reclamation	1,753,436.41	1,646,898.59
Total Long Term Liabilities	<u>2,130,639.58</u>	<u>2,063,986.05</u>
TOTAL LIABILITIES	<u>2,186,664.65</u>	<u>2,154,955.35</u>
EQUITY		
Equity		
Equity in Capital Assets	1,100,548.76	697,369.76
General Landfill Reserve	283,909.12	230,909.12
Total Equity	<u>1,384,457.88</u>	<u>928,278.88</u>
Retained Earnings		
Retained Earnings - Previous Year	(882,826.30)	(481,476.76)
Current Earnings	(17,228.45)	666.45
Total Retained Earnings	<u>(900,054.75)</u>	<u>(480,810.31)</u>
TOTAL EQUITY	<u>484,403.13</u>	<u>447,468.57</u>
TOTAL LIABILITIES AND EQUITY	<u>2,671,067.78</u>	<u>2,602,423.92</u>

Mackenzie Regional Waste Management Commission
Income Statement
For The Five Months Ended May 31, 2009

REVENUE	BUDGET 2009	ACTUAL 31-May-09	ACTUAL 31-May-08
Tipping Fees			
County Transfer Stations	133,610.00	49,251.07	46,145.30
County Commercial/Industrial	173,533.36	64,041.29	72,416.64
County Construction/Demolition	22,759.41	139.04	3,008.30
County Farm Residential	7,158.98	2,489.48	2,643.27
Total County Revenue	337,061.75	115,920.88	124,213.51
High Level Residential	66,551.86	25,459.07	28,999.45
High Level Commercial/Industrial	178,617.27	61,743.66	76,913.42
High Level Construction/Demolition	19,523.36	5,608.72	8,650.64
Total High Level Revenue	264,692.49	92,811.45	114,563.51
Rainbow Lake Residential	17,536.28	5,528.89	6,914.30
Rainbow Lake Commercial/Industrial	44,473.41	13,430.04	15,408.53
Total Rainbow Lake Revenue	62,009.69	18,958.93	22,322.83
Dene Tha Residential	24,901.67	10,846.95	9,842.60
Dene Tha Construction/Demolition	20,991.67	6,527.50	6,690.00
Dene Tha Transfer Station	69,645.00	25,160.88	30,038.00
Total Dene Tha Revenue	115,538.34	42,535.33	46,570.60
Paddle Prairie Transfer Station	43776.67	20,767.25	14,424.75
Non Members	1618.33	279.31	1,213.75
Contaminated Soil	30122.24	1,492.24	0.00
Total Tipping Fees	854,819.50	292,765.39	323,308.95
Other Revenue			
Return on Long-term investments	12,000.00	4,760.09	5,923.82
Interest Earned	5,000.00	652.66	8,317.95
Extra Work Charges	5,000.00	590.00	750.00
Batteries	0.00	342.00	276.00
Expense Reimbursements	0.00	0.00	1,944.93
WCB Dividends	0.00	0.00	1,176.37
AAMDC Dividends	0.00	50.13	0.00
Deferred Capital Contributions	0.00	3,104.29	3,104.29
E-Waste	0.00	2,466.70	0.00
Paint / HH Waste Recycling	0.00	1,905.35	0.00
Metal Recycling	0.00	0.00	0.00
Total Other Revenue	22,000.00	13,871.22	21,493.36
TOTAL REVENUE	876,819.50	306,636.61	344,802.31
EXPENSES			
Operating Expenses			
Accounting Fees	500.00	0.00	75.00
Administration & Service Fees	140.00	0.00	30.84
Advertising	500.00	1,066.30	354.60
Auditing Fees	14,000.00	994.50	5,300.00
Finning Maintenance / Labour	5,000.00	6,400.00	6,508.50
Flat Repairs	350.00	292.00	27.00
Oil Sampling	50.00	0.00	0.00
Steam Cleaning /Vehicle Wash	2,000.00	849.98	185.40
Vehicle Oil Changes	550.00	119.09	264.86
Welding Maintenance	15,000.00	125.00	566.82
Parts and Materials	6,000.00	4,402.48	6,750.46

	Budget	31-May-09	31-May-08
Other Labour	1,200.00	625.00	382.50
Deisel (Dyed)	35,000.00	9,445.44	14,405.14
Gas	4,500.00	1,137.17	1,844.58
Oil, Grease & Anti-freeze	3,850.00	2,078.17	1,315.17
Building & Content Insurance	762.60	414.23	147.00
Equipment Insurance	571.66	234.60	127.50
Vehicle Insurance	350.00	89.02	85.15
General Liability Insurance	1,459.44	220.90	364.89
Contributed to Landfill Closure	110,474.57	46,031.10	43,219.05
Dry Cleaning	375.00	28.25	208.25
Land Lease Agreement	750.00	291.05	0.00
Legal Fees	3,000.00	102.22	56.25
Membership / Conf. Fees	3,000.00	404.94	1,423.80
Postage & Freight	2,100.00	482.64	951.08
Rental Fees	400.00	156.35	86.90
Subscriptions & Publications	0.00	0.00	0.00
Survey for Annual Report	6,200.00	5,920.00	6,174.93
Coffee/Drinking Water Supplies	1,200.00	402.12	506.69
Janitorial Supplies	1,200.00	240.18	384.36
Office Supplies	4,000.00	1,978.97	1,822.77
Shop Supplies	2,000.00	323.33	1,333.08
Telephone & Communications	6,420.00	2,006.83	3,092.25
Tools Expense	300.00	191.68	234.32
Training and Education	1,000.00	0.00	1,271.00
Travel & Subsistance	11,000.00	2,607.26	5,396.42
Electrical	3,300.00	1,021.97	1,252.18
Heat	14,540.00	4,873.74	8,024.49
Water Tank Fills	1,500.00	669.00	565.75
Vehicle Lease	5,052.24	2,105.10	2,105.10
Total Operating Expenses	269,595.51	98,332.61	116,844.08
Payroll Expenses			
Wages and Salaries	294,007.24	116,102.35	112,993.22
Commission Members Per Diem	8,550.00	2,075.00	1,775.00
EI Expense	5,175.20	2,616.65	2,707.01
CPP Expense	14,553.36	4,981.38	5,152.64
WCB Expense	4,557.11	1,684.95	33.78
Employee Benefits	17,508.00	7,061.00	7,028.99
Pension Expense	22,398.06	10,312.94	6,137.26
Alberta Health Care	0.00	0.00	1,672.00
Vacation Pay Expense	350.00	0.00	78.84
Total Payroll Expenses	367,098.97	144,834.27	137,578.74
Site Maintenance and Repair			
Building Repair	1,000.00	3,999.21	3,892.45
Ground Water	6,740.00	0.00	0.00
Leachate	16,000.00	0.00	0.00
Landfill Contract	0.00	0.00	-10,000.00
Bin Rental	3,600.00	2,700.00	2,700.00
Recycling Expenses	13,800.00	8,349.50	5,802.20
Roads	8,000.00	0.00	6,732.20
Surface Water	250.00	0.00	246.00
Site Clean up	2,050.00	500.00	2,050.00
New Signs at the Landfill Entrance	500.00	368.00	845.00
Total Site Maintenance and Repair	51,940.00	15,916.71	12,257.85

	Budget 2009	31-May-09	31-May-08
Other Expenses			
Amortization/Depreciation	0.00	62,609.46	78,002.39
Bank & Collection Charges	0.00	6.91	93.05
Bank Reconciliation Adjustments	0.00	0.00	0.01
Interest Expense	15,407.34	0.15	-705.26
Uncollectible Accounts	500.00	0.00	0.00
Waste Hauling Study	0.00	0.00	0.00
Promotion	2,700.00	1,739.95	55.00
Safety Awards	0.00	425.00	0.00
Cleanup Rural Dump Sites	0.00	0.00	0.00
Soil Testing (Hydrocarbons)	0.00	0.00	0.00
Total Other Expenses	18,607.34	64,781.47	77,445.19
TOTAL EXPENSE	707,241.82	323,865.06	344,135.86
NET INCOME	169,577.68	(17,228.45)	666.45
Capital Expenditures			
Electric Perimeter Fence	0.00	0.00	0.00
Track Loader / Backhoe	19,746.00	0.00	0.00
816-F2 Compactor (over 10 years)	32,434.06	0.00	0.00
Office Expansion	0.00	0.00	11,375.00
Litter Fences	0.00	0.00	15,769.00
Waste Hauling Study	30,000.00	0.00	0.00
Master Plan Review (due in 2010)	3,000.00	0.00	0.00
Future Excavation of Cell 5 (over 10 yrs)	30,000.00	0.00	0.00
Office Furniture	0.00	0.00	0.00
Reclaim Monitoring Well/Cover	9,000.00	0.00	9,000.00
Heat Blankets for Propane Tanks	0.00	0.00	0.00
New Motor for 963 Track Loader	0.00	0.00	0.00
Deck by Office	3,300.00	3,300.00	0.00
Shop Insulation and Doors	25,500.00	0.00	0.00
Replace track links on 963	13,200.00	0.00	0.00
Landfill Audit (Due in 2010)	3,250.00	0.00	0.00
Total Capital Expenditures	169,430.06	3,300.00	36,144.00
Net Income - Capital Expenditures	147.62	(20,528.45)	(35,477.55)

General Landfill Reserve

	Purchased Life	Purchase Price	Amount to Reserve Each Year	No. of Years Owned to Date	Estimated Reserves Needed to Date
Buildings					
Shop	1985	156,750.00	5,225.00	23	120,175.00
Scale House	2003	40,000.00	1,333.33	5	6,666.65
Office	2008	62,700.00	2,090.00	1	2,090.00
Equipment					
Backhoe	2007	81,900.00	8,190.00	2	16,380.00
Track Loader	2007	128,250.00	12,825.00	2	25,650.00
Compactor	2008	284,200.00	28,420.00	1	28,420.00
				Total	199,381.65

General Landfill Reserve

Bear Fence	30,000.00
Master Plan Review	3,000.00
Waste Hauling Study	20,000.00
Future Excavation of Cell 5	30,000.00
Unrestricted	<u>200,909.12</u>
Total	283,909.12

MACKENZIE REGIONAL WASTE MANAGEMENT COMMISSION
REQUEST FOR DECISION

Issue:
Minutes of April 4, 2009

Recommendation:

Adoption of the minutes.

Comments:

Date: June 27, 2009

Submitted By: Pat Sliworsky, Manager

Reviewed By:



Mackenzie Regional Waste Management Commission

Regular Board Meeting
Stardust, Olivier Room
10:00 a.m.
April 04, 2009

MINUTES

In Attendance	Stuart Watson Jerry Chomiak Peter Braun Kelly Drover Carrie Demkiw	Chair, Mackenzie County Vice Chair, Town of High Level Mackenzie County Town of Rainbow Lake Town of High Level
Staff:	Pat Sliworsky Kathy Bancarz	Manager Administrative/Financial Assistant
Regrets:	Rose Cretney	Town of Rainbow Lake

1. CALL TO ORDER

Chairman Stuart Watson called the meeting to order at 10:00 a.m.

2. ADDITIONS TO OR DELETIONS FROM THE AGENDA

8.7 Contaminated Soil from Non-Members

3. ADOPTION OF AGENDA

Resolution #16-09

Moved by Peter Braun

THAT the agenda for the April 04, 2009 board meeting be adopted as amended.

CARRIED

4. DELEGATIONS

There were none.

5. REPORTS

5.1 Manager's Report

Manager Pat Sliworsky presented his report:

- Tonnage is down but not by much. To the end of February the total tonnage is only down 150 tonne.
- On March 21st, 2009 we had a very successful Darts Fun Night.
- The Auditor completed the 2008 LAPP Audit and the 2008

Financial Information Return and Financial Statements.

- We have recycled another 27.37 tonnes of tires from the Landfill.
- A request has been sent out for a STEP Grant for our summer student, and it was accepted.
- The land sale has now gone to the First Nations for approval. Marcus Ruehi is sending a letter to the First Nations explaining to them that they have until April 30, 2009 to issue any concerns.

Resolution #17-09

Moved by Kelly Drover

THAT the Manager's Report be accepted for information.

CARRIED

**5.2 Financial Report as of
February 28, 2009**

Resolution #18-09

Moved by Jerry Chomiak

THAT the Financial Report be accepted for information.

CARRIED

6. ADOPTION OF MINUTES

**6.1 Regular Meeting of
February 7, 2009**

Resolution #19-09

Moved by Jerry Chomiak

THAT the minutes of the February 7, 2009 Mackenzie Regional Waste Management Commission meeting be adopted as presented.

CARRIED

7. BUSINESS ARISING FROM THE MINUTES

**7.1 Change to the Human
Resource Policy
#47-07**

Resolution #20-09

Moved by Peter Braun

THAT the Commission accept the change to the Human Resource Policy and retro it to the beginning of 2009, as recommended by the Manager.

CARRIED

7.2 Waste Transportation

There was a discussion regarding the Commission's role in waste collection and transportation. Could the Commission organize a more efficient collection and transportation system that would equalize these costs amongst the Municipalities?

Resolution #21-09

Moved by Kelly Drover

THAT the Board direct Administration to ask each Municipality for their costs related to residential waste collection and transportation.

In favor: 4 Opposed: 1

CARRIED

Resolution #22-09

Moved by

THAT the Commission broaden the Master Plan Review, due in 2010, to include, at a separate cost, the residential waste collection and transportation study.

CARRIED

8. NEW BUSINESS

8.1 Amendments to Policies #29-05, #30-05 And #32-05

Resolution #23-09

Moved by Carrie Demkiw

THAT the Board accept the name change from 'Authority' to 'Commission' for each Policy as presented.

CARRIED

8.2 Amendment to Policy #50-06

Resolution #24-09

Moved by Carrie Demkiw

THAT Administration amend the change to the policy to reflect that it is the responsibility of the Manager.

CARRIED

8.3 Change to Call Out Directive #01-07

Resolution #25-09

Moved by Kelly Drover

THAT the Commission adopt the Call Out Directive #07-01 as amended, to set the landfill call out rate.

CARRIED

8.4 Shop Upgrade, Discussion

Resolution #26-09

Moved by Peter Braun

THAT the discussion be tabled to the next meeting.

CARRIED

8.5 Buy-in costs for First Nations, Discussion

Resolution #27-09

Moved by Kelly Drover

THAT the Manager's presentation be accepted for information.

CARRIED

8.6 Electric Bear Fence

Resolution #28-09

Moved by Jerry Chomiak

THAT the document regarding electric fence systems be accepted for information, and that Administration add \$10,000 to the bear fence reserve account in the 2010 budget.

CARRIED

**8.7 Contaminated Soil
From Non members**

Resolution #29-09
Moved by Peter Braun
THAT the rate for Non Member's contaminated soil be set at
\$20.00 per tonne.

CARRIED

9. CORRESPONDENCE

**9.1 2008 Audit Report and
Pension Plan
Accountant's Report**

The reports were handed out.
Resolution #30-09
Moved by Kelly Drover
THAT the reports be accepted for information.

CARRIED

10. NOTICE OF MOTION

There were none.

11. NEXT MEETING DATE

Resolution #31-09
Moved by Carrie Demkiw
THAT the next meeting be held June 27, 2009 at 10:00 a.m. at
Stardust Motor Inn, Olivier Room.

CARRIED

12. IN-CAMERA ITEMS

There were none.

13. ADJOURNMENT

Resolution #32-09
Moved by Kelly Drover
THAT the meeting be adjourned at 11:41 a.m.

CARRIED

Chairman

Manager

**MACKENZIE REGIONAL WASTE MANAGEMENT COMMISSION
REQUEST FOR DECISION**

Item # _____

Issue:
Shop Upgrade

Recommendation:
THAT the Board approve the planned and budgeted shop upgrade.

Manager Comments:

Date: June 27, 2009

Submitted By: Pat Sliworsky, Manager

Reviewed By:

BACKGROUND

Overview:

\$25,500.00 has been budgeted to re-insulate the shop and replace the overhead shop doors. At the April 4/09 meeting it was requested that the Administration come back with the Reserve Account amounts to determine if it was a good idea to do this work or is it better off to put this money toward replacement of the building.

Financial:

\$25,500.00 has been budgeted to re-insulate the shop and replace the overhead shop doors.

Comments:

The shop is still in good enough shape to last another 10 years, assuming we don't get any larger with our fleet of equipment. The main reason for this upgrade is to improve the energy efficiency of the building.

Alternatives:

1. Accept recommendation.
2. Place \$25,500.00 into the Building Reserve account for building replacement.

Recommended Alternative:

#1



electronic recycling association

Electronic Recycling Association

Adrian McGill
Electronic Recycling Association
1301 34th Avenue, SE Calgary, T2G1V8

14th June 2009

Hi,

I am writing to you from the Electronic Recycling Association (www.era.ca). We are a non-profit organization dedicated to reducing the impact electronic waste has on our environment. We collect unused computer equipment, refurbish it and then donate it to local charities and non-profit organizations that are in desperate need of it.

We have recently been in discussion with Doug Wright, CEO of the Alberta Recycling Management Authority (ARMA) regarding the collection of reusable computer equipment from Alberta's landfills and relevant reuse centers within the landfills. He has informed us that we can go to each of the landfills in Alberta and collect any reusable equipment which may be present.

At this stage I am just making initial contact with you to express our intent to collect useful equipment from your location in the near future. I would be extremely grateful if you could let me know if there is any specific time or date that would suit your landfill best. We will have a three ton truck at the location and will carry out the collection of equipment as quickly as possible without disrupting the landfill in any way.

If your landfill currently does not have a reuse area for electronic equipment, we would also like to place a depot bin at your location so that people can place reusable equipment there. We would periodically come to collect the equipment whenever the bin becomes full.

I would be grateful if you could provide me with a direct contact number for you so that we can communicate with you on the day of collection.

Please let me know if you have any questions or if you need any further information from me. Thank you for your time on this matter.

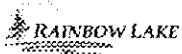
Sincerely,

Adrian McGill.....

Adrian McGill
Electronic Recycling Association
Phone: 403-262-4488

Mackenzie Regional Waste Management Commission

Box 235, High Level, AB, T0H 1Z0
Phone No. (780) 926-2958 Fax No. (780) 841-0152



Omni-McCann Consultants Ltd.
2404-96 Streets NW
Edmonton, AB T6N 1J8

Date: June 2, 2009

By Fax 780-435-2066
Original by mail

Attn.: Alan McCann, P.Geol., M.Sc.

Re: Improvements on Groundwater Wells – Mackenzie Regional Landfill

Proposal No: 10-2009

Dear Sir:

This letter is to inform you that your firm is the successful bidder for the above noted project for an upset price of **\$8,000** (plus GST).

It is my understanding that you will contact myself at the Landfill and will coordinate your site activities with me.

If you have any further questions, please contact me at the Landfill at 780-926-2958.

Sincerely

Pat Sliworsky
Manager

cc: Mackenzie Regional Waste Management Commission

