

MACKENZIE REGIONAL WASTE MANAGEMENT COMMISSION

AGENDA

JUNE 4, 2010

Page	
	1. CALL TO ORDER
	2. ADDITIONS TO OR DELETIONS FROM THE AGENDA
	3. ADOPTION OF AGENDA
	4. DELEGATIONS
	5. REPORTS
3-15	5.1 Manager's Reports
16-22	5.2 Financial Reports
	6. ADOPTION OF MINUTES
23-27	6.1 Minutes of April 10, 2010
	7. BUSINESS ARISING FROM THE MINUTES
	7.1 Waste Study

Page

7. BUSINESS ARISING FROM THE MINUTES

7.2 GreenFill Proposal

28-30

8. NEW BUSINESS

8.1 Policy No. 13-05 Budget Development & Approval

8.2 Track Loader

31-32

9. CORRESPONDENCE

9.1 MLA Response

33

9.2 Fountain Tire

10. NOTICE OF MOTION

11. NEXT MEETING

11.1 September 18, 2010

12. IN-CAMERA ITEMS

13. ADJOURNMENT

MACKENZIE REGIONAL WASTE MANAGEMENT COMMISSION
REQUEST FOR DECISION

Issue:
Monthly Operating Reports for March & April 2010

Recommendation:
Reviewed by Manager and accept for information.

Comments:

Date: June 4, 2010

Submitted By: Pat Sliworsky, Manager

Reviewed By:

***Mackenzie Regional Waste Management Commission
Class IIB Landfill***

Monthly Operations Report and Summary

Month of March 2010

Reporting To:

**Alberta Environmental and Protection
Attention: Mr. George Neurohr**

10320 - 99th Street
Grande Prairie, Alberta
T8V 6J4

Phone: 780-538-5351

Mackenzie Regional Waste Management Commission
Monthly Operations Summary
Month of March 2010

1: Supervision and Operating Personnel

<u>Landfill Manager</u>	<u>Pat Sliworsky</u>	<u>MRWMC</u>
<u>Landfill Operator</u>	<u>Neville Pomeroy</u>	<u>MRWMC</u>
<u>Equipment Operator</u>	<u>Hamid Achour</u>	<u>MRWMC</u>
<u>Administrative/Financial Assistant</u>	<u>Kathy Bancarz</u>	<u>MRWMC</u>

2: Load Inspections Inspections are conducted on a random basis throughout the month

3: Daily Activities Please find attached the Summary of Daily Activities and Information
Daily journal filed at the landfill office;
Scale cleaning
Sorting and hauling recycled metals and white goods

4: Operational Problems
Ravens
Customers placing waste at incorrect locations
Customers not covering & securing loads

5: Public Complaints

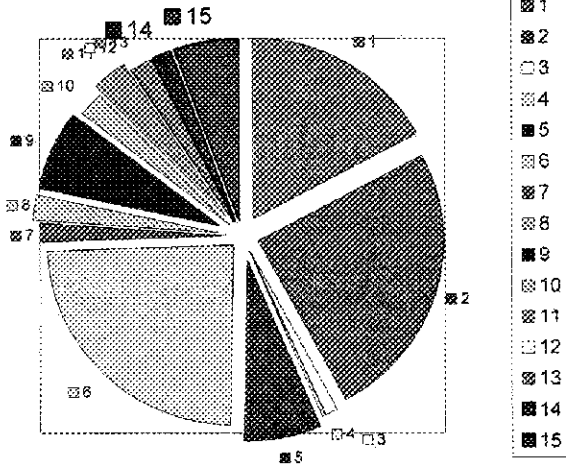
6: Special Activities Litter fences moved to appropriate locations
White goods being hauled off of the site
Metal being sorted and hauled off of the site

**Mackenzie Regional Waste Management Commission
 Montly Reporting Summary
 Month March 2010**

Monitoring Parameters	Frequency	Method	Sampling Location	Reporting Method	Attachment of Action
Weight & type of waste received	Daily, per load	Landfill Weigh Scale	Landfill Entrance	Scale Record per load	Attached Waste Received Report
Weight & type of waste removed	Daily, per load	Landfill Weigh Scale	Landfill Entrance	Scale Record per load	Attachment #2 Load Summary
Hazardous waste detection	Daily, per load	Observation and load inspection	Landfill & Entrance and disposal storage sites	Operating Record	None observed this reporting
Location of waste deposited	Daily	Per survey record	Active portion of cell	Operating Record	Cell 3B
Cover Thickness	Daily	Observation	Active portion of cell	Operating Record	None, using dirt as daily cover
Working Face Width	Daily	Observation	Active portion of cell	Operating Record	75ft working face, monitored
Leachate level monitoring	Per operation plan	Measurement	Leachate storage pond or cell	Operating Record	Annual reporting
Leachate analysis	Per operation plan	Grab Sample	Leachate storage pond or cell	Operating Record	none
Volume of leachate removed	As removed	Measurement	Leachate storage pond or cell	Operating Record	none
Surface Monitoring	Surface water monitoring plan	Observation	Active portion of cell	Operating Record	Daily
Intermediate cover	When cover applied	Observation	Completion of cell	Operating Record	none
Final cover	Cell Closure	Survey cores and test pits	Completion of cell	Survey Record	none
Groundwater monitoring	Per GWP as amended	Measurement and grab sample	Groundwater monitoring wells	Operating Record	Annual reporting

Mackenzie Regional Landfill

**Waste Received
March 2010**

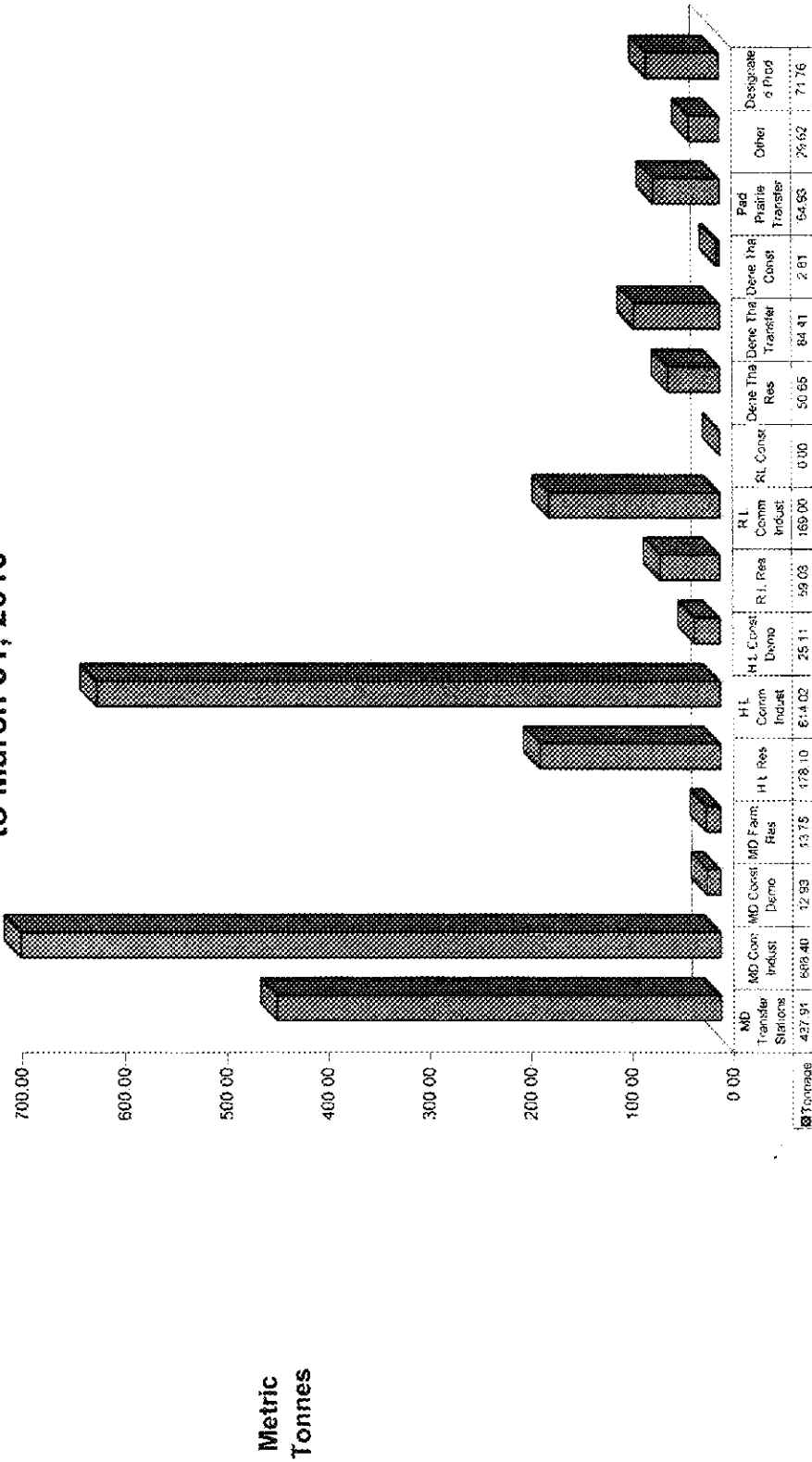


Waste Volume Legend	Metric Tonne	% of Total	Legend
MD #23 Transfer Stations	173.39	17%	1
MD #23 Commercial - Industrial	250.92	25%	2
MD #23 Construction - Demolition	10.03	1%	3
MD #23 Farm Residential	3.93	0%	4
H L Residential	67.78	7%	5
H L Commercial-Industrial	241.23	24%	6
H L Construction-Demolition	16.67	2%	7
R L Residential	21.97	2%	8
R L Commercial-Industrial	72.27	7%	9
Dene Tha Residential	22.74	2%	10
Dene Tha Transfer	30.28	3%	11
Dene Tha Const./Demo	0.00	0%	12
Paddle Transfer	20.64	2%	13
Non-Members	17.27	2%	14
Products to Designated Areas	55.04	5%	15
Total	1004.15	100%	

Items not included in chart

Soil with Hydrocarbons	37.85
DIRT	0.00

Landfill Accumulated Tonnage to March 31, 2010



**Mackenzie Regional Waste Management Commission
Summary of Waste Received in 2010- Sorted by Area - per Metric Tonne**

	January	February	March	April	May	June	July	August	September	October	November	December	Total
Mackenzie County	151.67	112.65	179.39										437.91
Transfer Stations	194.78	242.70	250.92										688.40
Commercial - Industrial	0.00	0.00	10.03										12.93
Construction - Demolition	5.98	3.64	3.93										13.73
Farm Residential	382.63	362.09	438.27	0.00	0.00	0.00	0.00	0.00	0.00	0.00	0.00	0.00	1,152.96
Town of High Level	57.37	57.97	57.76										173.10
Residential	190.32	193.67	241.33										625.32
Commercial - Industrial	6.36	2.19	16.67										25.11
Construction - Demolition	243.85	247.72	325.68	0.00	0.00	0.00	0.00	0.00	0.00	0.00	0.00	0.00	817.23
Town of Rainbow Lake	13.28	16.78	21.97										52.03
Residential	46.59	49.14	72.27										168.00
Commercial - Industrial	0.00	0.00	0.00										0.00
Construction - Demolition	66.87	66.93	94.24	0.00	6.00	6.00	0.00	6.00	0.00	0.00	0.00	0.00	228.53
Delta The First Nations	14.16	13.73	22.74										50.63
Residential	25.01	29.12	30.28										84.41
Transfer Station	0.97	1.94	0.00										2.91
Construction - Demolition	40.16	24.69	43.02	0.00	0.00	0.00	0.00	0.00	0.00	0.00	0.00	0.00	137.87
Paddle Prairie Metis Settlement	20.97	20.33	20.82										62.12
Transfer Station	20.97	20.33	20.82	0.00	0.00	0.00	0.00	0.00	0.00	0.00	0.00	0.00	62.12
Total Prairie Proofs	3.90	3.45	37.27	0.00	0.00	0.00	0.00	0.00	0.00	0.00	0.00	0.00	25.62
Non-members	748.38	743.18	849.11	0.00	0.00	0.00	0.00	0.00	0.00	0.00	0.00	0.00	2,430.67
Total Waste Deposited in Oil	0.14	0.04	0.07										0.25
Products to Designated Area	0.00	0.00	0.00										0.00
E-waste Electronics	0.00	0.00	0.00										0.00
Liquid Sludge	0.00	0.00	0.00										0.00
Wooden Bulbrite	0.00	0.00	0.00										0.00
Pesticide Containers	0.15	0.00	0.00										0.15
Batteries	2.07	0.92	1.39										4.38
Tires	3.25	2.27	3.78										9.30
White Goods/Assorted Metals	0.00	0.00	0.00										0.00
HH Waste & Paint	0.00	0.00	0.00										0.00
Compost	0.00	0.00	0.00										0.00
Oil Filter/Oil Containers	0.00	0.00	0.00										0.00
Aluminum	0.00	0.00	0.00										0.00
Animal/hauler's responsibility	0.00	0.00	0.00										0.00
Total to Designated Areas	6.35	10.37	55.04	0.00	0.00	0.00	0.00	0.00	0.00	0.00	0.00	0.00	71.76
Products Diverted for Recycle	5.61	8.62	16.94	0.00	0.00	0.00	0.00	0.00	0.00	0.00	0.00	0.00	33.07
2010 Monthly Total by Weight	734.73	763.55	1,004.15	0.00	0.00	0.00	0.00	0.00	0.00	0.00	0.00	0.00	2,502.43
2008 Monthly Total by Weight	893.65	815.94	943.05	574.85	1,531.73	1,236.24	1,274.90	1,143.22	1,226.92	1,226.69	862.40	798.45	13,081.64
2008 Monthly Total by Weight	877.33	962.54	1,077.40	1,049.53	1,802.21	1,427.86	1,311.93	1,322.26	1,322.21	2,355.70	1,172.05	836.79	15,739.94
Soil with Hydrocarbons	28.88	23.98	37.85										90.71
DIRT	0	0	0										0.00

***Mackenzie Regional Waste Management Commission
Class IIB Landfill***

Monthly Operations Report and Summary

Month of April 2010

Reporting To:

Alberta Environmental and Protection

Attention: Mr. George Neurohr

10320 - 99th Street
Grande Prairie, Alberta
T8V 6J4

Phone: 780-538-5351

Mackenzie Regional Waste Management Commission
Monthly Operations Summary
Month of April 2010

1: Supervision and Operating Personnel

<u>Landfill Manager</u>	<u>Pat Sliworsky</u>	<u>MRWMC</u>
<u>Landfill Operator</u>	<u>Neville Pomeroy</u>	<u>MRWMC</u>
<u>Equipment Operator</u>	<u>Hamid Achour</u>	<u>MRWMC</u>
<u>Administrative/Financial Assistant</u>	<u>Kathy Bancarz</u>	<u>MRWMC</u>

2: Load Inspections Inspections are conducted on a random basis throughout the month

3: Daily Activities Please find attached the Summary of Daily Activities and Information
Daily journal filed at the landfill office;
Scale cleaning
Sorting and hauling recycled metals and white goods

4: Operational Problems
Ravens & Gulls
Customers placing waste at incorrect locations
Customers not covering & securing loads

5: Public Complaints

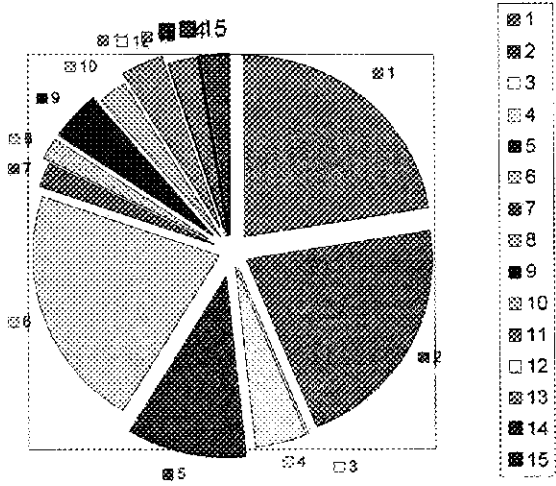
6: Special Activities Litter fences are moved to appropriate locations
White goods are being stored for future recycling off site
Metal is being stored for future recycling off site

**Mackenzie Regional Waste Management Commission
 Monthly Reporting Summary
 Month April 2010**

Monitoring Parameters	Frequency	Method	Sampling Location	Reporting Method	Attachment of Action
Weight & type of waste received	Daily, per load	Landfill Weigh Scale	Landfill Entrance	Scale Record per load	Attached Waste Received Report
Weight & type of waste removed	Daily, per load	Landfill Weigh Scale	Landfill Entrance	Scale Record per load	Attachment #2 Load Summary
Hazardous waste detection	Daily, per load	Observation and load inspection	Landfill & Entrance and disposal storage sites	Operating Record	None observed this reporting
Location of waste deposited	Daily	Per survey record	Active portion of cell	Operating Record	Cell 3B
Cover Thickness	Daily	Observation	Active portion of cell	Operating Record	None, using dirt as daily cover
Working Face Width	Daily	Observation	Active portion of cell	Operating Record	75ft working face, monitored
Leachate level monitoring	Per operation plan	Measurement	Leachate storage pond or cell	Operating Record	Annual reporting
Leachate analysis	Per operation plan	Grab Sample	Leachate storage pond or cell	Operating Record	none
Volume of leachate removed	As removed	Measurement	Leachate storage pond or cell	Operating Record	none
Surface Monitoring	Surface water monitoring plan	Observation	Active portion of cell	Operating Record	Daily
Intermediate cover	When cover applied	Observation	Completion of cell	Operating Record	none
Final cover	Cell Closure	Survey cores and test pits	Completion of cell	Survey Record	none
Groundwater monitoring	Per GWP as amended	Measurement and grab sample	Groundwater monitoring wells	Operating Record	Annual reporting

Mackenzie Regional Landfill

**Waste Received
April 2010**

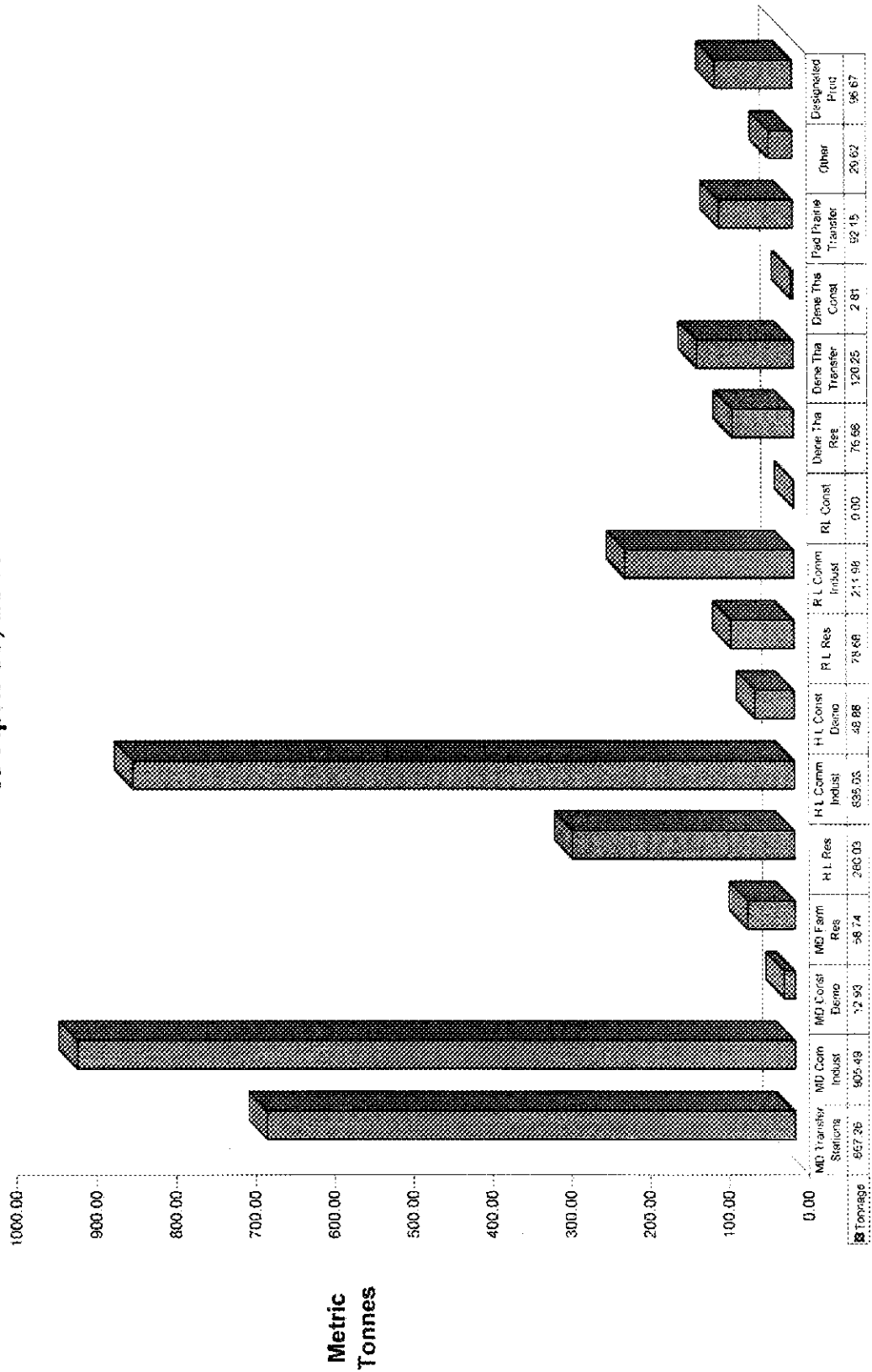


Waste Volume Legend	Metric Tonne	% of Total	Legend
MD #23 Transfer Stations	229.35	23%	1
MD #23 Commercial - Industrial	217.10	21%	2
MD #23 Construction - Demolition	0.00	0%	3
MD #23 Farm Residential	44.99	4%	4
H L Residential	101.93	10%	5
H L Commercial-Industrial	221.01	22%	6
H L Construction-Demolition	23.77	2%	7
R L Residential	19.65	2%	8
R L Commercial-Industrial	42.98	4%	9
Dene Tha Residential	26.01	3%	10
Dene Tha Transfer	35.84	4%	11
Dene Tha Const./Demo.	0.00	0%	12
Paddle Transfer	27.22	3%	13
Non-Members	0.00	0%	14
Products to Designated Areas	24.91	2%	15
Total	1014.76	100%	

Items not included in chart

Soil with Hydrocarbons	100.71
DIRT	5.03

Landfill Accumulated Tonnage to April 30, 2010



Source of Waste

**Mackenzie Regional Waste Management Commission
Summary of Waste Received in 2010 - Sorted by Area - per Metric Tonne**

	January	February	March	April	May	June	July	August	September	October	November	December	Total
Mackenzie County	151.87	112.65	173.39	229.35									567.25
Transfer Stations													906.49
Commercial - Industrial	194.78	242.70	250.92	217.10									42.93
Construction - Demolition		0.00	2.90	10.03									58.74
Farm Residential	5.98	3.84	3.93	44.98									1,694.43
Total Mackenzie County	352.63	362.09	436.27	487.44	0.00	0.00	0.00	0.00	0.00	0.00	0.00	0.00	1,694.43
Town of High Level													
Residential	67.37	62.67	67.76	101.93									260.03
Commercial - Industrial	180.12	192.67	241.23	221.01									855.03
Construction - Demolition		2.08	16.67	23.77									42.88
Total High Level	243.85	247.72	325.66	346.71	0.00	0.00	0.00	0.00	0.00	0.00	0.00	0.00	1,163.94
Town of Rainbow Lake													
Residential	18.28	18.78	21.97	19.85									78.88
Commercial - Industrial	48.59	48.14	72.27	42.98									211.98
Construction - Demolition		0.00	0.00	0.00									0.00
Total Rainbow Lake	66.87	66.92	94.24	62.83	0.00	0.00	0.00	0.00	0.00	0.00	0.00	0.00	290.86
Dene Tha First Nations													
Residential	4.18	13.73	22.74	26.01									76.66
Transfer Station	25.01	29.12	30.28	35.84									120.25
Construction - Demolition	0.97	1.94	0.00	0.00									2.81
Total Dene Tha	40.16	44.69	53.02	61.85	0.00	0.00	0.00	0.00	0.00	0.00	0.00	0.00	199.72
Paddle Prairie Metis Settlement													
Transfer Station	20.97	23.32	20.64	27.22									92.15
Total Paddle Prairie	20.97	23.32	20.64	27.22	0.00	0.00	0.00	0.00	0.00	0.00	0.00	0.00	92.15
Others													
Non-members	3.90	8.45	17.27	0.00									29.62
Total Others	3.90	8.45	17.27	0.00	0.00	0.00	0.00	0.00	0.00	0.00	0.00	0.00	29.62
Total Waste Deposited in Pit	725.35	752.15	949.11	989.85	0.00	0.00	0.00	0.00	0.00	0.00	0.00	0.00	3,420.62
Products to Designated Area													
E-waste, electronics	0.14	3.04	0.07	3.34									6.59
Liquid Slump	0.00	0.63	34.67	1.23									36.48
Wooden Bumsable	0.65	0.67	1.18	8.24									10.94
Pesticide Containers	0.00	0.00	0.00	0.00									0.00
Batteries	0.15	2.99	0.43	0.00									3.57
Tires	2.07	0.32	1.98	2.89									6.66
White Goods/Assorted metals	3.25	2.27	3.78	8.14									17.44
HH Waste & Paint	0.03	0.22	0.31	0.00									0.56
Compost	0.00	0.00	13.17	0.74									13.91
Oil Filter/Oil Containers	0.00	0.00	0.01	0.32									0.33
Asbestos	0.00	0.00	0.00	0.00									0.00
Animals-Haulers responsible for													0.19
Total to Designated Areas	6.35	10.37	56.04	24.91	0.00	0.00	0.00	0.00	0.00	0.00	0.00	0.00	96.87
Products Diverted for Recycle	5.61	6.62	18.84	15.43									48.50
2010 Monthly Total by Weight	734.73	763.65	1,004.15	1,014.76	0.00	0.00	0.00	0.00	0.00	0.00	0.00	0.00	3,517.19
2009 Monthly Total by Weight	833.63	815.94	943.06	974.83	1,531.73	1,266.24	1,274.90	1,143.22	1,268.22	1,228.56	882.40	788.45	13,081.64
2008 Monthly Total by Weight	877.33	982.24	1,077.40	1,095.53	1,802.21	1,427.88	1,311.93	1,522.26	1,322.21	2,356.70	1,174.06	835.79	15,739.54
Soil with Hydrocarbons	28.88	23.98	37.85	100.71									191.42
DIRT	0	0	0	5.03									5.03

MACKENZIE REGIONAL WASTE MANAGEMENT COMMISSION
REQUEST FOR DECISION

Issue:
Financial Report

Recommendation:

Adoption of the Financial Report.

Comments:

Date: June 4, 2010

Submitted By: Pat Sliworsky, Manager

Reviewed By: Kathy Bancarz, Administrative/Financial Assistant

**Mackenzie Regional Waste Management Commission
Comparative Balance Sheet
April 30, 2010**

	30-Apr-10	30-Apr-09
Assets		
Current Assets		
Chequing Account	181,142.39	190,849.02
Short Term Investments	437,674.15	406,831.23
Petty Cash	100.00	100.00
Undeposited Funds	0.00	0.00
Safety Program Funds	216.37	216.37
Total Cash	619,132.91	597,996.62
Accounts Receivable	71,755.76	77,317.99
Allowance For Doubtful Accounts	(641.02)	(641.02)
Accrued Return on Investments	0.00	0.00
Security Deposits	700.00	0.00
Total Receivables	71,814.74	76,676.97
Prepaid Insurance	943.60	631.40
Prepaid Land Lease	873.13	873.13
Prepaid Promotion	80.00	0.00
Prepaid Membership Fees	220.89	255.73
Prepaid Conference Fees	0.00	0.00
Prepaid Telephone	349.40	94.70
Prepaid Advertising	0.00	372.04
Prepaid Rental Fees	113.31	98.31
Total Prepaid Assets	2,580.33	2,325.31
Inventory Assets, Composters	160.00	0.00
Total Current Assets	693,687.98	676,998.90
Long Term Investments		
Term Deposit Investments	520,463.59	499,590.87
Total Long Term Investments	520,463.59	499,590.87
Capital Assets		
Building Assets	294,653.74	259,405.49
Accumulated Amortization	(150,435.28)	(133,138.96)
Net - Building Assets	144,218.46	126,266.53
Engineering Structures	2,251,683.78	2,236,671.28
Accumulated Amortization	(1,544,470.78)	(1,463,832.54)
Net - Engineering Structures	707,213.00	772,838.74
Furniture and Equipment	73,619.96	73,619.96
Accumulated Amortization	(55,025.52)	(53,634.87)
Net - Furniture and Equipment	18,594.44	19,985.09
Machinery and Equipment	711,619.22	635,667.83
Accumulated Amortization	(158,361.31)	(91,557.30)
Net - Machinery and Equipment	553,257.91	544,110.53
Total Capital Assets	1,423,283.81	1,463,200.89

	30-Apr-10	30-Apr-09
TOTAL ASSETS	<u>2,637,435.38</u>	<u>2,639,790.66</u>
LIABILITIES		
Current Liabilities		
Accounts Payable	8,564.55	9,405.22
Accounts Payable - Other	547.39	0.00
Credit Card Payable	1,797.30	1,194.49
Staledated Cheques	0.00	603.13
Current Portion of Long Term Debt	33,907.53	32,434.38
Accrued Audit Fees	0.00	0.00
Accrued Bin Rental	0.00	2,400.00
Accrued Equipment Repair Expense	476.95	0.00
Accrued Steamcleaning Expense	0.00	595.00
Accrued Payroll	2,777.96	9,410.17
Accrued Utilities	462.70	247.28
Accrued WCB Premiums	0.00	0.00
EI Payable	0.00	0.00
CPP Payable	0.00	0.00
Income Tax Payable	0.00	0.00
AD&D	0.00	0.00
Dependent Life	0.00	0.00
Dental	0.00	0.00
Extended Health	0.00	0.00
Group Life	(0.01)	0.00
Long Term Disability	0.00	0.00
Short Term Disability	0.00	0.00
LAPP (ER) Payable	0.00	0.00
LAPP (EE) Payable	0.00	0.00
Workers Compensation Payable	0.00	0.00
Vacation Pay Payable	0.00	0.00
GST Charged on Sales	2,550.94	2,396.14
GST Paid on Purchases	(1,009.35)	(768.31)
GST Adjustments	0.00	0.00
ITC Adjustments	0.00	0.00
Total Current Liabilities	<u>50,075.96</u>	<u>57,917.50</u>
Long Term Liabilities		
Debenture Payable	284,633.79	318,541.00
Deferred Contributions - Cap. Asset	51,756.93	59,283.04
Landfill Reclamation - Funded	520,463.59	499,590.87
Landfill Reclamation - Unfunded	1,254,835.45	1,244,639.32
Total Long Term Liabilities	<u>2,111,689.76</u>	<u>2,122,054.23</u>
TOTAL LIABILITIES	<u>2,161,765.72</u>	<u>2,179,971.73</u>
EQUITY		
Equity		
Equity in Capital Assets	1,100,548.76	1,100,548.76
General Landfill Reserve	270,267.52	283,909.12
Total Equity	<u>1,370,816.28</u>	<u>1,384,457.88</u>

	30-Apr-10	30-Apr-09
Unrestricted Net Assets		
Previous Year	(864,757.19)	(882,826.30)
Current	(30,389.43)	(41,812.65)
Total Unrestricted Net Assets	<u>(895,146.62)</u>	<u>(924,638.95)</u>
TOTAL EQUITY	<u>475,669.66</u>	<u>459,818.93</u>
TOTAL LIABILITIES AND EQUITY	<u>2,637,435.38</u>	<u>2,639,790.66</u>

**Mackenzie Regional Waste Management Commission
Comparative Income Statement
For The Four Months Ended April 30, 2010**

REVENUE	BUDGET 2010	ACTUAL 30-Apr-10	ACTUAL 30-Apr-09
Tipping Fees			
County Transfer Stations	130,119.40	32,862.89	31,332.98
County Commercial/Industrial	145,669.14	44,150.98	50,629.55
County Construction/Demolition	2,122.23	636.81	50.39
County Farm Residential	5,971.79	3,214.53	1,141.16
Total County Revenue	283,882.56	80,865.21	83,154.08
High Level Residential	60,072.46	16,046.08	15,464.12
High Level Commercial/Industrial	145,868.47	42,894.56	44,902.84
High Level Construction/Demolition	22,858.81	2,545.03	2,866.70
Total High Level Revenue	228,799.74	61,485.67	63,233.66
Rainbow Lake Residential	16,132.15	3,875.01	4,048.84
Rainbow Lake Commercial/Industrial	39,163.96	10,440.08	10,485.87
Total Rainbow Lake Revenue	55,296.11	14,315.09	14,534.71
Dene Tha Residential	30,755.58	8,772.65	7,887.90
Dene Tha Construction/Demolition	15,328.60	2,210.05	4,957.50
Dene Tha Transfer Station	71,707.01	16,460.41	17,553.88
Total Dene Tha Revenue	117,791.19	27,443.11	30,399.28
Paddle Prairie Transfer Station	53,059.01	12,586.31	13,487.25
Non Members	20,717.14	4,088.30	279.31
Contaminated Soil	4,324.94	2,142.28	1,187.76
Total Tipping Fees	763,870.69	202,925.97	206,276.05
Other Revenue			
Funds From Reserve Account	48,600.00	0.00	0.00
Return on Long-term Investments	8,915.55	(1,931.00)	4,760.09
Interest Earned	805.21	56.90	614.76
Extra Work Charges	2,633.45	655.00	190.00
Batteries	1,878.55	0.00	194.00
Expense Reimbursements	9,243.89	1,365.25	0.00
STEP Program	2,450.00	0.00	0.00
WCB Dividends	349.87	0.00	0.00
AAMDC Dividends	50.13	279.12	50.13
Deferred Capital Contributions	7,450.29	2,483.42	2,483.42
Composter Sales	146.78	73.39	0.00
E-Waste	4,263.71	1,365.40	1,549.90
Paint / HH Waste Recycling	2,078.56	0.00	0.00
Total Other Revenue	88,865.99	4,347.48	9,842.30
TOTAL REVENUE	852,736.68	207,273.45	216,118.35
EXPENSES			
Operating Expenses			
Administration & Service Fees	135.00	0.00	0.00
Advertising	1,200.00	498.00	1,044.20
Auditing Fees	15,500.00	0.00	994.50
Finning Maintenance / Labour	2,500.00	1,192.50	4,960.00
Fiat Repairs	720.00	195.00	227.00
Oil Sampling	25.00	0.00	0.00
Steam Cleaning /Vehicle Wash	2,000.00	64.18	669.98
Vehicle Oil Changes	400.00	135.40	119.09

	Budget 2010	30-Apr-10	30-Apr-09
Welding Maintenance	8,000.00	63.82	125.00
Parts and Materials	10,000.00	2,411.45	3,582.36
Other Labour	1,500.00	323.00	494.00
Deisel (Dyed)	25,000.00	6,861.31	8,530.49
Gas	3,000.00	920.92	972.50
Oil, Grease & Anti-freeze	2,000.00	952.37	1,774.27
Building & Content Insurance	1,265.79	427.63	331.39
Equipment Insurance	1,144.64	287.68	187.68
Vehicle Insurance	237.62	72.68	71.22
General Liability Insurance	530.16	172.68	176.72
Contributed to Landfill Closure	52,949.70	17,649.92	36,824.88
Dry Cleaning	200.00	152.90	28.25
Land Lease Agreement	698.52	232.84	232.84
Legal Fees	105.00	101.72	102.22
Membership / Conf. Fees	1,000.00	878.74	371.10
Postage & Freight	2,500.00	399.09	457.66
Rental Fees	400.00	687.16	126.68
Survey for Annual Report	6,000.00	5,836.00	5,920.00
Coffee/Drinking Water Supplies	1,200.00	443.42	364.12
Janitorial Supplies	800.00	165.73	186.81
Office Supplies	2,800.00	820.31	2,240.21
Shop Supplies	1,500.00	140.24	296.04
Telephone & Communications	4,800.00	1,695.29	1,538.68
Tools Expense	400.00	0.00	191.68
Training and Education	1,000.00	0.00	0.00
Travel & Subsistance	7,000.00	1,987.64	2,540.12
Electrical	2,650.00	1,064.12	1,208.91
Heat	10,000.00	2,716.50	4,873.74
Water Tank Fills	1,560.00	564.00	531.50
Vehicle Lease	7,707.48	2,569.16	1,684.06
Total Operating Expenses	<u>180,428.91</u>	<u>52,683.40</u>	<u>83,979.92</u>
Payroll Expenses			
Wages and Salaries	274,611.54	92,372.17	89,296.20
Commission Members Per Diem	8,550.00	2,950.00	2,075.00
EI Expense	2,999.71	2,135.01	1,906.53
CPP Expense	10,892.82	4,096.91	3,629.86
WCB Expense	4,966.55	1,859.63	1,684.95
Employee Benefits	14,841.24	6,020.05	5,648.80
Pension Expense	22,596.87	9,161.62	7,476.46
Vacation Pay Expense	432.00	144.69	0.00
Total Payroll Expenses	<u>339,890.83</u>	<u>118,740.08</u>	<u>111,717.80</u>
Site Maintenance and Repair			
Building Repair	2,000.00	0.00	2,304.87
Ground Water	8,800.00	0.00	0.00
Leachate	6,000.00	0.00	0.00
Bin Rental	2,400.00	525.00	2,400.00
Recycling Expenses	9,019.91	1,647.58	4,901.20
Roads	3,200.00	109.00	0.00
Surface Water	250.00	0.00	0.00
Site Clean up	2,050.00	0.00	0.00
New Signs at the Landfill Entrance	300.00	170.00	368.00
Total Site Maintenance and Repair	<u>34,019.91</u>	<u>2,451.58</u>	<u>9,974.07</u>

	Budget 2010	30-Apr-10	30-Apr-09
Other Expenses			
Amortization/Depreciation	139,478.30	46,769.45	50,087.54
Bank & Collection Charges	0.00	(16.97)	6.57
Interest Expense	13,933.87	0.00	0.15
Uncollectible Accounts	100.00	428.21	0.00
Waste Hauling Study	0.00	16,243.88	0.00
Composters Cost of Goods Sold	0.00	0.00	0.00
Promotion	0.00	0.00	1,739.95
Safety Awards	200.00	0.00	425.00
Soil Testing (Hydrocarbons)	0.00	363.25	0.00
Total Other Expenses	153,712.17	63,787.82	52,259.21
TOTAL EXPENSE	708,051.82	237,662.88	257,931.00
NET INCOME	144,684.86	(30,389.43)	(41,812.65)
Capital Expenditures			
Reclaim Monitoring Wells	0.00	0.00	0.00
New Demo/Const Cell	0.00	0.00	0.00
Final Drive - Track Loader	0.00	0.00	0.00
Left Front Housing - Backhoe	0.00	0.00	0.00
Load Cell for Scale	0.00	0.00	0.00
New Back Tire - Backhoe	0.00	0.00	0.00
Deck by Office	0.00	0.00	0.00
Shop Insulation/Doors	0.00	0.00	0.00
Replace Track Links on Loader	0.00	0.00	0.00
816-F2 Compactor (over 10 years)	33,907.53	0.00	0.00
Master Plan Review (due in 2010)	3,000.00	0.00	0.00
Future Excavation of Cell 5 (over 10 yrs)	24,409.00	0.00	0.00
Landfill Audit (Due in 2010)	3,250.00	0.00	0.00
Building Reserve	8,648.33	0.00	0.00
Equipment Reserve	14,010.00	0.00	0.00
Electric Perimeter Fence	5,000.00	0.00	0.00
Freon Removal Equipment	300.00	0.00	0.00
Metal Recycling (over 2 years)	3,560.00	0.00	0.00
Cover on Cell 4	48,600.00	0.00	0.00
Muffler for Track Loader	0.00	1,950.51	0.00
Repair Radiator on Track Loader	0.00	3,926.43	
Total Capital Expenditures	144,684.86	5,876.94	0.00
Net Income - Capital Expenditures	0.00	(36,266.37)	(41,812.65)

MACKENZIE REGIONAL WASTE MANAGEMENT COMMISSION
REQUEST FOR DECISION

Issue:
Minutes of April 10, 2010

Recommendation:
Adoption of the minutes.

Comments:

Date: June 4, 2010

Submitted By: Pat Sliworsky, Manager

Reviewed By: Kathy Bancarz, Administrative/Financial Assistant



Mackenzie Regional Waste Management Commission

**Regular Meeting
Mirage, Meeting Room
10:00 a.m.
April 10, 2010**

MINUTES

In Attendance	Jerry Chomiak Kelly Drover Rose Cretney Peter Braun	Vice Chair, Town of High Level Town of Rainbow Lake Town of Rainbow Lake Mackenzie County
Staff:	Pat Sliworsky Kathy Bancarz	Manager Administrative/Financial Assistant
Regrets:	Stuart Watson Barry Gladders	Chair, Mackenzie County Town of High Level

1. CALL TO ORDER

Vice Chairman Jerry Chomiak called the meeting to order at 10:26 a.m.

2. ADDITIONS TO OR DELETIONS FROM THE AGENDA

4.2 William Pashko with Haul-All

3. ADOPTION OF AGENDA

Resolution #18-10

Moved by Kelly Drover

THAT the agenda for the April 10, 2010 regular meeting be adopted as amended.

CARRIED

4. DELEGATIONS

**4.1 Richard Donaldson,
Auditor**

Richard Donaldson presented his audit findings to the Board.

Resolution #19-10

Moved by Peter Braun

THAT the Board accept the Audit Findings Report as presented.

CARRIED

4.2 Haul-All

William Pashko made a presentation to the Board regarding the benefits of using the Transtor system at the transfer stations.

Resolution #20-10

Moved by Rose Cretney

THAT the presentation be accepted for information.

CARRIED

5. IN-CAMERA ITEMS

5.1 Audit Report

An in-camera session was not required.

6. REPORTS

**6.1 Manager's Report for
December 2009,
January & February
2010**

Manager Pat Sliworsky presented his report and updated the Board on the current happenings.

Resolution #21-10

Moved by Kelly Drover

THAT the Manager's Report be accepted for information.

CARRIED

**6.2 Financial Reports for
December 31, 2009 and
February 28, 2010**

Resolution #22-10

Moved by Kelly Drover

THAT the Board instruct Administration to allocate \$85,000.00 to the reserve account for the 2009 fiscal year, for the budgeted capital expenditures.

CARRIED

Resolution #23-10

Moved by Rose Cretney

THAT the Financial Report be accepted for information.

CARRIED

7. ADOPTION OF MINUTES

**7.1 Minutes of January 9
and January 19, 2010**

Resolution #24-10

Moved by Peter Braun

THAT the minutes of the January 9, 2010 Mackenzie Regional Waste Management Commission Regular Meeting and the January 19, 2010 Special Meeting be adopted as presented.

CARRIED

8. BUSINESS ARISING FROM THE MINUTES

8.1 Waste Study / Stantec

Stuart McCormick with Stantec was present, via the telephone, to present their findings on the waste study they conducted.

Resolution #25-10

Moved by Peter Braun

THAT the Board table the waste study to the next meeting for further discussion.

CARRIED

9. NEW BUSINESS

9.1 Write Offs

Resolution #26-10

Moved by Peter Braun

THAT the Commission write-off the balance owing on Emroc Drywall's account, for the amount of \$9.38.

CARRIED

9.2 Levy Discussion

Resolution #27-10

Moved by Kelly Drover

THAT the Board table the levy discussion to the next meeting.

CARRIED

10. CORRESPONDENCE

10.1 Alberta Health and Safety Association

Resolution #28-10

Moved by Rose Cretney

THAT the Board offer congratulations and accept the letter for information.

CARRIED

10.2 DBS Environmental

Resolution #29-10

Moved by Kelly Drover

THAT the Board instruct Administration to draft a letter to the local MLA to voice the Commission's dissatisfaction of the changes to the paint program, and to draft a letter to send to all the Municipalities asking them for their support by also sending letters to the MLA.

CARRIED

10.3 GreenFill Proposal

The Board discussed some concerns regarding accepting the proposal without some additional information.

Resolution #30-10

Moved by Kelly Drover

THAT the Board accept the proposal for information and instruct Administration to investigate and bring back recommendations on ways that the Commission can protect itself.

CARRIED

11. NOTICE OF MOTION

There were none.

12. NEXT MEETING DATE

Resolution #31-10

Moved by Rose Cretney

THAT the next Regular Meeting be held on June 5, 2010.

CARRIED

13. ADJOURNMENT

Resolution #32-10

Moved by Peter Braun

THAT the meeting be adjourned at 11:51 a.m.

CARRIED

Vice Chairman

Manager

**MACKENZIE REGIONAL WASTE MANAGEMENT COMMISSION
REQUEST FOR DECISION**

Item # _____

Issue:
Changes to the Budget Development and Approval Policy 13-05

Recommendation:
THAT the Commission accept the change to the Budget Development and Approval Policy as recommended by the Manager.

Manager Comments:
Recommend to change the date on the line below from “September 30” to “October 31”.
By September 30 of each year the member municipalities will be advised of any rate increases.

Date: June 4, 2010

Submitted By: Pat Sliworsky, Manager

Reviewed By:

MACKENZIE REGIONAL WASTE MANAGEMENT COMMISSION POLICY

	Policy No.: 13-05
Facility: Mackenzie Regional Landfill	Effective Date: October 22, 2005
Policy Title: Budget Development and Approval	Page 1 of 2

PURPOSE:

To ensure the responsible fiscal management of assets, liabilities and current operational costs to maintain responsible financial control and to provide for equitable sharing of costs for waste management disposal services among all member municipalities, while minimizing risk to each individual member.

POLICY:

Before the end of each and every calendar year, the Commission Board will set a budget for the next fiscal year, such budget to include all sources of anticipated revenue and expenditures for the management, operation and maintenance of the waste disposal facilities. The annual budget shall be based on the principles of full cost recovery.

RESPONSIBILITIES:

The Commission has the power to construct, maintain and control the management of the Regional Waste Disposal Facilities and is authorized to receive and disburse funds for the purposes of said undertaking.

By September 30 of each year the member municipalities will be advised of any rate increases. Contractors and customers will be given 60 days prior notice of any rate changes, subject to any unforeseeable circumstances. Amended January 21, 2006 Res. #16-06

At least Thirty (30) days prior to the beginning of each fiscal year of the Commission, during the term thereof and based on the principles of full cost recovery, the Manager shall prepare and submit to the Board, in writing, a recommended budget for operation and management of the facilities for the next year setting forth the Manager's best estimate of all expenses and anticipated revenues for the operation and maintenance of the Facilities, including, but not limited to:

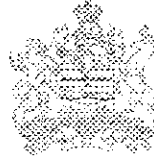
- Operation and supervision of the disposal facilities
- Maintenance and repairs
- Insurance premiums
- Leases and operating permits
- Disposal rates
- Administration costs
- Environmental monitoring
- Consulting fees
- Interest and other revenues
- Audits

MACKENZIE REGIONAL WASTE MANAGEMENT COMMISSION POLICY

	Policy No.: 13-05
Facility: Mackenzie Regional Landfill	Effective Date: October 22, 2005
Policy Title: Budget Development and Approval	Page 2 of 2

The Board shall amend Fee Schedule "A" of Bylaw 02-04 for each calendar year as required, to be charged to each of the member Municipalities and other users.

	DATE	RESOLUTION
Approved	October 22, 2005	67-05
Amended	January 21, 2006	16-06
Amended		



Legislature Office
402 Legislature Building
10800 - 97 Avenue
Edmonton, Alberta T5K 2B6
Phone (780) 415 - 9406
Fax (780) 415 - 9566
www.solgen.gov.ab.ca

LEGISLATIVE ASSEMBLY
ALBERTA

Constituency Office
9907 101 Avenue
P.O. Box 6299
Peace River, Alberta T8S 1S2
Phone (780) 624 - 5400
Fax (780) 624 - 5464
peace.river@assembly.ab.ca

Hon. Frank Oberle
MLA, Peace River Constituency
Solicitor General &
Minister of Public Security

May 21, 2010

Mr. Stuart Watson
Chairman
Mackenzie Regional Waste Management Commission
Box 235
High Level, Alberta
T0H 1Z0

Dear Mr. Watson:

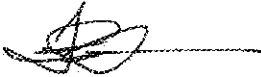
Thank you for your letter dated April 13, 2010, regarding the Alberta Recycling Management Authority I have consulted with my colleague Mr. Cal Dallas, Parliamentary Assistant to the Minister of Environment, who is leading Alberta's waste management strategies. I am pleased to provide you with the following information.

In response to current financial challenges, Alberta Recycling, the Delegated Administrative Organization responsible for managing the paint recycling program, has taken a number of cash management measures. As a result of reduced paint sales and continued high volumes of waste paint returned for recycling, a 15 per cent reduction in funding paid to paint processors for the collection and recycling of paint was instituted. I assure you that the paint recycling program is financially viable and once paint sales rebound it will be sustainable at the current environmental fees. Since approximately 90 per cent of the program's expenditures are for collection and processing, this temporary program change was unavoidable.

Over the last month, Alberta Recycling has held several meetings with municipalities and processors. Alberta Recycling wants to reduce or negate the need for the additional charge from processors to municipalities by finding ways to reduce costs and increase efficiencies. There are opportunities for processors and municipalities to cooperate to reduce costs and reduce or avoid extra charges.

Alberta Recycling is a not-for-profit organization that operates at arm's length from government, is managed by a multi-stakeholder Board of Directors and is accountable to the Minister of the Environment. I encourage you to contact Mr. Brad Schultz, Director of Recycling Programs, Alberta Recycling, at 780-442-3215. If you would like to speak with an Alberta Environment representative, please contact Ms. Brenna McLennan, Waste Reduction Specialist, at 780-644-2310 (dial 310-0000 to be connected toll-free).

Sincerely,

A handwritten signature in black ink, appearing to be 'F. Oberle', written over a horizontal line.

Frank Oberle
MLA, Peace River Constituency
Solicitor General & Minister of Public Security

c.c. Hon. Rob Renner, Minister of Environment
Cal Dallas, Parliamentary Assistant, Environment
Brenna McLennan, Environment



9716 - 97 STREET
High Level AB T0H 1Z0

Phone: 780.926.3398
Fax: 780.926.2191
F026@fountaintire.com
886734516RT0001

Work Order

Order Number: 026SW000002898
Service Contact: GEORGE BRAUN

Date: 26/05/2010
Doc. Number: 026W000000393
PO:

Bill To Customer: 026C0000893

Ship to Customer: 026C0000893

Year: NA Unit:

Make: MISCELLANEOUS

Model: OTHER MISC.

MACKENZIE REGIONAL WASTE M/
BOX 235
HIGH LEVEL AB T0H 1Z0
780.926.2958

MACKENZIE REGIONAL WASTE M/
BOX 235
HIGH LEVEL AB T0H 1Z0
780.926.2958

Design:

Color:

Engine

License: NA,

Vin:

Mileage: 0

Hours: 0

Item Number	Item Description	Position	Qty	Unit Price	Total
Commercial					
TSC031	18.5-24 FOAM FILL		2.00	\$2,398.00	\$4,796.00
TSC031	12-185 FOAM FILL		2.00	\$846.00	\$1,692.00

I hereby authorize the repairs and materials on the above estimate.
I hereby authorize your employee to operate my vehicle for the purpose of testing or inspection.

Service Comments

Parts:	\$0.00
Services:	\$6,488.00
Sub Total:	\$6,488.00
GST:	\$324.40
Total:	\$6,812.40

Customer Signature

Fountain Tire is committed to protect your personal information
Please refer to our privacy act at www.fountaintire.com

This is not an Invoice. Please do not pay from this document.

Page 1 of 1