

MACKENZIE REGIONAL WASTE MANAGEMENT COMMISSION

AGENDA

MARCH 12, 2011

Page

1. **CALL TO ORDER**
 2. **ADDITIONS TO OR DELETIONS FROM THE AGENDA**
 3. **ADOPTION OF AGENDA**
 4. **DELEGATIONS**
 - 4.1 Richard Donaldson, Auditor
Draft 2010 Financial Statements
 5. **IN-CAMERA ITEMS**
 - 5.1 Audit Report
 6. **REPORTS**
 - 6.1 Manager's Report
 - 6.2 Financial Report
 - 6.3 General Landfill Reserve
- 3-21
- 22-34
- 35

Page	7.	ADOPTION OF MINUTES
36-40	7.1	Minutes of November 20, 2010
	8.	BUSINESS ARISING FROM THE MINUTES
	8.1	Comparison of Waste Commissions
	8.2	Researching Capital Costs of Constructing a New Landfill
	9.	NEW BUSINESS
41-42	9.1	Write-offs
43-44	9.2	Call-out Directive
	10.	CORRESPONDENCE
45	10.1	Alberta Health & Safety Association
46-49	10.2	Letter From AENV Re: Site Inspection
	11.	NOTICE OF MOTION
	12.	NEXT MEETING
	12.1	April 9, 2011
	13.	ADJOURNMENT

MACKENZIE REGIONAL WASTE MANAGEMENT COMMISSION
REQUEST FOR DECISION

Issue:

Monthly Operating Reports for November and December 2010, January and February 2011.

Recommendation:

Reviewed by Manager and accept for information.

Comments:

Date: March 12, 2011

Submitted By: Pat Sliworsky, Manager

Reviewed By:

***Mackenzie Regional Waste Management Commission
Class IIB Landfill***

Monthly Operations Report and Summary

Month of November 2010

Reporting To:

Alberta Environmental and Protection

Attention: Mr. George Neurohr

10320 - 99th Street
Grande Prairie, Alberta
T8V 6J4

Phone: 780-538-5351

Mackenzie Regional Waste Management Commission
Monthly Operations Summary
Month of November 2010

1: Supervision and Operating Personnel

<u>Manager</u>	<u>Pat Sliworsky</u>	<u>MRWMC</u>
<u>Landfill Operator</u>	<u>Neville Pomeroy</u>	<u>MRWMC</u>
<u>Equipment Operator</u>	<u>Nels Lizotte</u>	<u>MRWMC</u>
<u>Administrative/Financial Assistant</u>	<u>Kathy Bancarz</u>	<u>MRWMC</u>

2: Load Inspections Inspections are conducted on a random basis throughout the month

3: Daily Activities Please find attached the Summary of Daily Activities and Information
Daily journal filed at the landfill office;
Scale cleaning
Sorting and hauling recycled metals and white goods

4: Operational Problems
Ravens
Customers placing waste at incorrect locations
Customers not covering & securing loads

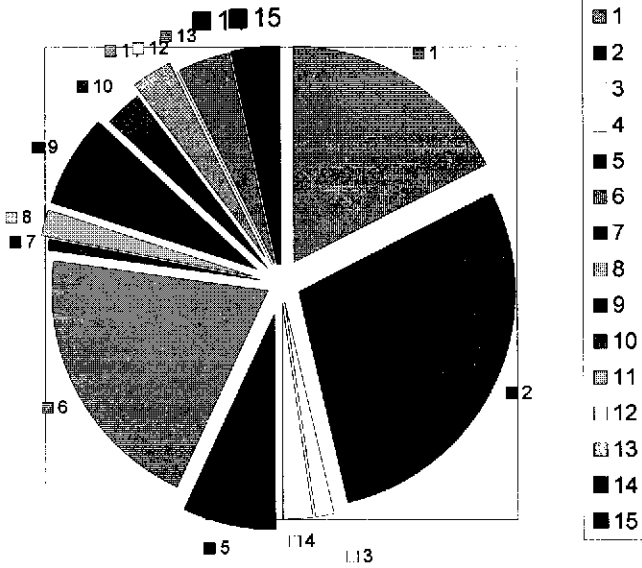
5: Public Complaints

6: Special Activities Litter fences are moved to appropriate locations
White goods are being stored for future recycling off site
Metal is being stored for future recycling off site

Mackenzie Regional Waste Management Commission
Monthly Reporting Summary
Month November 2010

Monitoring Parameters	Frequency	Method	Sampling Location	Reporting Method	Attachment of Action
Weight & type of waste received	Daily, per load	Landfill Weigh Scale	Landfill Entrance	Scale Record per load	Attached Waste Received Report
Weight & type of waste removed	Daily, per load	Landfill Weigh Scale	Landfill Entrance	Scale Record per load	Attachment #2 Load Summary
Hazardous waste detection	Daily, per load	Observation and load inspection	Landfill & Entrance and disposal storage sites	Operating Record	None observed this reporting
Location of waste deposited	Daily	Per survey record	Active portion of cell	Operating Record	Cell 3B
Cover Thickness	Daily	Observation	Active portion of cell	Operating Record	None, using dirt as daily cover
Working Face Width	Daily	Observation	Active portion of cell	Operating Record	75ft working face, monitored
Leachate level monitoring	Per operation plan	Measurement	Leachate storage pond or cell	Operating Record	Annual reporting
Leachate analysis	Per operation plan	Grab Sample	Leachate storage pond or cell	Operating Record	none
Volume of leachate removed	As removed	Measurement	Leachate storage pond or cell	Operating Record	none
Surface Monitoring	Surface water monitoring plan	Observation	Active portion of cell	Operating Record	Daily
Intermidiate cover	When cover applied	Observation	Completion of cell	Operating Record	none
Final cover	Cell Closure	Survey cores and test pits	Completion of cell	Survey Record	none
Groundwater monitoring	Per GWP as amended	Measurement and grab sample	Groundwater monitoring wells	Operating Record	Annual reporting

Waste Received
November 2010

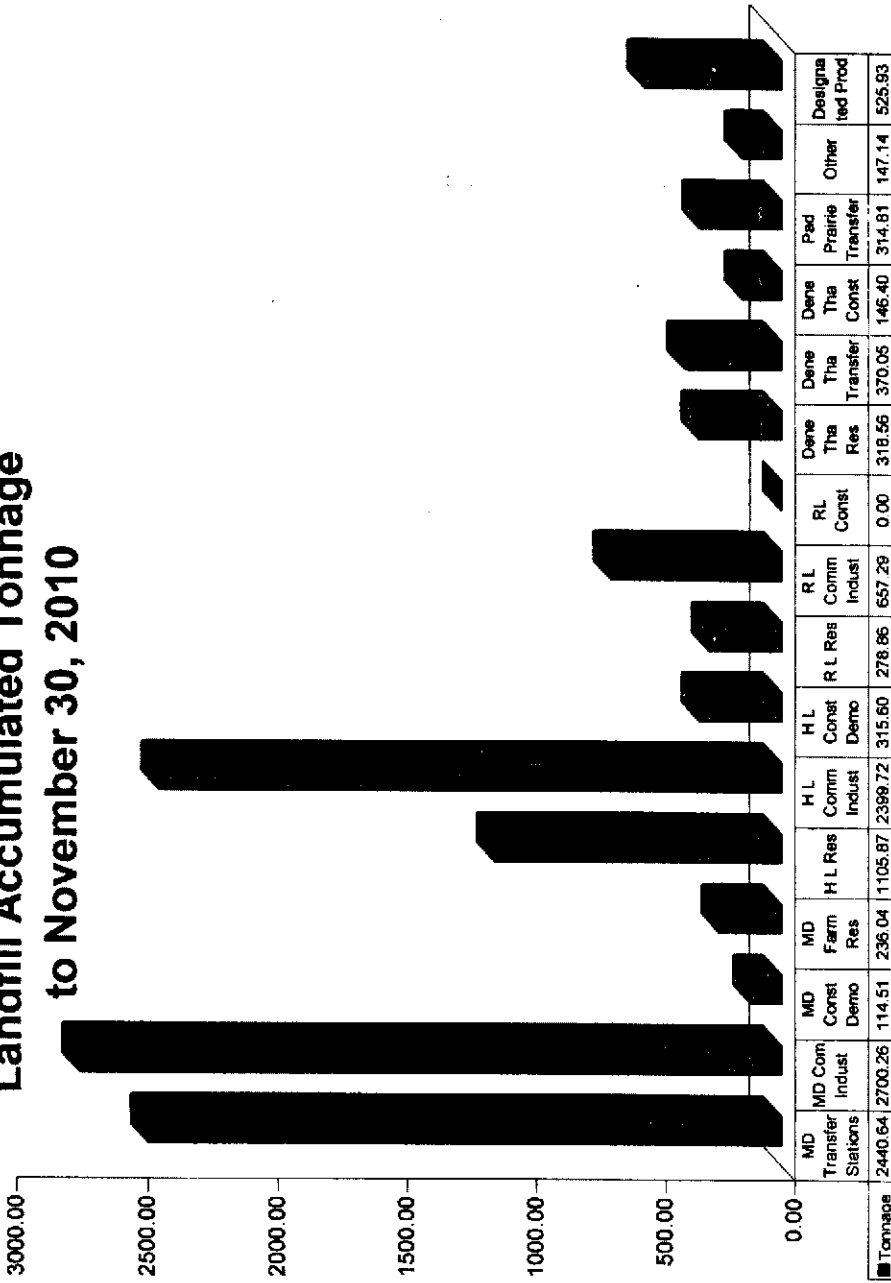


Waste Volume Legend	Metric Tonne	% of Total	Legend
MD #23 Transfer Stations	171.00	18%	1
MD #23 Commercial - Industrial	280.37	29%	2
MD #23 Construction - Demolition	12.31	1%	3
MD #23 Farm Residential	20.54	2%	4
H L Residential	68.39	7%	5
H L Commercial-Industrial	195.43	20%	6
H L Construction-Demolition	8.03	1%	7
R L Residential	20.90	2%	8
R L Commercial-Industrial	65.96	7%	9
Dene Tha Residential	28.72	3%	10
Dene Tha Transfer	29.50	3%	11
Dene Tha Const./Demo.	0.00	0%	12
Paddle Transfer	36.18	4%	13
Non-Members	11.16	1%	14
Products to Designated Areas	21.67	2%	15
Total	970.15	100%	

Items not included in chart

Soil with Hydrocarbons	23.59
DIRT	0.00

Landfill Accumulated Tonnage to November 30, 2010



Source of Waste

Mackenzie Regional Waste Management Commission Summary of Waste Received in 2010- Sorted by Area - per Metric Tonne

Mackenzie County	January	February	March	April	May	June	July	August	September	October	November	December	Total
Transfer Stations	151.87	112.65	173.39	229.35	286.83	277.12	247.77	260.06	278.74	239.86	171.00	239.86	2440.64
Commercial - Industrial	194.78	242.70	250.92	217.10	228.54	278.17	249.96	233.59	257.28	266.83	280.37	266.83	2700.26
Construction - Demolition	0.00	2.90	10.03	0.00	1.21	4.74	39.93	32.77	0.52	10.10	12.31	10.10	114.51
Farm Residential	5.98	3.84	3.93	44.99	22.05	22.32	35.24	8.00	24.94	44.21	20.54	20.54	236.04
Total Mackenzie County	352.63	362.09	438.27	491.44	550.63	582.35	572.93	534.42	561.48	561.00	484.22	0.00	5,491.45
Town of High Level													
Residential	57.37	52.97	67.76	101.93	171.91	134.73	118.90	121.24	116.92	83.75	66.39	83.75	1105.87
Commercial - Industrial	180.12	192.67	241.23	221.01	198.08	244.12	246.59	211.20	212.85	256.41	185.43	256.41	2399.72
Construction - Demolition	6.36	2.08	16.67	23.77	8.58	10.13	152.72	31.92	22.75	32.59	8.03	32.59	315.60
Total High Level	243.85	247.72	325.66	346.71	378.58	388.98	618.21	384.36	352.52	382.75	271.85	0.00	3,821.19
Town of Rainbow Lake													
Residential	18.28	16.78	21.97	19.65	25.39	37.31	24.50	27.70	36.58	27.78	20.90	27.78	278.86
Commercial - Industrial	48.59	48.14	72.27	42.98	40.33	80.50	73.32	75.99	71.36	58.24	65.96	58.24	667.29
Construction - Demolition	0.00	0.00	0.00	0.00	0.00	0.00	0.00	0.00	0.00	0.00	0.00	0.00	0.00
Total Rainbow Lake	66.87	64.92	94.24	62.63	65.72	117.81	97.82	103.29	107.97	86.03	86.86	0.00	936.15
Dene The First Nations													
Residential	14.18	13.73	22.74	26.01	24.15	30.06	51.30	41.64	30.14	35.89	28.72	35.89	318.96
Transfer Station	25.01	29.12	30.28	35.84	45.80	43.55	34.34	31.40	30.73	34.48	28.50	34.48	370.05
Construction - Demolition	0.97	1.84	0.00	0.00	0.53	2.60	0.00	140.46	0.00	0.00	0.00	0.00	146.40
Total Dene Tna	40.16	44.69	53.02	61.85	70.48	76.21	85.64	213.50	60.87	70.37	57.22	0.00	635.01
Paddle Prairie Metis Settlement													
Transfer Station	20.97	23.32	20.64	27.22	27.81	27.79	35.93	29.00	31.23	34.72	36.18	34.72	314.81
Total Paddle Prairie	20.97	23.32	20.64	27.22	27.81	27.79	35.93	29.00	31.23	34.72	36.18	0.00	314.81
Others													
Non-members	3.90	8.45	17.27	0.00	9.92	67.14	17.91	5.01	2.90	3.48	11.16	3.48	147.74
Total Others	3.90	8.45	17.27	0.00	9.92	67.14	17.91	5.01	2.90	3.48	11.16	3.48	147.74
Total Waste Deposited in Pit	728.38	763.18	949.11	989.85	1,103.14	1,240.28	1,328.44	1,249.58	1,116.96	1,138.36	948.49	0.00	11,546.76
Products to Designated Area													
E-waste, electronics	0.14	3.04	0.07	3.34	2.20	0.63	1.09	2.48	1.04	1.14	3.70	1.14	18.87
Liquid Sump	0.00	0.58	34.67	1.23	7.57	0.00	14.57	0.82	9.16	2.89	10.76	2.89	82.05
Wooden Burnable	0.65	0.87	1.18	8.24	7.38	11.62	7.25	3.21	24.96	11.90	3.21	24.96	80.47
Pesticide Containers	0.00	0.00	0.00	0.00	0.00	0.07	0.01	0.00	0.03	0.00	0.00	0.00	0.11
Batteries	0.15	2.99	0.43	0.00	0.82	0.49	0.53	2.73	0.65	0.33	0.01	0.65	9.13
Tires	2.07	0.32	1.38	2.88	1.55	3.25	0.90	0.58	1.69	3.59	0.68	3.59	18.90
White Goods/Assorted metals	3.26	2.27	3.78	8.14	9.09	5.61	2.14	2.42	3.31	6.28	3.31	6.28	48.60
HH Waste & Paint	0.03	0.22	0.31	0.00	0.21	0.02	0.02	0.16	0.06	0.13	0.00	0.13	1.37
Compost	0.00	0.00	13.17	0.74	10.56	13.90	8.16	4.97	2.72	8.52	0.00	8.52	62.74
Oil Filler/Oil Containers	0.00	0.00	0.01	0.32	0.83	0.40	0.00	0.08	0.04	0.00	0.00	0.00	1.68
Asbestos	0.00	0.00	0.00	0.00	0.00	77.30	27.41	28.02	46.78	21.03	0.00	21.03	200.52
Animals-haulers responsible for	0.06	0.06	0.04	0.01	0.06	0.03	0.01	0.00	0.00	0.10	0.00	0.10	0.49
Total to Designated Areas	6.36	10.37	56.04	24.91	40.27	113.32	62.30	46.47	80.62	55.71	21.57	0.00	625.83
Products Diverted for Recycle													
2010 Monthly Total by Weight	734.73	763.66	1,004.16	1,014.76	1,143.41	1,363.60	1,390.74	1,295.06	1,207.48	1,194.06	970.15	0.00	12,071.68
2009 Monthly Total by Weight	893.65	815.94	943.06	974.85	1,531.73	1,296.24	1,274.90	1,143.22	1,288.22	1,228.99	892.40	768.45	13,081.64
2008 Monthly Total by Weight	877.33	982.24	1,077.40	1,049.53	1,802.21	1,427.88	1,311.93	1,522.26	1,322.21	2,356.70	1,174.06	895.78	15,739.54
Soil with Hydrocarbons	28.88	23.98	37.86	100.71	36.17	64.86	6296.99	4688.90	2815.74	47.54	23.59	0.00	12,966.80
DIRT	0	0	0	6.03	32.72	18.82	13.04	1.85	25.26	103.76	0	0	200.16

***Mackenzie Regional Waste Management Commission
Class IIB Landfill***

Monthly Operations Report and Summary

Month of December 2010

Reporting To:

Alberta Environmental and Protection

Attention: Mr. George Neurohr

10320 - 99th Street
Grande Prairie, Alberta
T8V 6J4

Phone: 780-538-5351

Mackenzie Regional Waste Management Commission
Monthly Operations Summary
Month of December 2010

1: Supervision and Operating Personnel

<u>Manager</u>	<u>Pat Sliworsky</u>	<u>MRWMC</u>
<u>Landfill Operator</u>	<u>Neville Pomeroy</u>	<u>MRWMC</u>
<u>Equipment Operator</u>	<u>Nels Lizotte</u>	<u>MRWMC</u>
<u>Administrative/Financial Assistant</u>	<u>Kathy Bancarz</u>	<u>MRWMC</u>

2: Load Inspections Inspections are conducted on a random basis throughout the month

3: Daily Activities Please find attached the Summary of Daily Activities and Information
Daily journal filed at the landfill office;
Scale cleaning
Sorting and hauling recycled metals and white goods

4: Operational Problems

Ravens
Customers placing waste at incorrect locations
Customers not covering & securing loads

5: Public Complaints

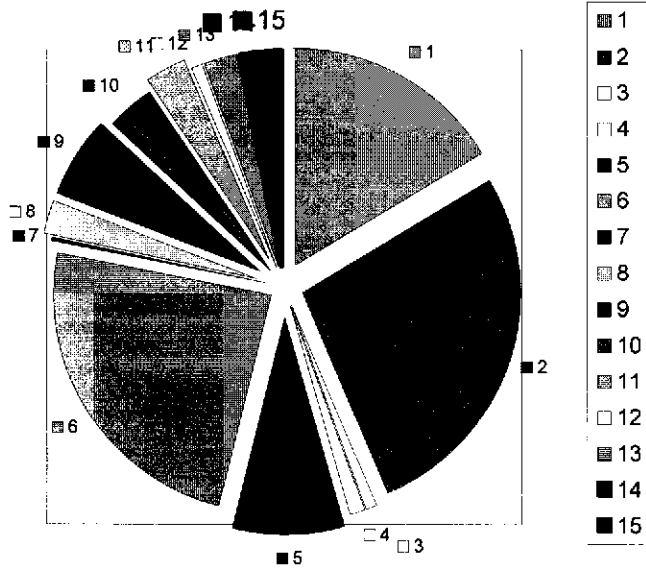
6: Special Activities Litter fences are moved to appropriate locations
White goods are being stored for future recycling off site
Metal is being stored for future recycling off site

Mackenzie Regional Waste Management Commission
Montly Reporting Summary
Month December 2010

Monitoring Parameters	Frequency	Method	Sampling Location	Reporting Method	Attachment of Action
Weight & type of waste received	Daily, per load	Landfill Weigh Scale	Landfill Entrance	Scale Record per load	Attached Waste Received Report
Weight & type of waste removed	Daily, per load	Landfill Weigh Scale	Landfill Entrance	Scale Record per load	Attachment #2 Load Summary
Hazardous waste detection	Daily, per load	Observation and load inspection	Landfill & Entrance and disposal storage sites	Operating Record	None observed this reporting
Location of waste deposited	Daily	Per survey record	Active portion of cell	Operating Record	Cell 3B
Cover Thickness	Daily	Observation	Active portion of cell	Operating Record	None, using dirt as daily cover
Working Face Width	Daily	Observation	Active portion of cell	Operating Record	75ft working face, monitored
Leachate level monitoring	Per operation plan	Measurement	Leachate storage pond or cell	Operating Record	Annual reporting
Leachate analysis	Per operation plan	Grab Sample	Leachate storage pond or cell	Operating Record	none
Volume of leachate removed	As removed	Measurement	Leachate storage pond or cell	Operating Record	none
Surface Monitoring	Surface water monitoring plan	Observation	Active portion of cell	Operating Record	Daily
Intermediate cover	When cover applied	Observation	Completion of cell	Operating Record	none
Final cover	Cell Closure	Survey cores and test pits	Completion of cell	Survey Record	none
Groundwater monitoring	Per GWP as amended	Measurement and grab sample	Groundwater monitoring wells	Operating Record	Annual reporting

Mackenzie Regional Landfill

**Waste Received
December 2010**

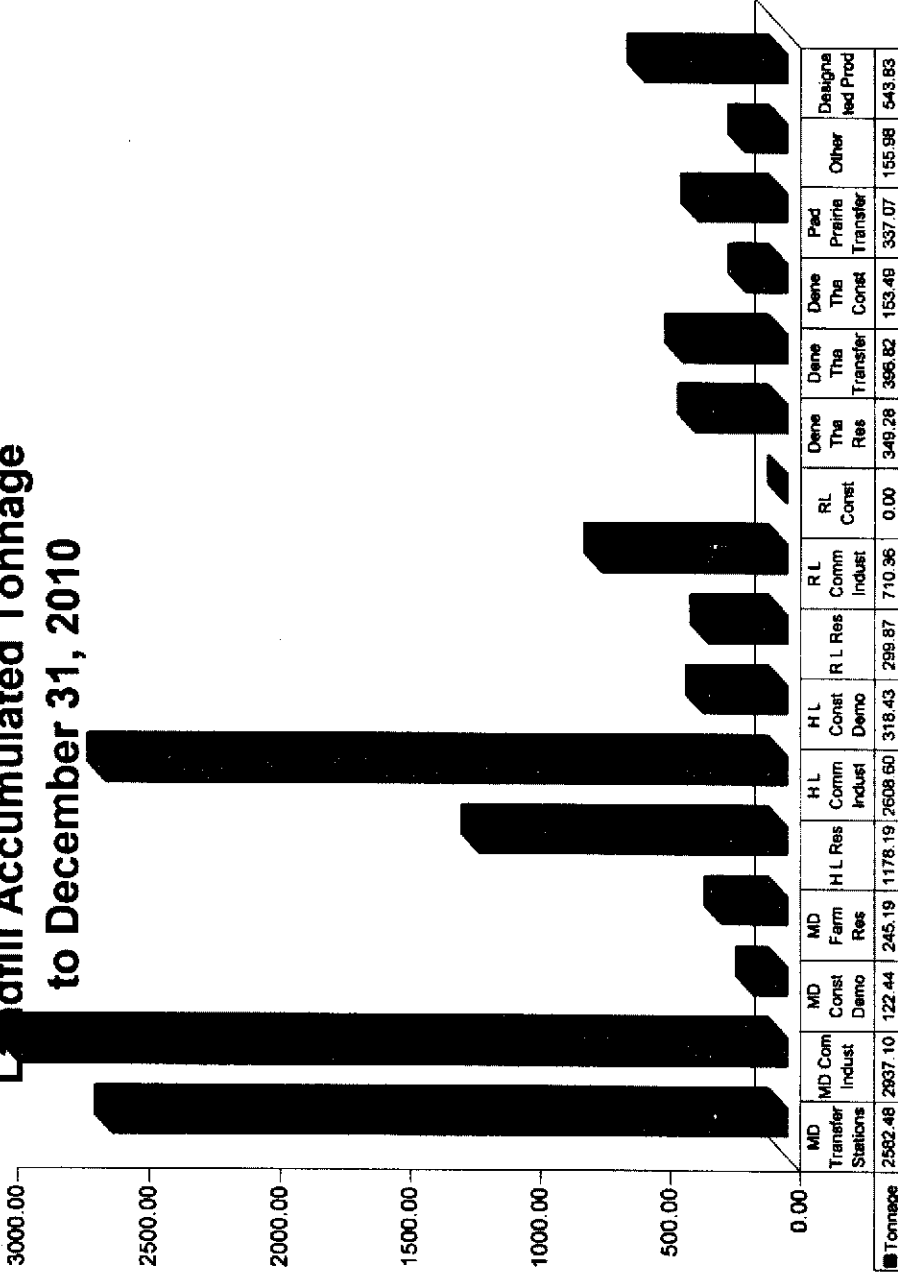


Waste Volume Legend	Metric Tonne	% of Total	Legend
MD #23 Transfer Stations	141.85	16%	1
MD #23 Commercial - Industrial	236.84	27%	2
MD #23 Construction - Demolition	7.93	1%	3
MD #23 Farm Residential	9.16	1%	4
H L Residential	72.32	8%	5
H L Commercial-Industrial	208.88	24%	6
H L Construction-Demolition	2.83	0%	7
R L Residential	21.01	2%	8
R L Commercial-Industrial	53.07	6%	9
Dene Tha Residential	30.72	4%	10
Dene Tha Transfer	26.77	3%	11
Dene Tha Const./Demo.	7.09	1%	12
Paddle Transfer	22.26	3%	13
Non-Members	8.84	1%	14
Products to Designated Areas	17.90	2%	15
Total	867.46	100%	

Items not included in chart

Soil with Hydrocarbons	36.47
DIRT	0.00

Landfill Accumulated Tonnage to December 31, 2010



Metric
Tonnes

Source of Waste

Mackenzie Regional Waste Management Commission Summary of Waste Received in 2010- Sorted by Area - per Metric Tonne

	January	February	March	April	May	June	July	August	September	October	November	December	Total
Mackenzie County	151.87	112.65	173.39	229.35	298.83	277.12	247.77	260.06	278.74	239.86	171.00	141.85	2582.48
Transfer Stations													
Commercial - Industrial	194.78	242.70	260.92	217.10	228.54	278.17	249.99	233.59	257.28	266.83	260.37	236.84	2937.10
Construction - Demolition	0.00	2.90	10.03	0.00	1.21	4.74	39.93	32.77	0.52	10.10	12.31	7.93	122.44
Farm Residential	5.98	3.84	3.93	44.99	22.05	22.32	35.24	8.00	24.94	44.21	20.54	9.16	245.19
Total Mackenzie County	352.63	382.09	438.27	491.44	550.63	582.35	572.93	534.42	561.48	561.00	484.22	386.77	5,887.22
Town of High Level													
Residential	57.37	52.97	67.76	101.93	171.91	134.73	118.90	121.24	116.92	83.75	88.39	72.32	1178.19
Commercial - Industrial	180.12	192.67	241.23	221.01	198.09	244.12	246.59	211.20	212.85	256.41	195.43	208.88	2608.60
Construction - Demolition	6.36	2.08	16.67	23.77	8.58	10.13	152.72	31.92	23.75	32.59	8.03	8.03	318.43
Total High Level	243.85	247.72	325.66	346.71	378.58	388.98	518.21	364.36	352.92	382.75	271.85	284.03	4,106.22
Town of Rainbow Lake													
Residential	18.28	18.78	19.65	19.65	25.39	37.31	24.50	27.70	36.59	27.78	20.90	21.01	299.87
Commercial - Industrial	48.59	48.14	72.27	42.98	40.33	60.50	73.32	75.59	71.38	58.24	65.96	53.07	710.36
Construction - Demolition	0.00	0.00	0.00	0.00	0.00	0.00	0.00	0.00	0.00	0.00	0.00	0.00	0.00
Total Rainbow Lake	66.87	66.92	94.24	62.63	65.72	97.81	97.82	103.29	107.97	86.03	86.86	74.08	1,010.23
Dene Tha First Nations													
Residential	14.18	13.73	22.74	26.01	24.15	30.06	51.30	41.64	30.14	35.89	28.72	30.72	349.28
Transfer Station	25.01	26.12	30.28	35.84	45.80	43.55	34.34	31.40	30.73	34.48	29.50	26.77	398.82
Construction - Demolition	0.97	1.84	0.00	0.00	0.53	2.60	0.00	140.46	0.00	0.00	0.00	7.09	153.49
Total Dene Tha	40.16	44.69	53.02	61.86	70.48	76.21	86.64	213.50	60.87	70.37	58.22	64.58	898.59
Paddle Prairie Metis Settlement													
Transfer Station	20.97	23.32	20.64	27.22	27.81	27.79	35.93	28.00	31.23	34.72	36.18	22.28	337.07
Total Paddle Prairie	20.97	23.32	20.64	27.22	27.81	27.79	35.93	28.00	31.23	34.72	36.18	22.28	337.07
Others													
Non-members	3.90	8.45	17.27	0.00	9.92	67.14	17.91	5.01	2.90	3.48	11.16	8.84	155.98
Total Others	3.90	8.45	17.27	0.00	9.92	67.14	17.91	5.01	2.90	3.48	11.16	8.84	155.98
Total Waste Deposited in Pit	728.38	763.18	949.11	989.65	1,103.14	1,240.28	1,328.44	1,249.58	1,116.96	1,138.36	948.46	849.56	12,395.31
Products to Designated Area													
E-waste, electronics	0.14	3.04	0.07	3.34	2.20	0.63	1.08	2.48	1.04	1.14	3.70	0.11	18.98
Liquid Sump	0.00	0.58	34.87	1.23	7.57	0.00	14.57	0.82	9.16	2.69	10.76	7.36	89.41
Wooden Burnable	0.65	0.87	1.18	8.24	7.38	11.82	7.25	3.21	24.96	11.90	3.21	4.38	84.85
Pesticide Containers	0.00	0.00	0.00	0.00	0.00	0.07	0.01	0.00	0.03	0.00	0.00	0.00	0.11
Batteries	0.15	2.99	0.43	0.00	0.82	0.48	0.53	2.73	0.65	0.33	0.01	0.03	9.16
Tires	2.07	0.32	1.38	2.89	1.55	3.25	0.90	0.58	1.69	3.59	0.69	1.33	20.23
White Goods/Assorted metals	3.25	2.27	3.78	8.14	9.09	5.61	2.14	2.42	3.31	6.28	3.31	4.89	54.29
HH Waste & Paint	0.03	0.22	0.31	0.00	0.21	0.02	0.23	0.16	0.08	0.13	0.00	0.00	1.37
Compost	0.00	0.00	13.17	0.74	10.56	13.90	8.16	4.97	2.72	8.52	0.00	0.00	62.74
Oil Filler/Oil Containers	0.00	0.00	0.01	0.32	0.83	0.40	0.00	0.08	0.04	0.00	0.00	0.00	1.68
Asbestos	0.00	0.00	0.00	0.00	0.00	77.30	27.41	28.02	46.76	21.03	0.00	0.00	200.52
Annular-bearers responsible for	0.06	0.08	0.04	0.01	0.06	0.03	0.01	0.00	0.10	0.1	0	0	0.49
Total to Designated Areas	6.35	10.37	56.04	24.91	46.27	113.32	82.30	46.47	90.52	55.71	21.67	17.90	543.83
Products Diverted for Recycle	5.61	8.62	18.64	15.43	25.05	19.28	12.82	13.26	9.45	19.86	7.70	6.16	167.08
2010 Monthly Total by Weight	734.73	763.56	1,004.16	1,014.78	1,143.41	1,363.60	1,390.74	1,295.05	1,207.48	1,194.06	970.16	867.46	12,935.14
2009 Monthly Total by Weight	893.65	815.94	943.08	974.86	1,531.73	1,266.24	1,274.90	1,143.22	1,288.22	1,228.68	892.40	798.45	13,081.64
2008 Monthly Total by Weight	877.33	982.24	1,077.40	1,049.53	1,802.21	1,427.88	1,311.93	1,522.26	1,322.21	2,356.70	1,174.06	835.79	15,739.54
Soil with Hydrocarbons	28.88	23.98	37.86	100.71	38.17	64.86	5296.59	4688.90	2615.74	47.64	23.59	36.47	12,992.27
DWRT	0	0	0	5.03	32.72	18.82	13.04	1.55	26.25	103.75	0	0	200.16

***Mackenzie Regional Waste Management Commission
Class IIB Landfill***

Monthly Operations Report and Summary

Month of January 2011

Reporting To:

Alberta Environmental and Protection

Attention: Mr. George Neurohr

10320 - 99th Street
Grande Prairie, Alberta
T8V 6J4

Phone: 780-538-5351

Mackenzie Regional Waste Management Commission
Monthly Operations Summary
Month of January 2011

1: Supervision and Operating Personnel

<u>Manager</u>	<u>Pat Sliworsky</u>	<u>MRWMC</u>
<u>Landfill Operator</u>	<u>Neville Pomeroy</u>	<u>MRWMC</u>
<u>Equipment Operator</u>	<u>Nels Lizotte</u>	<u>MRWMC</u>
<u>Administrative/Financial Assistant</u>	<u>Kathy Bancarz</u>	<u>MRWMC</u>

2: Load Inspections Inspections are conducted on a random basis throughout the month

3: Daily Activities Please find attached the Summary of Daily Activities and Information
Daily journal filed at the landfill office;
Scale cleaning
Sorting and hauling recycled metals and white goods

4: Operational Problems

Ravens
Customers placing waste at incorrect locations
Customers not covering & securing loads

5: Public Complaints

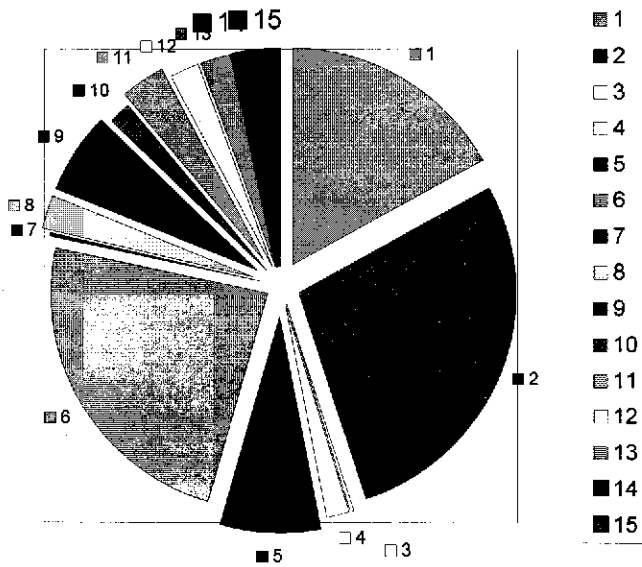
6: Special Activities Litter fences are moved to appropriate locations
White goods are being stored for future recycling off site
Metal is being stored for future recycling off site

Mackenzie Regional Waste Management Commission
Montly Reporting Summary
Month January 2011

Monitoring Parameters	Frequency	Method	Sampling Location	Reporting Method	Attachment of Action
Weight & type of waste received	Daily, per load	Landfill Weigh Scale	Landfill Entrance	Scale Record per load	Attached Waste Received Report
Weight & type of waste removed	Daily, per load	Landfill Weigh Scale	Landfill Entrance	Scale Record per load	Attachment #2 Load Summary
Hazardous waste detection	Daily, per load	Observation and load inspection	Landfill & Entrance and disposal storage sites	Operating Record	None observed this reporting
Location of waste deposited	Daily	Per survey record	Active portion of cell	Operating Record	Cell 3B
Cover Thickness	Daily	Observation	Active portion of cell	Operating Record	None, using dirt as daily cover
Working Face Width	Daily	Observation	Active portion of cell	Operating Record	75ft working face, monitored
Leachate level monitoring	Per operation plan	Measurement	Leachate storage pond or cell	Operating Record	Annual reporting
Leachate analysis	Per operation plan	Grab Sample	Leachate storage pond or cell	Operating Record	none
Volume of leachate removed	As removed	Measurement	Leachate storage pond or cell	Operating Record	none
Surface Monitoring	Surface water monitoring plan	Observation	Active portion of cell	Operating Record	Daily
Intermediate cover	When cover applied	Observation	Completion of cell	Operating Record	none
Final cover	Cell Closure	Survey cores and test pits	Completion of cell	Survey Record	none
Groundwater monitoring	Per GWP as amended	Measurement and grab sample	Groundwater monitoring wells	Operating Record	Annual reporting

Mackenzie Regional Landfill

Waste Received January 2011



Waste Volume Legend	Metric Tonne	% of Total	Legend
MD #23 Transfer Stations	130.32	17%	1
MD #23 Commercial - Industrial	212.54	28%	2
MD #23 Construction - Demolition	2.47	0%	3
MD #23 Farm Residential	13.72	2%	4
H L Residential	57.23	7%	5
H L Commercial-Industrial	182.17	24%	6
H L Construction-Demolition	2.84	0%	7
R L Residential	19.13	3%	8
R L Commercial-Industrial	45.81	6%	9
Dene Tha Residential	12.07	2%	10
Dene Tha Transfer	26.46	3%	11
Dene Tha Const./Demo.	16.58	2%	12
Paddle Transfer	17.34	2%	13
Non-Members	10.87	1%	14
Products to Designated Areas	14.66	2%	15
Total	764.21	100%	

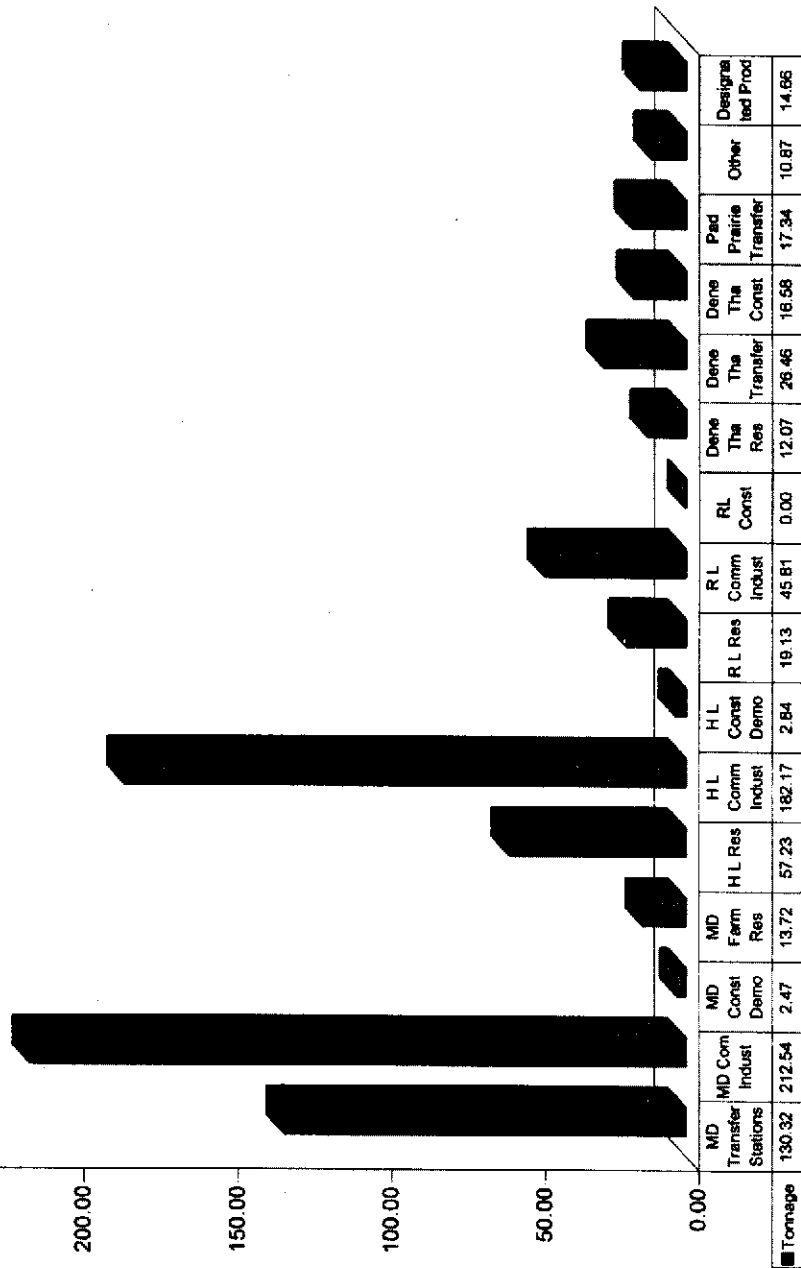
Items not included in chart

Soil with Hydrocarbons	28.88
DIRT	0.00

Landfill Accumulated Tonnage to January 31, 2011

250.00
200.00
150.00
100.00
50.00
0.00

Metric
Tonnes



Source of Waste

**Mackenzie Regional Waste Management Commission
Summary of Waste Received in 2011 - Sorted by Area - per Metric Tonne**

Mackenzie County	January	February	March	April	May	June	July	August	September	October	November	December	Total
Transfer Stations	130.32												130.32
Commercial - Industrial	212.54												212.54
Construction - Demolition	2.47												2.47
Farm Residential	13.72												13.72
Total Mackenzie County	359.05	0.00	0.00	0.00	0.00	0.00	0.00	0.00	0.00	0.00	0.00	0.00	359.05
Town of High Level													
Residential	57.23												57.23
Commercial - Industrial	182.17												182.17
Construction - Demolition	2.84												2.84
Total High Level	242.24	0.00	0.00	0.00	0.00	0.00	0.00	0.00	0.00	0.00	0.00	0.00	242.24
Town of Rainbow Lake													
Residential	19.13												19.13
Commercial - Industrial	45.81												45.81
Construction - Demolition	0.00												0.00
Total Rainbow Lake	64.94	0.00	0.00	0.00	0.00	0.00	0.00	0.00	0.00	0.00	0.00	0.00	64.94
Dene The First Nations													
Residential	12.07												12.07
Transfer Station	26.46												26.46
Construction - Demolition	16.58												16.58
Total Dene Tba	55.11	0.00	0.00	0.00	0.00	0.00	0.00	0.00	0.00	0.00	0.00	0.00	55.11
Paddle Prairie Metis Settlement													
Transfer Station	17.34												17.34
Total Paddle Prairie	17.34	0.00	0.00	0.00	0.00	0.00	0.00	0.00	0.00	0.00	0.00	0.00	17.34
Others													
Non-members	10.87												10.87
Total Others	10.87	0.00	0.00	0.00	0.00	0.00	0.00	0.00	0.00	0.00	0.00	0.00	10.87
Total Waste Deposited in Pit	749.66	0.00	0.00	0.00	0.00	0.00	0.00	0.00	0.00	0.00	0.00	0.00	749.66
Products to Designated Area													
E-waste, electronics	0.08												0.08
Liquid Sump	7.51												7.51
Wooden Burnable	3.06												3.06
Pesticide Containers	0.00												0.00
Batteries	0.00												0.00
Tires	1.30												1.30
White Goods/Assorted metals	2.54												2.54
HH Waste & Paint	0.05												0.05
Compost	0.00												0.00
Oil Filter/Oil Containers	0.03												0.03
Asbestos	0.00												0.00
Animal-haulers responsible for	0.09												0.09
Total to Designated Areas	14.66	0.00	0.00	0.00	0.00	0.00	0.00	0.00	0.00	0.00	0.00	0.00	14.66
Products Diverted for Recycle	3.85	0.00	0.00	0.00	0.00	0.00	0.00	0.00	0.00	0.00	0.00	0.00	3.85
2011 Monthly Total by Weight	764.21	0.00	0.00	0.00	0.00	0.00	0.00	0.00	0.00	0.00	0.00	0.00	764.21
2010 Monthly Total by Weight	734.73	783.35	1,004.15	1,014.76	1,143.41	1,353.60	1,390.74	1,295.05	1,207.48	1,194.06	870.15	867.46	12,938.14
2008 Monthly Total by Weight	893.65	815.94	943.06	974.85	1,531.73	1,296.24	1,274.90	1,143.22	1,288.22	1,228.99	892.40	798.45	15,739.54
Soil with Hydrocarbons	28.88	0	0	0	0	0	0	0	0	0	0	0	28.88
DIRT	0	0	0	0	0	0	0	0	0	0	0	0	0.00

MACKENZIE REGIONAL WASTE MANAGEMENT COMMISSION
REQUEST FOR DECISION

Issue:
Financial Report

Recommendation:

Adoption of the Financial Report.

Comments:

Date: March 12, 2011
Submitted By: Pat Sliworsky, Manager
Reviewed By: Kathy Bancarz, Administrative/Financial Assistant

**Mackenzie Regional Waste Management Commission
Comparative Balance Sheet
December 31, 2010**

	31-Dec-10	31-Dec-09
Assets		
Current Assets		
Chequing Account	372,384.48	142,674.36
Short Term Investments	537,674.15	437,674.15
Petty Cash	100.00	100.00
Undeposited Funds	8,956.93	21.28
Safety Program Funds	16.41	216.37
Total Cash	919,131.97	580,686.16
Accounts Receivable	91,627.85	107,226.13
Allowance For Doubtful Accounts	(631.64)	(641.02)
Accrued Return on Investments	0.00	1,931.00
Security Deposits	700.00	700.00
Total Receivables	91,696.21	109,216.11
Prepaid Insurance	1,654.68	1,904.27
Prepaid Employee Benefits	1,690.77	2,803.62
Prepaid Land Lease	407.45	407.47
Prepaid Promotion	80.00	80.00
Prepaid Membership Fees	335.96	254.63
Prepaid Conference Fees	0.00	0.00
Prepaid Telephone	94.70	214.70
Prepaid Rental Fees	0.00	239.99
Total Prepaid Assets	4,263.56	5,904.68
Inventory Assets, Composters	120.00	160.00
Total Current Assets	1,015,211.74	695,966.95
Long Term Investments		
Term Deposit Investments	520,463.59	520,463.59
Total Long Term Investments	520,463.59	520,463.59
Capital Assets		
Building Assets	294,653.74	294,653.74
Accumulated Amortization	(160,524.56)	(145,390.62)
Net - Building Assets	134,129.18	149,263.12
Engineering Structures	2,251,683.78	2,251,683.78
Accumulated Amortization	(1,597,591.65)	(1,517,910.36)
Net - Engineering Structures	654,092.13	733,773.42
Furniture and Equipment	73,619.96	73,619.96
Accumulated Amortization	(55,952.64)	(54,561.99)
Net - Furniture and Equipment	17,667.32	19,057.97
Machinery and Equipment	729,090.40	705,742.28
Accumulated Amortization	(189,855.40)	(143,660.47)
Net - Machinery and Equipment	539,235.00	562,081.81
Total Capital Assets	1,345,123.63	1,464,176.32

	31-Dec-10	31-Dec-09
TOTAL ASSETS	<u>2,880,798.96</u>	<u>2,680,606.86</u>
LIABILITIES		
Current Liabilities		
Accounts Payable	20,021.05	19,898.37
Accounts Payable - Other	547.39	547.39
Credit Card Payable	1,171.02	2,293.81
Current Portion of Long Term Debt	0.00	0.32
Accrued Audit Fees	0.00	14,000.00
Accrued Labour Expense	0.00	530.00
Accrued Payroll	5,669.66	6,646.13
Accrued Rental Fees	139.98	0.00
Accrued Utilities	298.39	439.66
Accrued WCB Premiums	0.00	0.00
EI Payable	0.00	(34.32)
CPP Payable	0.00	(204.05)
Income Tax Payable	0.00	0.00
AD&D	0.00	0.00
Dependent Life	0.00	0.00
Dental	0.00	0.00
Extended Health	0.00	0.00
Group Life	0.00	0.00
Long Term Disability	0.00	0.00
Short Term Disability	0.00	0.00
LAPP (ER) Payable	0.00	0.00
LAPP (EE) Payable	0.00	0.00
Workers Compensation Payable	0.00	0.00
Vacation Pay Payable	0.00	0.00
GST Charged on Sales	0.00	(0.01)
GST Paid on Purchases	(33.36)	0.00
GST Adjustments	0.00	0.00
ITC Adjustments	0.00	0.00
Total Current Liabilities	<u>27,814.13</u>	<u>44,117.30</u>
Long Term Liabilities		
Debenture Payable	284,633.79	318,541.00
Deferred Contributions - Cap. Asset	46,790.04	54,240.35
Landfill Reclamation - Funded	520,463.59	520,463.59
Landfill Reclamation - Unfunded	1,290,135.29	1,237,185.53
Total Long Term Liabilities	<u>2,142,022.71</u>	<u>2,130,430.47</u>
TOTAL LIABILITIES	<u>2,169,836.84</u>	<u>2,174,547.77</u>
EQUITY		
Equity		
Equity in Capital Assets	1,123,896.88	1,100,548.76
General Landfill Reserve	381,539.72	355,815.02
Total Equity	<u>1,505,436.60</u>	<u>1,456,363.78</u>
Unrestricted Net Assets		
Previous Year	(1,035,830.14)	(954,732.20)
Current	241,355.66	4,427.51

	31-Dec-10	31-Dec-09
Total Unrestricted Net Assets	(794,474.48)	(950,304.69)
TOTAL EQUITY	<u>710,962.12</u>	<u>506,059.09</u>
TOTAL LIABILITIES AND EQUITY	<u>2,880,798.96</u>	<u>2,680,606.86</u>

**Mackenzie Regional Waste Management Commission
Comparative Income Statement
For The Year Ended December 31, 2010**

6.2

	BUDGET 2010	ACTUAL 31-Dec-10	ACTUAL 31-Dec-09
REVENUE			
Tipping Fees			
County Transfer Stations	130,119.40	127,353.92	126,664.60
County Commercial/Industrial	145,669.14	144,155.89	143,952.54
County Construction/Demolition	2,122.23	6,030.21	1,743.44
County Farm Residential	5,971.79	13,107.82	7,240.31
Total County Revenue	283,882.56	290,647.84	279,600.89
High Level Residential	60,072.46	65,128.64	65,559.03
High Level Commercial/Industrial	145,868.47	132,830.27	149,679.09
High Level Construction/Demolition	22,858.81	15,833.71	20,641.62
Total High Level Revenue	228,799.74	213,792.62	235,879.74
Rainbow Lake Residential	16,132.15	14,768.69	16,129.53
Rainbow Lake Commercial/Industrial	39,163.96	35,135.69	38,663.76
Total Rainbow Lake Revenue	55,296.11	49,904.38	54,793.29
Dene Tha Residential	30,755.58	28,589.15	27,677.20
Dene Tha Construction/Demolition	15,328.60	41,730.65	12,658.75
Dene Tha Transfer Station	71,707.01	55,742.45	62,904.63
Total Dene Tha Revenue	117,791.19	126,062.25	103,240.58
Paddle Prairie Transfer Station	53,059.01	46,876.37	46,882.88
Non Members	20,717.14	49,445.50	22,415.06
Contaminated Soil	4,324.94	117,420.17	3,888.64
Total Tipping Fees	763,870.69	894,149.13	746,701.08
Other Revenue			
Funds From Reserve Account	48,600.00	36,452.63	0.00
Return on Long-term Investments	8,915.55	(1,931.00)	7,710.17
Interest Earned	805.21	1,035.94	51,462.62
Extra Work Charges	2,633.45	5,881.32	2,414.00
Batteries	1,878.55	1,138.00	1,722.00
Expense Reimbursements	9,243.89	17,391.03	6,531.15
STEP Program	2,450.00	0.00	2,450.00
WCB Dividends	349.87	0.00	0.00
Canada Summer Jobs	0.00	2,816.00	0.00
WCB PIR Refund	0.00	1,027.17	0.00
AAMDC Dividends	50.13	279.12	50.13
Deferred Capital Contributions	7,450.29	7,450.31	7,526.11
Composter Sales	146.78	73.39	146.78
E-Waste	4,263.71	5,087.25	3,908.40
Paint / HH Waste Recycling	2,078.56	2,864.40	2,358.80
Total Other Revenue	88,865.99	79,565.56	86,280.16
TOTAL REVENUE	852,736.68	973,714.69	832,981.24
EXPENSES			
Operating Expenses			
Administration & Service Fees	135.00	86.12	139.11
Advertising	1,200.00	1,054.30	1,791.98
Auditing Fees	15,500.00	0.00	14,994.50
Finning Maintenance / Labour	2,500.00	5,279.00	15,436.00
Flat Repairs	720.00	404.00	599.00

	Budget 2010	31-Dec-10	31-Dec-09
Oil Sampling	25.00	0.00	0.00
Steam Cleaning /Vehicle Wash	2,000.00	786.08	1,540.07
Vehicle Oil Changes	400.00	195.85	326.14
Welding Maintenance	8,000.00	1,281.32	2,216.30
Parts and Materials	10,000.00	6,317.87	12,419.86
Other Labour	1,500.00	3,450.78	4,122.50
Deisel (Dyed)	25,000.00	27,750.20	23,880.78
Gas	3,000.00	2,583.60	2,900.03
Oil, Grease & Anti-freeze	2,000.00	3,088.14	2,855.28
Building & Content Insurance	1,265.79	1,261.45	1,188.64
Equipment Insurance	1,144.64	855.56	713.00
Vehicle Insurance	237.62	214.66	234.36
General Liability Insurance	530.16	517.98	528.14
Contributed to Landfill Closure	52,949.70	52,949.76	50,243.81
Dry Cleaning	200.00	203.15	141.15
Land Lease Agreement	698.52	698.52	698.50
Legal Fees	105.00	101.72	102.22
Membership / Conf. Fees	1,000.00	1,564.42	1,231.75
Postage & Freight	2,500.00	1,648.13	2,484.75
Rental Fees	400.00	1,545.45	1,140.50
Survey for Annual Report	6,000.00	5,836.00	7,181.87
Coffee/Drinking Water Supplies	1,200.00	930.74	1,085.85
Janitorial Supplies	800.00	465.77	744.26
Office Supplies	2,800.00	4,086.46	4,015.25
Shop Supplies	1,500.00	1,222.94	1,240.38
Telephone & Communications	4,800.00	5,105.09	5,023.60
Tools Expense	400.00	45.25	463.80
Training and Education	1,000.00	75.00	2,981.20
Travel & Subsistance	7,000.00	4,406.65	9,878.20
Electrical	2,650.00	3,046.29	2,989.40
Heat	10,000.00	8,647.26	8,936.32
Water Tank Fills	1,560.00	1,544.00	1,578.50
Vehicle Lease	7,707.48	7,707.48	5,937.32
Total Operating Expenses	180,428.91	156,956.99	193,984.32
Payroll Expenses			
Wages and Salaries	274,611.54	274,888.71	296,769.60
Commission Members Per Diem	8,550.00	6,550.00	7,175.00
EI Expense	2,999.71	4,596.59	5,309.14
CPP Expense	10,892.82	9,208.85	10,757.52
WCB Expense	4,966.65	6,175.63	5,252.23
Employee Benefits	14,841.24	15,879.76	16,946.40
Pension Expense	22,596.87	24,208.62	24,753.63
Vacation Pay Expense	432.00	418.64	293.00
Total Payroll Expenses	339,890.83	341,926.80	367,256.52
Site Maintenance and Repair			
Building Repair	2,000.00	1,977.31	7,688.75
Ground Water	8,800.00	6,768.40	9,639.25
Leachate	6,000.00	4,169.75	6,431.75
Bin Rental	2,400.00	2,275.00	3,900.00
Recycling Expenses	9,019.91	9,513.03	26,377.40
Roads	3,200.00	2,693.00	8,894.24
Surface Water	250.00	216.15	229.75
Site Clean up	2,050.00	2,050.00	2,050.00
New Signs at the Landfill Entrance	300.00	382.00	522.97

	Budget 2010	31-Dec-10	31-Dec-09
Total Site Maintenance and Repair	34,019.91	30,044.64	65,734.11
Other Expenses			
Amortization/Depreciation	139,478.30	142,400.81	169,447.31
Bank & Collection Charges	0.00	36.37	53.35
Interest Expense	13,933.87	13,933.87	15,351.75
Uncollectible Accounts	100.00	428.21	0.00
Waste Hauling Study	0.00	24,677.63	13,094.10
Landfill Audit 2010	0.00	9,000.00	0.00
Composters Cost of Goods Sold	0.00	40.00	80.00
Promotion	0.00	0.00	2,757.52
Safety Awards	200.00	199.96	425.00
Soil Testing (Hydrocarbons)	0.00	12,713.75	369.75
Total Other Expenses	153,712.17	203,430.60	201,578.78
TOTAL EXPENSE	708,051.82	732,359.03	828,553.73
NET INCOME	144,684.86	241,355.66	4,427.51
Capital Expenditures			
Reclaim Monitoring Wells	0.00	0.00	8,000.00
New Demo/Const Cell	0.00	0.00	7,012.50
Final Drive - Track Loader	0.00	0.00	30,026.15
Left Front Housing - Backhoe	0.00	0.00	13,376.27
Load Cell for Scale	0.00	0.00	1,225.25
Deck by Office	0.00	0.00	3,300.00
Shop Insulation/Doors	0.00	0.00	30,723.00
Replace Track Links on Loader	0.00	0.00	26,672.03
Waste Hauling Study	0.00	0.00	19,000.00
816-F2 Compactor (over 10 years)	33,907.53	33,907.53	32,434.06
Master Plan Review (due in 2010)	3,000.00	3,000.00	3,000.00
Future Excavation of Cell 5 (over 10 yrs)	24,409.00	24,409.00	30,000.00
Landfill Audit (Due in 2010)	3,250.00	3,250.00	3,250.00
Building Reserve	8,648.33	8,648.33	0.00
Equipment Reserve	14,010.00	14,010.00	19,746.00
Electric Perimeter Fence	5,000.00	5,000.00	0.00
Freon Removal Equipment Reserves	300.00	300.00	0.00
Metal Recycling (over 2 years)	3,560.00	3,560.00	0.00
Cover on Cell 4	48,600.00	0.00	0.00
Muffler for Track Loader	0.00	1,950.51	0.00
Repair Radiator on Track Loader	0.00	3,926.43	0.00
Final Drive Seals on Track Loader	0.00	5,187.91	0.00
Freon Removal Equipment	0.00	2,775.00	0.00
Front Idler Track Loader	0.00	9,508.27	0.00
Total Capital Expenditures	144,684.86	119,432.98	227,765.26
Net Income - Capital Expenditures	0.00	121,922.68	(223,337.75)

Mackenzie Regional Waste Management Commission
Comparative Balance Sheet
January 31, 2011

6.2

	31-Jan-11	31-Jan-10
Assets		
Current Assets		
Chequing Account	263,638.01	168,573.05
Short Term Investments	663,026.35	437,674.15
Petty Cash	100.00	100.00
Undeposited Funds	9,166.82	0.00
Safety Program Funds	16.41	216.37
Total Cash	935,947.59	606,563.57
Accounts Receivable	106,504.36	78,805.94
Allowance For Doubtful Accounts	(631.64)	(641.02)
Accrued Return on Investments	0.00	0.00
Security Deposits	700.00	700.00
Total Receivables	106,572.72	78,864.92
Prepaid Insurance	1,421.03	1,664.10
Prepaid Land Lease	349.24	349.26
Prepaid Promotion	80.00	80.00
Prepaid Membership Fees	332.25	220.80
Prepaid Conference Fees	0.00	695.00
Prepaid Telephone	94.70	199.70
Prepaid Rental Fees	0.00	208.32
Total Prepaid Assets	2,277.22	3,417.18
Inventory Assets, Composters	80.00	160.00
Total Current Assets	1,044,877.53	689,005.67
Long Term Investments		
Term Deposit Investments	556,853.05	520,463.59
Total Long Term Investments	556,853.05	520,463.59
Capital Assets		
Building Assets	294,653.74	294,653.74
Accumulated Amortization	(161,785.72)	(146,651.78)
Net - Building Assets	132,868.02	148,001.96
Engineering Structures	2,251,683.78	2,251,683.78
Accumulated Amortization	(1,604,231.76)	(1,524,550.47)
Net - Engineering Structures	647,452.02	727,133.31
Furniture and Equipment	75,291.94	73,619.96
Accumulated Amortization	(56,089.73)	(54,677.88)
Net - Furniture and Equipment	19,202.21	18,942.08
Machinery and Equipment	729,090.40	707,692.79
Accumulated Amortization	(193,704.98)	(147,299.01)
Net - Machinery and Equipment	535,385.42	560,393.78
Total Capital Assets	1,334,907.67	1,454,471.13
TOTAL ASSETS	2,936,638.25	2,663,940.39

	31-Jan-11	31-Jan-10
LIABILITIES		
Current Liabilities		
Accounts Payable	10,786.76	24,228.61
Accounts Payable - Other	547.39	547.39
Credit Card Payable	455.36	1,020.04
Current Portion of Long Term Debt	35,447.93	33,907.53
Accrued Audit Fees	14,500.00	14,000.00
Accrued Bin Rental	0.00	0.00
Accrued Payroll	6,332.20	8,646.93
Accrued Rental Fees	171.64	0.00
Accrued Utilities	315.78	351.69
Accrued WCB Premiums	0.00	445.91
EI Payable	0.00	(31.68)
CPP Payable	0.00	(169.25)
Income Tax Payable	0.00	0.00
AD&D	0.00	0.00
Dependent Life	0.00	0.00
Dental	0.00	0.00
Extended Health	0.00	0.00
Group Life	0.00	0.00
Long Term Disability	0.00	0.00
Short Term Disability	0.00	0.00
LAPP (ER) Payable	(48.92)	0.00
LAPP (EE) Payable	(43.52)	0.00
Workers Compensation Payable	0.00	0.00
Vacation Pay Payable	0.00	66.27
GST Charged on Sales	1,954.88	1,853.65
GST Paid on Purchases	(510.40)	(1,023.31)
GST Adjustments	0.00	0.00
ITC Adjustments	0.00	0.00
Total Current Liabilities	69,909.10	83,843.78
Long Term Liabilities		
Debtore Payable	249,185.86	284,633.79
Deferred Contributions - Cap. Asset	46,169.18	53,619.49
Landfill Reclamation - Funded	520,463.59	520,463.59
Landfill Reclamation - Unfunded	1,294,786.24	1,241,598.01
Total Long Term Liabilities	2,110,604.87	2,100,314.88
TOTAL LIABILITIES	2,180,513.97	2,184,158.66
EQUITY		
Equity		
Equity in Capital Assets	1,013,702.88	1,100,548.76
General Landfill Reserve	394,633.35	355,815.02
Total Equity	1,408,336.23	1,456,363.78
Unrestricted Net Assets		
Previous Year	(650,092.45)	(950,304.69)
Current	(2,119.50)	(26,277.36)
Total Unrestricted Net Assets	(652,211.95)	(976,582.05)
TOTAL EQUITY	756,124.28	479,781.73

	31-Jan-10	31-Jan-10
TOTAL LIABILITIES AND EQUITY	<u>2,936,638.25</u>	<u>2,663,940.39</u>

**Mackenzie Regional Waste Management Commission
Comparative Income Statement
For Month Ended January 31, 2011**

6.2

REVENUE	BUDGET 2011	ACTUAL 31-Jan-11	ACTUAL 31-Jan-10
Tipping Fees			
County Transfer Stations	129,358.95	6,418.14	7,479.67
County Commercial/Industrial	139,058.35	10,467.80	9,592.96
County Construction/Demolition	6,765.51	121.65	0.00
County Farm Residential	11,794.56	744.67	355.78
Total County Revenue	286,977.37	17,752.26	17,428.41
High Level Residential	68,419.77	3,242.60	3,431.19
High Level Commercial/Industrial	132,568.88	9,323.99	8,876.88
High Level Construction/Demolition	18,821.75	140.93	447.69
Total High Level Revenue	219,810.40	12,707.52	12,755.76
Rainbow Lake Residential	14,300.81	942.16	900.29
Rainbow Lake Commercial/Industrial	34,110.00	2,256.14	2,393.07
Total Rainbow Lake Revenue	48,410.81	3,198.30	3,293.36
Dene Tha Residential	28,520.03	1,699.60	1,772.50
Dene Tha Construction/Demolition	19,554.38	2,321.20	121.25
Dene Tha Transfer Station	57,679.94	3,705.10	3,126.25
Total Dene Tha Revenue	105,754.35	7,725.90	5,020.00
Paddle Prairie Transfer Station	44,192.66	2,427.04	2,621.25
Non Members	25,000.00	1,521.80	487.50
Contaminated Soil	5,000.00	348.75	231.04
Total Tipping Fees	735,145.59	45,681.57	41,837.32
Other Revenue			
Funds From Reserve Account	48,600.00	0.00	0.00
Return on Long-term Investments	3,310.29	0.00	(1,931.00)
Interest Earned	366.62	282.39	14.80
Extra Work Charges	4,746.48	207.00	0.00
Batteries	1,200.00	240.00	0.00
Expense Reimbursements	7,070.00	363.25	81.50
STEP Program	2,450.00	0.00	0.00
WCB Dividends	0.00	0.00	0.00
WCB PIR Refund	1,027.17	0.00	0.00
AAMDC Dividends	279.12	0.00	0.00
Deferred Capital Contributions	7,450.29	620.86	620.86
Composter Sales	73.39	73.39	0.00
E-Waste	3,847.80	256.50	263.50
Paint / HH Waste Recycling	1,735.75	669.25	0.00
Surplus Transfer	44,575.44	0.00	0.00
Total Other Revenue	126,732.35	2,712.64	(950.34)
TOTAL REVENUE	861,877.94	48,394.21	40,886.98
EXPENSES			
Operating Expenses			
Administration & Service Fees	110.00	2.00	0.00
Advertising	1,000.00	29.90	85.64
Auditing Fees	16,000.00	0.00	0.00
Finning Maintenance / Labour	3,500.00	0.00	0.00
Flat Repairs	500.00	0.00	85.00

	Budget 2011	31-Jan-11	31-Jan-10
Oil Sampling	25.00	0.00	0.00
Steam Cleaning /Vehicle Wash	1,125.00	12.00	0.00
Vehicle Oil Changes	400.00	60.45	0.00
Welding Maintenance	8,000.00	407.26	0.00
Parts and Materials	10,000.00	1,415.92	433.12
Other Labour	1,500.00	0.00	0.00
Deisel (Dyed)	25,000.00	3,245.96	910.93
Gas	3,000.00	140.05	171.20
Oil, Grease & Anti-freeze	4,000.00	16.20	407.96
Building & Content Insurance	1,276.63	103.33	106.91
Equipment Insurance	860.91	70.66	71.92
Vehicle Insurance	218.00	16.50	18.17
General Liability Insurance	518.02	43.16	43.17
Contributed to Landfill Closure	55,811.29	4,650.95	4,412.48
Dry Cleaning	310.00	0.00	0.00
Land Lease Agreement	698.52	58.21	58.21
Legal Fees	105.00	0.00	0.00
Membership / Conf. Fees	1,200.00	48.71	78.83
Postage & Freight	2,000.00	86.49	127.20
Rental Fees	400.00	31.66	31.67
Survey for Annual Report	6,000.00	0.00	5,836.00
Coffee/Drinking Water Supplies	1,000.00	139.99	302.01
Janitorial Supplies	500.00	67.12	78.14
Office Supplies	4,000.00	437.01	596.92
Shop Supplies	1,000.00	175.37	24.10
Telephone & Communications	5,200.00	354.40	273.89
Tools Expense	400.00	0.00	0.00
Training and Education	1,000.00	0.00	0.00
Travel & Subsistance	7,000.00	0.00	337.50
Electrical	3,100.00	315.78	291.71
Heat	5,433.00	0.00	2,716.50
Water Tank Fills	1,700.00	70.50	141.00
Vehicle Lease	7,707.48	642.29	642.29
Total Operating Expenses	181,598.85	12,641.87	18,282.47
Payroll Expenses			
Wages and Salaries	282,857.23	20,993.10	25,723.99
Commission Members Per Diem	9,300.00	0.00	950.00
EI Expense	4,044.48	482.64	526.05
CPP Expense	7,626.84	905.37	1,008.44
WCB Expense	6,474.00	0.00	445.91
Employee Benefits	16,319.52	1,067.61	1,906.15
Pension Expense	25,870.18	2,091.92	2,231.86
Vacation Pay Expense	432.00	0.00	66.27
Total Payroll Expenses	352,924.25	25,540.64	32,858.67
Site Maintenance and Repair			
Building Repair	2,000.00	0.00	0.00
Ground Water	7,110.00	0.00	0.00
Leachate	5,000.00	0.00	0.00
Bin Rental	2,400.00	0.00	0.00
Recycling Expenses	9,000.00	0.00	120.00
Roads	3,200.00	0.00	0.00
Surface Water	230.00	0.00	0.00
Site Clean up	2,050.00	0.00	0.00
Signs	300.00	0.00	170.00

	Budget 2011	31-Jan-11	31-Jan-10
Total Site Maintenance and Repair	31,290.00	0.00	290.00
Other Expenses			
Amortization/Depreciation	142,400.73	11,887.94	11,655.70
Bank & Collection Charges	25.00	0.01	0.00
Interest Expense	10,732.85	0.00	0.00
Uncollectible Accounts	100.00	0.00	0.00
Waste Hauling Study	0.00	0.00	4,077.50
Composters Cost of Goods Sold	0.00	80.00	0.00
Promotion	0.00	0.00	0.00
Safety Awards	400.00	0.00	0.00
Soil Testing (Hydrocarbons)	0.00	363.25	0.00
Total Other Expenses	153,658.58	12,331.20	15,733.20
TOTAL EXPENSE	719,471.68	50,513.71	67,164.34
NET INCOME	142,406.26	(2,119.50)	(26,277.36)
Capital Expenditures			
816-F2 Compactor (over 10 years)	35,447.93	0.00	0.00
Master Plan Review (due in 2010)	0.00	0.00	0.00
Future Excavation of Cell 5 (over 10 yrs)	25,000.00	0.00	0.00
Landfill Audit (Due in 2013)	3,000.00	0.00	0.00
Building Reserve	8,648.33	0.00	0.00
Equipment Reserve	14,010.00	0.00	0.00
Electric Perimeter Fence	5,000.00	0.00	0.00
Freon Removal Equipment Reserves	300.00	0.00	0.00
Metal Recycling (over 2 years)	0.00	0.00	0.00
Cover on Cell 4	48,600.00	0.00	0.00
Computer & Printer	1,600.00	871.98	0.00
Generator	800.00	800.00	0.00
Muffler for Track Loader	0.00	0.00	1,950.51
Repair Radiator on Track Loader	0.00	0.00	0.00
Final Drive Seals on Track Loader	0.00	0.00	0.00
Freon Removal Equipment	0.00	0.00	0.00
Front Idler Track Loader	0.00	0.00	0.00
Total Capital Expenditures	142,406.26	1,671.98	1,950.51
Net Income - Capital Expenditures	0.00	(3,791.48)	(28,227.87)

MACKENZIE REGIONAL WASTE MANAGEMENT COMMISSION
REQUEST FOR DECISION

Issue:
General Landfill Reserve

Recommendation:
THAT the Commission accept the changes to the General Landfill Reserve as recommended by the Manager.

Comments:

Date: March 12, 2011
Submitted By: Pat Sliworsky, Manager
Reviewed By: Kathy Bancarz, Administrative/Financial Assistant

MACKENZIE REGIONAL WASTE MANAGEMENT COMMISSION
REQUEST FOR DECISION

Issue:
Minutes of November 20, 2010

Recommendation:
Adoption of the minutes.

Comments:

Date: March 12, 2011
Submitted By: Pat Sliworsky, Manager
Reviewed By: Kathy Bancarz, Administrative/Financial Assistant



Mackenzie Regional Waste Management Commission

Annual Meeting
Stardust, Olivier Room
10:00 a.m.
November 20, 2010

MINUTES

In Attendance	Peter Braun John Driedger Barry Gladders Rod Chalifoux	Mackenzie County Mackenzie County Town of High Level Town of High Level
Staff:	Pat Sliworsky Kathy Bancarz	Manager Administrative/Financial Assistant
Regrets:	Rose Cretney Gordon Ross	Town of Rainbow Lake Town of Rainbow Lake

1. CALL TO ORDER

1.1 Election of Chairman and Vice Chairman

Manager Pat Sliworsky called the meeting to order at 10:02 a.m.

Position of Chairman

Peter Braun nominated Barry Gladders, who declined
Barry Gladders nominated Rod Chalifoux, who declined
Rod Chalifoux nominated John Driedger, who declined
John Driedger nominated Peter Braun, who accepted

Peter Braun was acclaimed as Chairman.

Position of Vice Chairman

Rod Chalifoux nominated Barry Gladders, who accepted

Call for other nominations
Third and Final call for nominations

Barry Gladders was acclaimed as Vice Chairman

1.2 Per Diems Review

Resolution #70-10

Moved by John Driedger
THAT the Board accept the Per Diems as presented.

.CARRIED

2. ADDITIONS TO OR DELETIONS FROM THE AGENDA

There were none.

3. ADOPTION OF AGENDA

Resolution #71-10

Moved by Rod Chalifoux

THAT the agenda for the November 20, 2010 annual meeting be adopted as presented.

CARRIED

4. DELEGATIONS

**4.1 Richard Donaldson,
Auditor**

Richard Donaldson presented the Audit Service Plan for the 2010 financial audit.

Resolution #72-10

Moved by John Driedger

THAT the Audit Service Plan be accepted for information.

CARRIED

5. REPORTS

5.1 Manager's Report

Manager Pat Sliworsky updated the Board on the current happenings.

Resolution #73-10

Moved by Barry Gladders

THAT the Manager's Report be accepted for information.

CARRIED

5.2 Financial Report

Resolution #74-10

Moved by John Driedger

THAT the Financial Report be accepted for information.

CARRIED

6. ADOPTION OF MINUTES

**6.1 Minutes of September
18 and October 15,
2010**

Resolution #75-10

Moved by Barry Gladders

THAT the minutes of the September 18, 2010 Mackenzie Regional Waste Management Commission Regular Meeting and the minutes of the October 15, 2010 Budget Meeting be adopted as presented.

CARRIED

7. BUSINESS ARISING FROM THE MINUTES

There were none.

8. NEW BUSINESS

**8.1 Confidentiality Policy
46-06**

Resolution #76-10

Moved by Rod Chalifoux

THAT the Commission accept the addition to the Confidentiality Policy as recommended by the Manager.

CARRIED

9. CORRESPONDENCE

9.1 Waste Study

Resolution #77-10

Moved by Barry Gladders

THAT the Commission hold an orientation at the next Regular Meeting.

CARRIED

Resolution #78-10

Moved by Barry Gladders

THAT the Board instruct Administration to make a comparison of Commissions to other Commissions.

CARRIED

Resolution #79-10

Moved by John Driedger

THAT the Board instruct Administration to research the capital costs of constructing a new landfill.

CARRIED

10. NOTICE OF MOTION

There were none.

11. NEXT MEETING DATE

12. IN-CAMERA ITEMS

There were none.

13. ADJOURNMENT

Resolution #80-10

Moved by Rod Chalifoux

THAT the meeting be adjourned at 11:22 a.m.

CARRIED

Mackenzie Regional Waste Management Commission
Minutes of November 20, 2010

Chairman

Manager

MACKENZIE REGIONAL WASTE MANAGEMENT COMMISSION
REQUEST FOR DECISION

Issue: Uncollectible Accounts for Write off December 31, 2010

Recommendation:

THAT the Board approve writing-off the Hammer Down Construction, High Class Painting, Western Construction, and Winks High Level accounts and give A&J Fencing and NDEH Ltd. Partnership until the end of March before sending them to collections.

Comments:

Any amounts collected from these accounts will be credited to the account. The amount budgeted for 'Uncollectable Accounts' in 2010 was \$100.00.

The write-off amount recommended = \$710.10.

Of this amount, \$617.45 is from one of the companies that have filed for bankruptcy.

Date:	March 12, 2011
Submitted By:	Pat Sliworsky, Manager
Reviewed By:	Kathy Bancarz, Administrative/Financial Assistant

MACKENZIE REGIONAL WASTE MANAGEMENT COMMISSION POLICY

	Policy No.: 50-06
Facility: Mackenzie Regional Landfill	Effective Date: January 20, 2007
Policy Title: COLLECTION OF UNPAID ACCOUNTS	Page 1 of 1

PURPOSE:

To provide for the timely and orderly collection of unpaid accounts at the Mackenzie Regional Landfill.

POLICY:

1. Payment on account is 30 days from the date of the invoice.
2. The Manager shall maintain a list of accounts unpaid after 90 days at the Landfill site, and deny access until the account is paid in full.
3. The collection procedures shall include:
 - Monthly statements
 - Phone calls requesting payment
 - Referral to Collection Agency
4. Uncollectible accounts shall be referred to the Commission annually for writing off.

RESPONSIBILITIES:

1. The Manager is responsible for the collection of unpaid accounts, and any referrals to a collection agency.
2. The Board will be responsible to review the policy.

	DATE	RESOLUTION
Approved	January 20, 2007	11-07
Amended	April 4, 2009	24-09
Amended		

**MACKENZIE REGIONAL WASTE MANAGEMENT COMMISSION
REQUEST FOR DECISION**

Item # _____

Issue:

07-01 Call Out Directive

Recommendation:

THAT the Commission accept the change to the 07-01 Call Out Directive.

Comments:

There needs to be an adjustment to the rate set to use for Call Outs as outlined in the Hours of Operation Policy. That rate needs to be adjusted to \$90.00/hour.

Date: March 12, 2011**Submitted By:** Pat Sliworsky, Manager**Reviewed By:** Kathy Bancarz, Administrative/Financial Assistant

Mackenzie Regional Waste Management Commission Administrative Directive #01-07

Title: Call Out Fee

Authority: Manager

Policy Related to: Hours of Operation Policy

Old Procedure No.: none

Approved: January 20, 2007

Purpose:

To provide an amount to charge for a Call out as per the policy. The Commission needs to recover the costs of having an operator open the Mackenzie Regional Landfill for access to the site when the site is closed as per Hours of Operation Policy section 3.

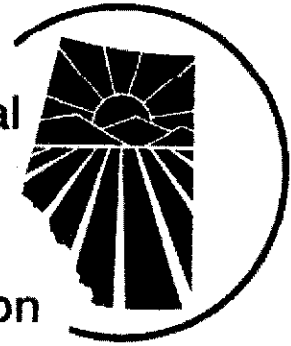
Directive:

1. The Commission will charge Call outs at a rate of \$40.00/hour. Amended April 4, 2009
2. The fee will be reviewed annually to ensure it recovers all costs for the operator to open the site.

	DATE	RESOLUTION NO
Approved	January 20, 2007	13-07
Amended	April 4, 2009	25-09
Amended		

(PAT SLIWORSKY)
Manager

Alberta
Municipal
Health
&
Safety
Association



December 9, 2010

Erica Deveaux
Mackenzie Regional Waste Management Commission
PO Box 235
High Level, AB T0H 1Z0

160 2833 Broadmoor Boulevard
Sherwood Park, AB T8H 2H3

phone: 780 417 3900
fax: 780 417 3940
toll free: 1 800 267 9764
email: safety@amhsa.net
web: www.amhsa.net

Subject: SECOR Self - Audit - Quality Assurance Review

Dear Erica,

Thank you for conducting the self - audit on the Mackenzie Regional Waste Management Commission. AMHSA has completed the quality assurance review - you've successfully met the current standards (please see copy attached). This review process was mandated by the provincial government to ensure effective quality control for the Partners in Injury Reduction / Certificate of Recognition audits.

Congratulations on maintaining your Small Employer Certificate of Recognition!

If you have questions about the review of your audit, please contact me.

Yours truly,

Susanne L'Heureux
COR/Training Coordinator

Encl



Regional Services

Northern Region

2nd Floor Provincial Building
10106 100 Avenue
High Level AB. T0H 1Z0

Telephone: (780) 926-5263

Fax: (780) 926-3950

November 24, 2010

Mr. Pat Silworsky
Mackenzie Regional Waste
Management Commission
Box 235
High Level, AB.
T0H 1Z0

Dear Mr. Silworsky,

Re: Mackenzie Regional Waste Management Facility – Approval 73493-01-01

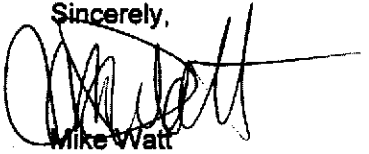
This letter is a follow-up to an inspection of the Mackenzie Regional Waste Management Facility conducted on September 15th, 2010. The landfill was inspected to assess compliance with approval 73493-01-01. Overall the facility was found to be in compliance with the approval conditions under review.

Some concerns were identified:

- The Landfill perimeter fence has not been electrified. Local Fish & Wildlife have expressed concerns regarding the number of bears and other wildlife frequenting the facility. Please provide an update on the fence electrification project including timelines for completion.
- The Surface Water Management Plan has not been fully implemented. Please provide an update on the status of the SWMP and include any upcoming work and timelines.
- Groundwater monitoring well 458W was abandoned on November 10, 2009. Please confirm if this well has been reclaimed or timelines for reclamation.

Please provide the requested information, in writing by December 31, 2010. Please contact me should you have any question or concerns.

Sincerely,

A handwritten signature in black ink, appearing to read "Mike Watt", with a long horizontal line extending to the right.

Mike Watt
Environmental Protection Officer
Northern Region

Cc. Greg Smith, District Compliance Manager

Mackenzie Regional Waste Management Commission

Box 235, High Level, AB, T0H 1Z0
Phone No. (780) 926-2958 Fax No. (780) 841-0152



November 27, 2010

Mr. Mike Watt
Alberta Environment
2nd Floor, Provincial Building
10106-100 Avenue
High Level, AB T0H 1Z0



Dear Mr. Watt,

This letter is in response to the concerns you addressed in your letter dated November 24, 2010.

- 1) Landfill perimeter fence has not been electrified. As mentioned at the time of inspection, the Commission has planned to set up an electric fence dating back to 2006. At that time AENV had approved grant money to cover 75% of the cost of this project with the Commission coming up with the rest of the cost. As you know AENV never came through with this grant. The Commission has been putting money in a reserve each year to build it up until such a time we are able to find a contractor willing and able to place such a fence up within our reserved amount. I will be trying again this next year to find a contractor who can do this project at a cost the Commission can afford to pay.
- 2) Surface Water Management Plan has not been fully implemented. Once again this project had been approved by AENV for a grant to cover 75% of the cost for this project and no money was ever received. As a result, even though the Commission has budgeted the 25% necessary for this project, the Commission cannot begin to fund such an expensive project without the financial aid of the Waste Management Assistance Program set up by the Alberta Government. Concerns were raised by the Commission on January 30, 2008 with a letter sent to the Environment Minister (see attached). A letter of response was sent back on February 22, 2008 (see attached). An e-mail from Mr. George Neurohr, M.Eng. P.Eng. Regional Municipal Engineer, Approvals and Waste Management AENV - Northern Region - Grande Prairie, regarding the subject on February 14, 2008 (see attached). During said conversation stated in the e-mail, Mr. Neurohr assured me that the



existing South Surface Water Collection Pond would suffice for the Surface Water Management Plan until such a time the Mackenzie Landfill expanded beyond the existing fenced in area. Mr. Neurohr has not been to the site to review this matter, so it was my understanding that what was in place was in compliance of the approval.

- 3) Reclamation of groundwater monitoring well 458W, November 10, 2009. A copy of this report was included in the 2009 Annual Groundwater Monitoring Program report, I have included this copy (see attached).

I trust this should answer all of your concerns. Should you have any further inquiries, please feel free to contact me.

Sincerely,

Pat Sliworsky
Manager

Cc. Mackenzie Regional Waste Management Commission Board